

**POONA CANCER REGISTRY
DIVISION OF
THE MUMBAI CANCER REGISTRY**

**CANCER
INCIDENCE AND MORTALITY
IN
POONA CITY
2001-2005**

**INDIAN CANCER SOCIETY
MUMBAI, INDIA.
2008**

POONA CANCER REGISTRY
DIVISION OF
THE BOMBAY CANCER REGISTRY

**CANCER
INCIDENCE AND MORTALITY
IN
POONA CITY
2001-2005**

A.P.Kurkure

Hon Secretary & Managing Trustee
Indian Cancer Society, Mumbai.

B.B.Yeole

Director
Mumbai Cancer Registry
Indian Cancer Society
Mumbai, India.

J.K.Joshi (Upto 31-10-2005)

Hon Secretary,
Poona Cancer Registry

S.S.Jawadekar (From 1-11-2005)

Hon Secretary,
Poona Cancer Registry
Poona

S.S.Koyande

Asst. Computer Programmer
Mumbai cancer Registry
Indian Cancer Society
Mumbai, India

K.C.Jadhav

Research Assistant
Mumbai Cancer Registry
Indian Cancer Society
Mumbai, India.

R.P.Vagal

Graduate Assistant
Mumbai Cancer Registry
Indian Cancer Society
Mumbai, India.

Acknowledgements

The Poona Cancer Registry Division of the Mumbai Cancer Registry became operative in January 1972 as a collaborative effort with the B.J. Medical College, Poona. The staff members of the department of Preventive and Social Medicine at the medical college were entrusted with the day-to-day work relating to the registry.

This publication is the eighth issue in the series "Cancer Morbidity and Mortality in the Poona City Agglomeration" and is based on all new cancer cases diagnosed in the resident population of Poona City during the 5-year period, 1st January 2001 to 31st December 2005.

We are grateful to the administration and staff members of various hospitals and consultants in private practice in Poona and Mumbai, without whose cooperation our efforts to register all the resident cancer cases in Poona, would not have succeeded. The executive Health Officer of the Poona Municipal Corporation deserves the special mention and we sincerely thank him, for making the death records of the city population freely available to us. We also wish to thank the Director of Census Operations of the Maharashtra State, for supplying us with the population breakdown according to age, sex and religion for Poona city. We are indebted to the Dean of the Sassoon Hospital, Poona, for permitting us to examine the medical records of the hospital and providing adequate office space for our staff members.

Dr.A.P.Kurkure

Dr.B.B.Yeole

STAFF OF POONA CANCER REGISTRY
(As on 1.03.2007)

Medical Social Investigators

Mrs. V.C.Pusalkar (Upto 30th Nov'04)
B.A.,D.Sw.

Miss.P.J.Joshi (1st Dec'04 - 31st Jan'07)
M.Sw

Mrs.N.S.Shaikh
M.Sw

Research Assistant

Mrs. V.V.Jahagirdar
B.A.

Contents

No	Name	Page
1	Introduction	7
2	Demographic Characteristics of Poona City Agglomeration	7
3	Population Estimates	8
4	Cancer Registration System	8
5	Working of the Registry	9
6	Sources of Data	10
7	Cancer Incidence Reporting System	10
8	Results	10
	Site	11
	Age	11
	Method of Diagnosis	15
	Religion	16
	Histology	18
9	Mortality	18
10	Publications	43

List of Tables

No	Name	Page
1	Estimated resident population by age and sex, as on 1 st January 2003 (Mid point of the period 2001-2005), Poona City Agglomeration, Total Population (All religious community)	23
2.	Estimated Resident population by religion and sex, as on 1 st January 2003 (Mid point of the period 2001-2005), Poona City Agglomeration	23
3	Incident cases of cancer by source and year of registration, with percentages, Males, Poona City Agglomeration, 2001-2005	24
4	Incident cases of cancer by source and year of registration, with percentages, Females, Poona City Agglomeration, 2001-2005	24
5	Number of Incident cases of cancer by site group (ICD-10) and year of registration with percentages, Poona City Agglomeration, Male, 2001-2005	25
6	Number of Incident cases of cancer by site group (ICD-10) and year of registration with percentages, Poona City Agglomeration, Female, 2001-2005	25
7	Number of Incident cases of cancer by site (ICD-10) and age with percentages, Poona City Agglomeration, Male, 2001-2005.	26
8	Number of Incident cases of cancer by site (ICD-10) and age with percentages, Poona City Agglomeration, Female, 2001-2005.	27
9	Average Annual age-specific, World age-adjusted and truncated (35-64 years) incidence rates of newly diagnosed cancer cases per 100,000 persons Poona City Agglomeration, Male, 2001-2005.	28
10	Average Annual age-specific, World age-adjusted and truncated (35-64 years) incidence rates of newly diagnosed cancer cases per 100,000 persons Poona City Agglomeration, Female, 2001-2005.	29
11	Incident cases of cancer by site (ICD-10) and Method of Diagnosis with percentages, Poona City Agglomeration, Male, 2001-2005.	30
12	Incident cases of cancer by site (ICD-10) and Method of Diagnosis with percentages, Poona City Agglomeration, Female, 2001-2005.	31
13	Incident cases of cancer by site (ICD-10) and Religion with percentages, Poona City Agglomeration, Male, 2001-2005.	32
14	Incident cases of cancer by site (ICD-10) and Religion with percentages, Poona City Agglomeration, Female, 2001-2005.	33
15	Number of Histologically proved incident cases of histology and sex with percentages, Poona City Agglomeration, 2001-2005.	34
16	Number of Histologically proved Incident cases of Cancer by Site group and Sex with Percentages, Poona City, 2001-05.	35
17	Number of cancer deaths by age and site (ICD-10), with percentages (Death in Period), Male, Poona City Agglomeration, 2001-2005.	39
18	Number of cancer deaths by age and site (ICD-10), with percentages (Death in Period), Female, Poona City Agglomeration, 2001-2005.	40
19	Age-specific, world age-adjusted and truncated (35-64 years) death rate per 100,000 persons, Male, Poona City Agglomeration, 2001-2005.	41
20	Age-specific, world age-adjusted and truncated (35-64 years) death rate per 100,000 persons, Female, Poona City Agglomeration, 2001-2005.	42

Introduction

This is the eighth publication in the series “Cancer Morbidity and Mortality in Poona City Agglomeration”. In this publication the new cancer cases diagnosed among the residents of Poona City Agglomeration during the period, 2001-2005 are analyzed and presented.

Demographic Characteristics of Poona City Agglomeration

Poona is one of the important district of Maharashtra State which lies on a plateau between latitude 17⁰54’ and 19⁰22’ North, and longitude 70⁰24’ and 75⁰14’ East. It has a dry and invigorating climate due to its altitude (500 meters above sea level) and the prevalence of westerly breezes. Its soil is free from alluvial deposits. The lowest temperature reached, is 5⁰C during January and February while the maximum goes up to 35⁰C in May. The main precipitation occurs during the southwest monsoon, which begins by the middle of June and extends up to the middle of October. The average annual rainfall is approximately 900mms. Poona receives its water supply from ‘Khadakwasla’, a storage dam nearby.

The area and population by sex, for each town in the Poona City Agglomeration by 2001 census is presented in Table A. The Poona district covers an area of approximately 15,643 sq.kms. It supports a population of 5.51 millions, which gives a density of 352 persons per sq.kms. Of these, 2.80 million (about 50.9%) reside in urban areas. Of the total urban spread, Poona City Agglomeration alone covers 344.18 sq.kms. having a population of 3.55 millions (2001 census). The agglomeration comprises Poona City, the Pimpri Chinchwad area, the Poona Cantonment, the Kirkee Cantonment, the Dehu Road Cantonment, Hadapsar, Lohagaon, Khadakwasala and Dehu.

Poona City has a historic past, as it was the capital in the Post-Moghul era of the Maratha Kingdom of Shivaji and the Peshwas. It is renowned for its educational facilities, since the early part of the 20th century. It is also the administrative head quarters of the district. Medical and educational facilities are available in ample measure, and many important industries have been established around this region, since 1950s.

Name of Town	Area in Kms	Population		
		Male	Female	Total
Poona City	138.76	1321338	1217135	2538473
Pimpri-Chinchwad	64.81	547050	465422	1012472
Poona Cantonment	13.88	41241	38724	79965
Kirkee Cantonment	13.23	43386	34087	77473
Dehu Road Cantonment	36.00	24855	22066	46921
Dehu	13.25	2751	2581	5332
Poona City Agglomeration	344.18	1980621	1780015	3760636

The Poona City Agglomeration consists of a multi-religious group, of which according to the 2001 Census 79.70% were Hindus, 8.89% were Muslims, 2.64% were Christians, 5.75% were Neo-Buddhists, 2.20% were Jains. The Poona City Agglomeration has 45% of the District, the sex ratio being 900 females per 1000 males. The population density is 10330 per sq.kms.

The majority of hospitals in Poona are maintained either by the Municipal Corporation, the State Government or public Trusts. There are three medical colleges in the area, viz., the B.J.Medical College, associated with the Sassoon General Hospital, the Armed Forces Medical College with the Command Hospital, and the B.A.M.S.College with the Seth Tarachand Hospital.

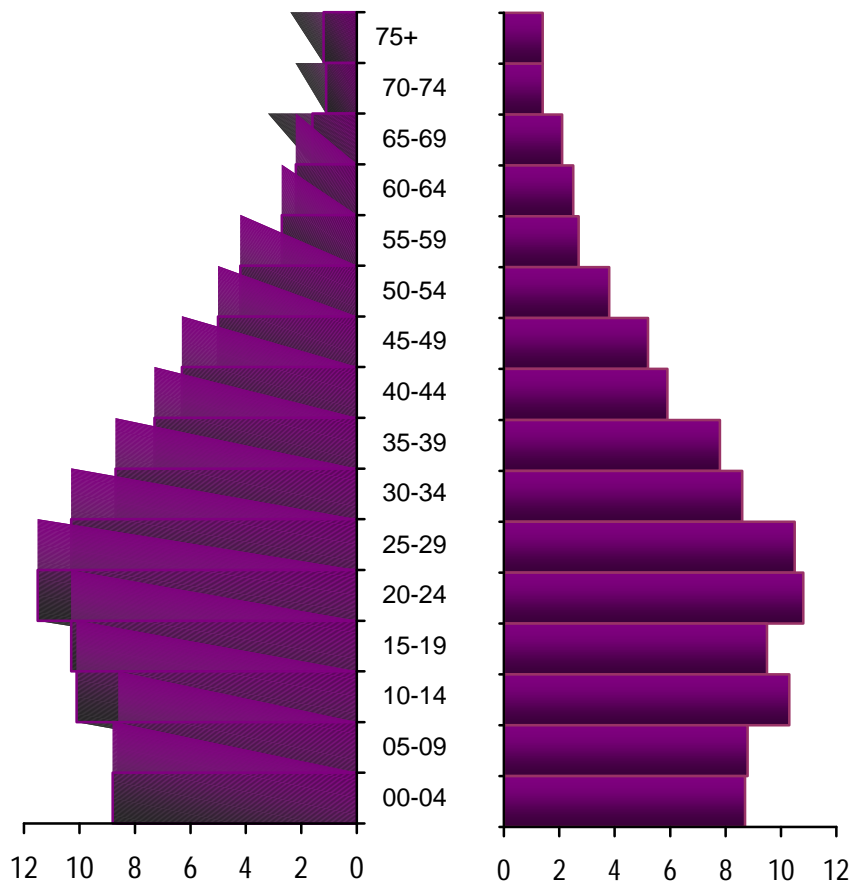
There are 142 other independent hospitals, 15 Health Centers, 10 Nursing Homes and 1095 Dispensaries in the survey zone. The diagnosis and treatment of cancer is however, centralized in six major hospitals and nursing homes, viz., the Sassoon General Hospital, the K.E.M. Hospital, the Lata Mangeshkar Hospital, the Ruby Hall Nursing Home, the Jahangir Nursing Home, the Inlaks Badhwari Hospital and the Armed Forces Command Hospital. Major cancer surgery is undertaken at all these institutes. Facilities for Cobalt 60 beam therapy are however available at Ruby Hall Nursing Home, Inlaks Budharani Hospital and the armed Forces Command Hospital.

Population Estimates

The Poona City Agglomeration included Poona city, Poona Cantonment, Kirkee Cantonment, Dehu Road Cantonment, Khadakwasla, Dehu Road, Lohagaon and The Pimpri Chinchwad New Township.

The base population was estimated from the 1991 and 2001 census reports of Maharashtra State. The population of Poona Agglomeration as on 1st January 2003, the midpoint of the period under the review (2001-2005), is estimated by “Distribution Method” by 5 year age and sex, using the 1991 and 2001 census figures.

The estimated population of the Poona City Agglomeration, as on 1st July 2003(the midpoint of the period 2001-2005) is 3.93 million (2.07 million males and 1.86 million females). Population distribution by age and sex for Poona City Agglomeration for the year 2003 is shown in the age-pyramid (Fig-1). The estimated population by age and sex is given in Table 1, and by religion and sex in Table 2.



Percentage Distribution of estimated Resident Population of Poona City as on 1st July 2003.

Cancer Registration System

Population based cancer registration is a procedure evolved to obtain detailed information on all persons affected by the disease who are resident within a precisely defined geographical area, which can be pooled and analyzed at a centralized repository. Such a registry differs in many ways from a survey, wherein similar information is obtained only as a spot check, during a select period of time, which can thus reveal only the prevalence of a disease, at a given time. The collection of factual information on the other hand is a continuous process in a registry setup, where efforts are made to obtain the necessary information, as soon as possible after diagnosis has been made.

During the period 2001-2005, information was obtained from all cancer patients registered in hospitals, under the care of consultants, physicians, surgeons, gynecologists and radiologists in Poona City and from Poona residents under treatment at the Tata Memorial and other leading hospitals in near-by Bombay City. General medical practitioners are not contacted individually, because according to local practice only medical specialists treat cancer patients in hospitals and nursing homes and even those patients not admitted for hospital care are at one stage or the other referred to such specialists by the general practitioners. The death records maintained by the Poona Municipal Corporation provide a means for checking on any missed cases.

Working of the Registry

Staff members personally visit the wards of the co-operating hospitals regularly, to interview all confirmed cancer patients and also those who are under cancer investigation. The record files maintained by the various departments of these hospitals viz. Pathology, Hematology, Radiology and the various registers in the specialized surgical and medical wards, are also examined.

The requisite details obtained for each patient, are cross-checked with the information collected from the various departments of the collaborating hospitals, to ensure completeness of records. Full information on every cancer patient registered at each and every hospital is thus obtained, irrespective of whether or not the patient is subsequently treated at the particular hospital. Additional information is obtained every time a cancer patient is re-admitted or re-examined at the institution.

As a result of such data collection from different hospitals. One and the same patient is sometimes found to be registered at two or more hospitals. Care is taken, to see that multiple entries for the same patient are not made in our records. On the other hand in some instances complete medical information is obtained by combining the data obtained from two or more hospitals, of one and the same patient.

Supplementary information can often be gleaned from the death records maintained by the Vital Statistics Division of the Poona Municipal Corporation. Copies are made of all death certificates, which mention cancer or tumor as the cause of death. These death certificates are then matched against the registered cases in our files. Every cancer death not traceable to an entry in our files, is labeled as an "unmatched death" and the date of death is then taken as the date of first diagnosis, and is so registered in the corresponding year's data file. Furthermore copies of all death certificates where the term 'Cancer' or 'Tumor' is mentioned as the cause of death, are individually scrutinized to confirm the statement.

Only patients residing in Poona City and suburbs are included in the register so that the information collected could be related to a known population at risk. Non-residents, whose residence cannot be specifically confirmed, are also not included in the study.

After collecting the necessary information from the various collaborating institutes, the proforma sheets are classified into three groups, resident, non-resident and residence not known. Non-resident cases are filed site-wise and sex-wise. If the cancer patient whose duration of residence is not known, is found enrolled in the electoral rolls, he is considered as a resident. All other cases whose duration of residence is not known, are filed alphabetically. The resident cases are cross checked with the cards of the alphabetic index. Previously reported cases were edited and the new cases were registered and filed according to the site of cancer, the sex of the patient and the registration number.

Copies of the death certificates, from the Vital Statistics Department of the Municipal Corporation are classified according to residential criteria. Non-resident cases are filed alphabetically, as per cause of death and sex. Resident cases are checked with the alphabetic index. Unmatched cases are registered in the morbidity files. All deaths (matched and unmatched) are entered separately in the corresponding years death files, and are filed numerically by sex and cause of death.

Sources of Data

Two major sources have been utilized for cancer data collection.

- All hospitals, nursing homes and consultants in private practice in the registry area.
- The Vital Statistics Division of the Department of Public Health of the Mumbai Municipal Corporation.

Cancer Incidence Reporting System

Cancer Incidence is defined as the occurrence of new cancer cases in a defined population during a specified time period. For the purpose of this report, 2001-2005 incidence is based on those cancers registered and which were first diagnosed between 1st January 2001 and 31st December 2005 from residents of Poona City Agglomeration.

All malignant tumors including those where the pathologist may merely suspected malignant changes are registered. Cases under code 'O' (Benign) or '1' (uncertain whether benign or malignant borderline malignancy) or '2' (carcinoma in situ) are not included in our files. Cancer cases where the death certificate is the only source of information, are however included. Patients, in whom cancer has been ruled out or has not yet been diagnosed, are also omitted from our register.

We utilize the coding system devised by the World Health Organization using code numbers C00-C95 as published in the Manual of the International classification of Diseases, Injuries and Causes of Death (10th revision of 1990).

For histology coding, the World Health Organization's 2002 edition of International Classification of Diseases for Oncology (ICD-O) giving histogenic and malignancy codes is followed, in conjunction with the primary site codes suggested by the World Health Organization.

Results

During the period under review (2001-2005), 12945 new cancer cases were registered among residents of Poona, which gives an average of 2589 new cases per annum. Of these 12945 new cases, 6058 were males and 6887 were females indicating a M/F sex ratio 0.88:1.0 which is somewhat reverse of the M/F sex ratio in the general population vix. 1.11:1.0

The number of new cases by year and sources of registration which percentage distribution for males and females are presented in Table 3 and 4 respectively. Out of the 12945 new cancer cases, 12223 were registered through collaborating hospitals and 722 were registered from Municipal Corporation files. More than 55% of the cases are registered at 4 major sources Ruby Hall Nursing Home (2150), Sassoon General Hospital (1789), King Edward Hospital (1203), and Inlack Budharani (2077). The number of incident cases by year and sex is shown in Fig.2

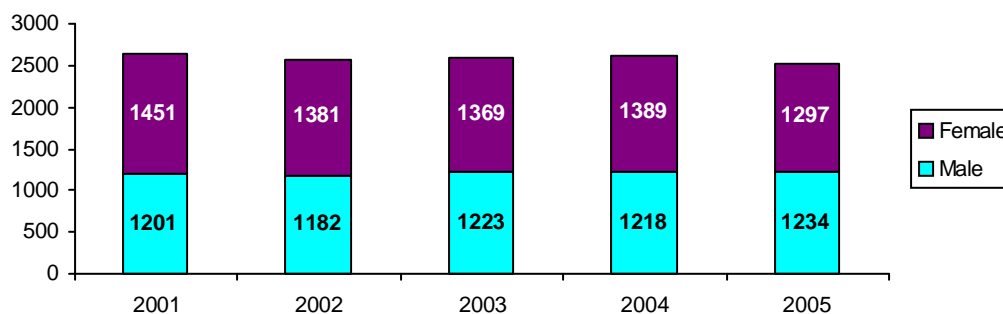


Fig2:
NUMBER OF INCIDENT CASES OF CANCER BY SEX AND YEAR OF REGISTRATION

Site

TABLE B: NUMBER OF NEW CANCER CASES BY SITEGROUP AND SEX WITH PERCENTAGE DISTRIBUTION, POONA CITY 2001-2005.						
SITE GROUP	MALE		FEMALE		TOTAL	
	CASES	%	CASES	%	CASES	%
Buccal Cavity & Pharynx	1088	18.0	619	9.0	1707	13.2
Digestive Organs	1561	25.8	1063	15.4	2624	20.3
Respiratory Organs	796	13.1	334	4.8	1130	8.7
Bone, C.Tissue, Skin, & Breast	333	5.5	2014	29.2	2347	18.1
Genital Organs	520	8.6	1787	25.9	2307	17.8
Urinary Organs	350	5.8	108	1.6	458	3.5
Eye, Brain, Thyroid & Secondary	708	11.7	529	7.7	1237	9.6
Lymphomas & Leukemias	702	11.6	433	6.3	1135	8.8
Total	6058	100.0	6887	100.0	12945	100.0

The percentage distribution of new cancer cases diagnosed during 2001-2005, by site-group and year of registration for males and females is presented in Table 5 and 6 respectively. In males, the digestive system is found to be most commonest cancer site group followed by buccal mucossa and respiratory organs in each year. In females, breast ranked first followed by genital organs and digestive system. Total number of cancer cases has been gradually increased each year from 2001 to 2005, and then it has been dropped slightly in both the sexes.

The percentage distribution of new cancer cases diagnosed during 2001-2005, by site group and sex is presented in Table B. The digestive system as a whole in males is found to be the commonest cancer site group, followed by buccal cavity and pharynx and respiratory organs. In females, the genital organs ranked first followed by cancers involved the breast and digestive system.

Age

The number of new cancer cases by site and age are presented in Table 7 & 8 for the period 2001-2005, for males and females respectively. The current distribution of the resident population and the new cancer cases by broad age groups and sex for the period 2001-2005 is presented in Table C.

TABLE C: PERCENTAGE DISTRIBUTION OF THE RESIDENT POPULATION AND NEW CANCER CASES BY AGE AND SEX, POONA CITY 2001-2005.						
AGE GROUP	POPULATION			NEW CANCER CASES		
	MALE	FEMALE	TOTAL	MALE	FEMALE	TOTAL
00-14	14.5	13.2	27.7	1.4	1.0	2.4
15-34	21.5	18.7	40.1	3.7	3.8	7.5
35-64	14.6	13.2	27.8	23.3	31.9	55.2
65+	2.1	2.3	4.4	18.5	16.5	35.0
TOTAL	52.6	47.4	100.0	46.8	53.2	100.0

This clearly indicates that cancer occurs mostly at older ages, as only 2.4% of the total number of cancer cases registered, were under 15 years of age, although this age group accounts for 27.7% of the total population in the Agglomeration. The association of cancer with the aging process is clearly shown by the fact that 35.0% of the cases were diagnosed in those aged 65 and above, an age group which comprises only 4.4% of the population (Fig 3).

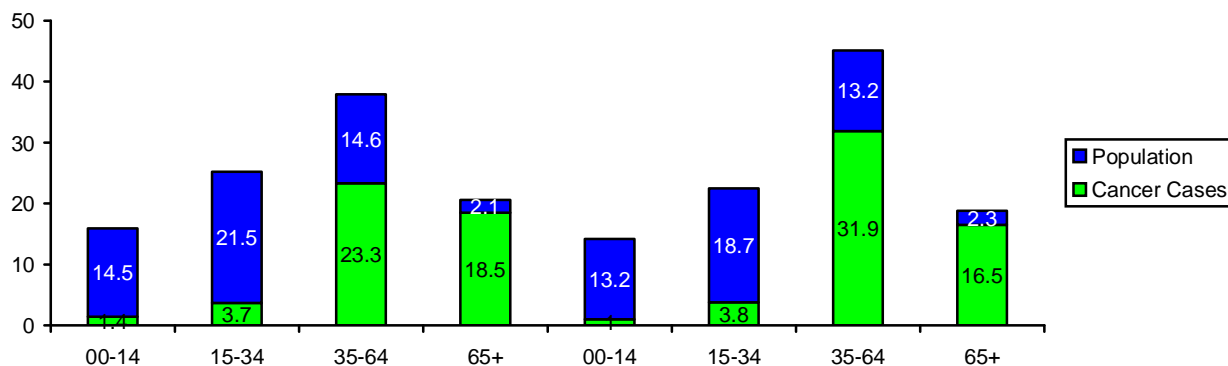


Fig.3

PERCENTAGE DISTRIBUTION OF THE RESIDENT POPULATION AND CANCER CASES

Average annual age-specific, crude, age-adjusted and truncated incidence rates by site, are given in Table 9 & 10 for males and females respectively.

By relating the average annual incidence to the estimated resident population of Poona City Agglomeration as on 1st January 2001 (mid point of the period 2001-2005), we find a crude cancer incidence rate of 65.9 per 100,000 population. The crude cancer incidence rate for females (74.0) was found to be higher by 19% than that for males (58.6).

Average annual age-specific incidence rates per 100,000 population for all cancer sites together by sex, for the period 2001-2005 are presented in Table D.

AGE-GROUP	MALE	FEMALE
00-04	6.7	5.6
05-09	5.3	4.4
10-14	6.9	4.6
15-19	7.3	6.9
20-24	9.5	7.6
25-29	11.0	13.1
30-34	18.7	28.5
35-39	35.0	78.4
40-44	50.9	104.8
45-49	81.4	154.7
50-54	149.4	241.0
55-59	207.7	291.8
60-64	341.3	361.2
65-69	459.7	391.1
70-74	557.9	484.6
75+	728.8	507.2
TOTAL	58.6	74.0

Cancer incidence rates were found to be increase sharply with age. The curves for men and women however were quite distinct. At the younger ages the incidence rates were found to be somewhat higher in males. Age-specific incidence rates were higher in females only between the age 25 to 64. The frequent occurrence of cancers involving the female genital organs and the breast, perhaps accounts for most of the differences noted between male and female rates, between the ages 25 to 64. Around the age of 65, the incidence curves for men and women intersect, the high incidence rates for the older males and perhaps primarily due to the high incidence of prostate, lung, oesophagus, stomach and larynx cancers (Fig.4).

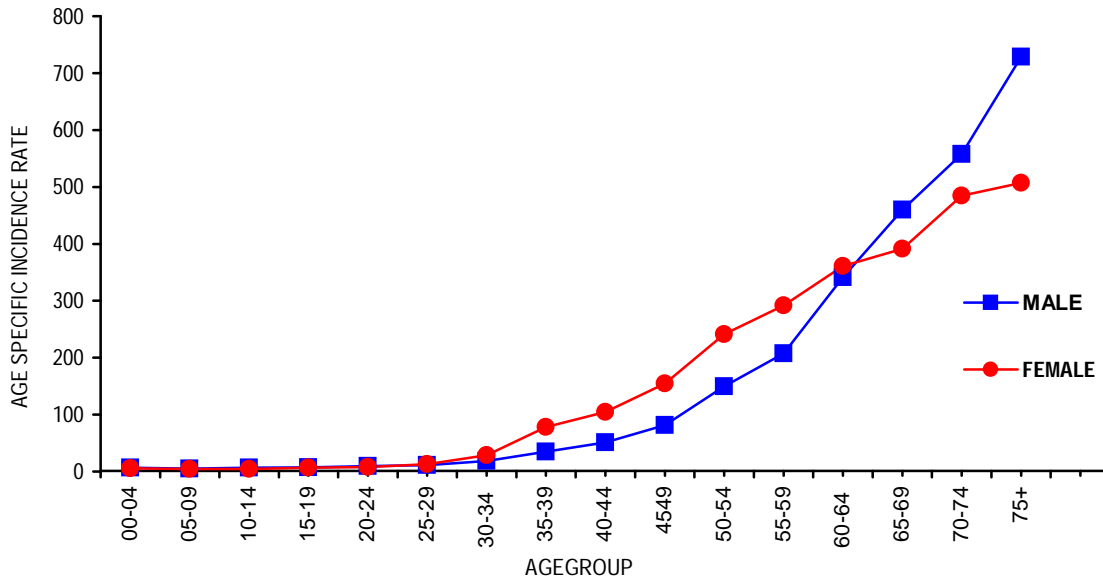


Fig.4

AGE SPECIFIC INCIDENCE RATES PER 100,000 POPULATION, FOR ALL CANCER SITES

Since the incidence of cancer is known to increase with age, comparison of the rates between different populations, should take into consideration the age composition of each group. The commonly accepted method of minimizing the difference in age distribution of the incidence rates is to base the rates to be compared, on a common age distribution. Cancer incidence rates adjusted to the age distribution, of the population of the World taken as a whole, indicated that the age-adjusted incidence rate of cancers in men at 84.4 is somewhat lower than that in women at 95.5

The most common sites of cancer based on age-adjusted incidence rates in males and females are shown in Table E. In males, prostate being the leading site with the lung coming second in rank. Oesophagus ranks third and larynx ranks fourth in men. Cancers of the breast are found to be predominant in females, the breast being the leading site with cervix coming second in rank. The ovary ranks third and mouth ranks fourth in women (Fig.5).

TABLE E: AVERAGE ANNUAL AGE-ADJUSTED INCIDENCE RATES BY SEX PER 100,000 POPULATION AT TEN LEADING SITE AND AT ALL SITE, 2001-2005							
MALE				FEMALE			
RANK	ICD10	SITE	AAR	RANK	ICD10	SITE	AAR
1	C61	Prostate	6.4	1	C50	Breast	24.5
2	C34	Lung	5.5	2	C53	Cervix	15.0
3	C15	Oesophagus	5.3	3	C56	Ovary	6.4
4	C32	Larynx	5.0	4	C04-06	Other Mouth	4.7
5	C81-C85	Lymphoma	4.6	5	C15	Oesophagus	4.3
6	C04-C06	Other Mouth	4.4	6	C34	Lung	3.3
7	C16	Stomach	4.0	7	C81-C85	Lymphoma	2.7
8	C22	Liver	3.9	8	C18	Colon	2.3
9	C71	Brain	3.6	9	C21	Rectum	2.2
10	C91-C95	Leukemia	3.1	10	C54	Corpus Uteri	2.1
AAR AT ALL SITES			84.4	AAR AT ALL SITES			95.5

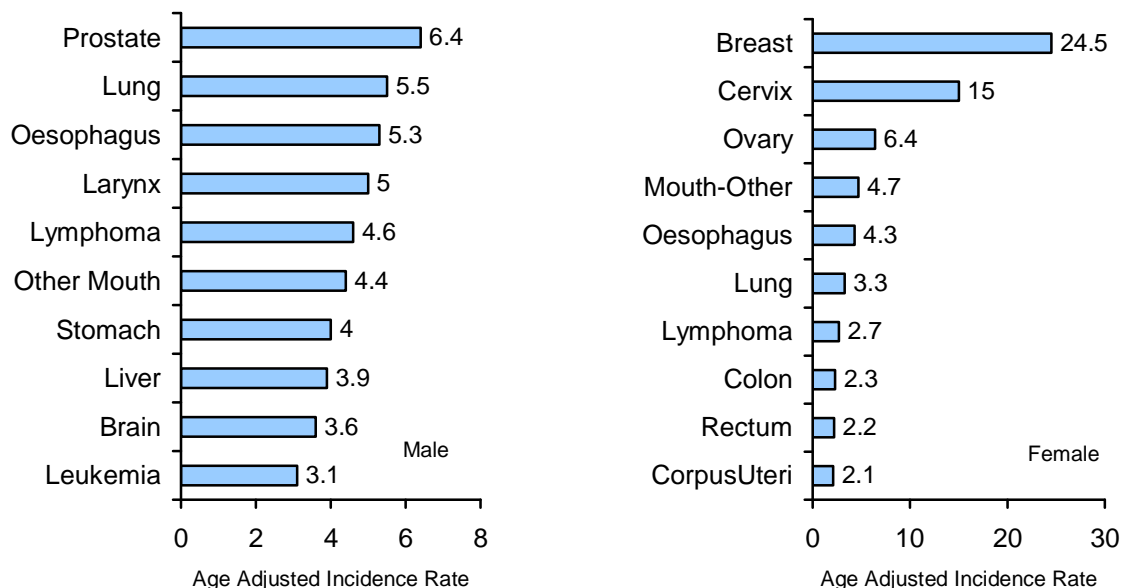


Fig.5

AGE ADJUSTED INCIDENCE RATES PER 100,000 POPULATION AT TEN LEADING SITES, 2001-2005.

Age reporting was found to be more reliable in the age group 35-64. The truncated incidence rates between the age 35 to 64 adjusted to the age distribution of the world population, are presented in Table F, where ten leading cancer sites ranked as per truncated rates for males and females are given (Fig. 6).

MALE				FEMALE			
RANK	ICD10	SITE	TR	RANK	ICD10	SITE	TR
1	C04-C06	Other Mouth	15.1	1	C50	Breast	55.7
2	C34	Lung	8.6	2	C53	Cervix	35.4
3	C32	Larynx	8.3	3	C56	Ovary	13.7
4	C15	Oesophagus	7.8	4	C04-C06	Other Mouth	10.4
5	C81-C85	Lymphoma	7.0	5	C15	Oesophagus	6.0
6	C16	Stomach	6.2	6	C34	Lung	5.2
6	C71	Brain	6.2	7	C71	Brain	4.5
8	C22	Liver	5.6	8	C81-C85	Lymphoma	4.3
9	C01-C02	Tongue	5.3	9	C54	Corpus Uteri	4.2
9	C18	Colon	4.7	10	C18	Colon	3.8
TR AT ALL SITES			127.3	TR AT ALL SITES			188.5

In males, the age group 35-64, cancer of the buccal mucosa rank first followed by cancer of the lung, larynx, and oesophagus in descending order. In females in the age-group 35-64, cancer of the breast ranks first followed by cancer of the cervix, ovary and buccal mucosa in descending order.

The highest incidence rates at different age groups by primary site in males and females are presented in Table G. In children, both in males and females, leukemias were found to be predominant. In males, in the age group 40-64, other-mouth was most frequent site and above the age of 65, those were cancers of the prostate. In females, breast was the most frequent site of cancer above the age of 20.

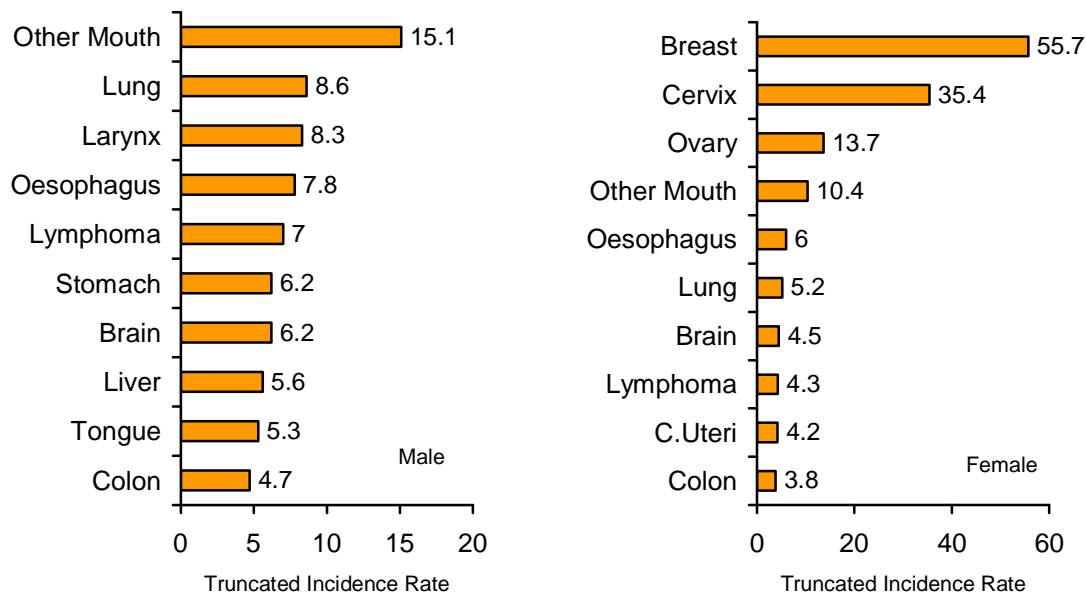


Fig. 6
TRUNCATED INCIDENCE RATES PER 100,000 POPULATION AT TEN LEADING SITE, 2001-2005

AGE GROUP	MALE		FEMALE	
	SITE	RATE	SITE	RATE
00-04	Leukemias	2.1	Leukemias	1.8
05-09	Leukemias	2.2	Leukemias	2.2
10-14	Leukemias	2.3	Leukemias	1.8
15-19	Leukemias	2.8	Leukemias	1.9
20-24	Leukemias	2.1	Breast	1.1
25-29	Brain	1.5	Breast	2.6
30-34	Lymphoma	2.1	Breast	8.2
35-39	Other Mouth	3.5	Breast	27.3
40-44	Other Mouth	7.8	Breast	36.5
45-49	Other Mouth	11.7	Breast	52.5
50-54	Other Mouth	22.1	Breast	74.7
55-59	Other Mouth	21.9	Breast	81.1
60-64	Other Mouth	32.4	Breast	83.2
65-69	Prostate	38.2	Breast	83.4
70-74	Prostate	71.9	Breast	94.9
75+	Prostate	143.5	Breast	96.9
ALL AGES	Other Mouth	5.0	Breast	19.0

Method of Diagnosis

An evaluation of the reliability of cancer data is usually measured by the percentage of patients having microscopic proof of diagnosis as compared with other methods which are considered less accurate. The percentage of new cancer cases diagnosed by method of diagnosis and sex is presented in Table H. During the period 2001-2005, 89.4% of the new cases recorded had microscopic confirmation of cancer. The percentage of patients diagnosed on the basis of clinical investigation was 1% and clinical alone was 5.6% and of cases were registered from death certificates alone. The number of new cancer cases by site and method of diagnosis for males and females are presented in Table 11 and 12 respectively. The percentage distribution of the cases according to method of diagnosis is shown in Fig 7.

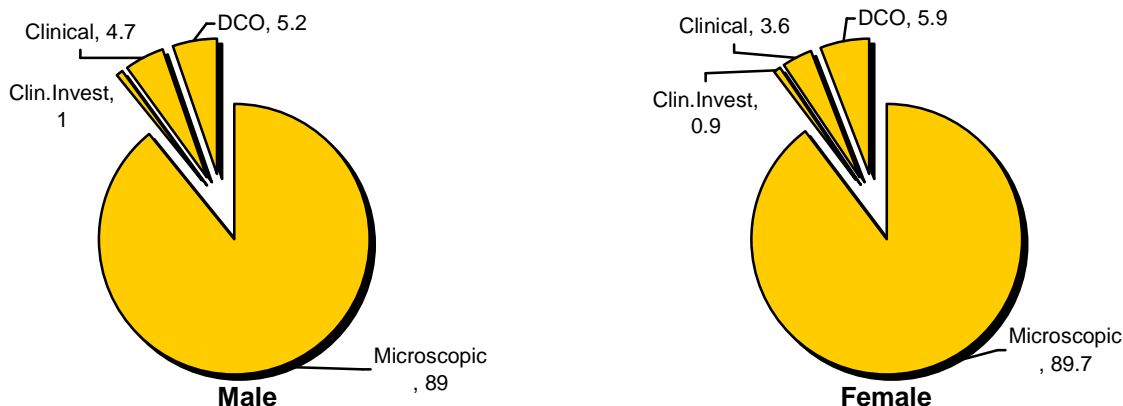


Fig. 7

PERCENTAGE DISTRIBUTION OF THE INCIDENT CASES OF CANCER BY METHOD OF DIAGNOSIS, 2001-2005

The percentage of patients having microscopic confirmation of cancer, depends primarily on the accessibility of the part affected. Histological confirmation of cancers arising in the buccal cavity, pharynx and the female genital tract are thus usually available with greater frequency than for tumors at inaccessible sites, such as the digestive and respiratory systems.

About 5.6% of cancer cases were registered through death certificates alone. This figure is considerably lower than in the previous years, which indicates the improvement in the coverage of the sources. Most probably these were patients with advanced disease who attended out-patient departments of various collaborating hospitals to seek medical advice at a late stage, when no active treatment was possible.

METHOD OF DIAGNOSIS	MALE		FEMALE		TOTAL	
	CASES	%	CASES	%	CASES	%
MICROSCOPIC	5393	89.0	6177	89.7	11570	89.4
CLINICAL INVESTIGATION	62	1.0	62	0.9	124	1.0
CLINICAL	287	4.7	242	3.5	529	4.1
DCO	316	5.2	406	5.9	722	5.6
TOTAL	6058	100.0	6887	100.0	12945	100.0

Religion

Considerable variation was noted in the incidence of cancer at various sites in both the sexes, in patients having their domicile in the countries and in those professing different religious faiths within a particular population, due to a variety of causes mainly endocrine, dietary or environmental. Such variations call for adequate investigations, to elucidate the complex etiology of the disease. To study the differences in cancer incidence by religion, the crude rates by religion and sex are presented in Table I. From this table it is evident that different religious groups in Poona City Agglomeration exhibit considerable variation in the total incidence of cancer in each sex.

RELIGION	MALE	FEMALE	TOTAL
HINDU	61.8	79.2	70.1
MUSLIM	55.4	58.7	57.0
CHRISTIAN	55.7	74.9	64.6
OTHERS	33.4	41.3	37.1
TOTAL	58.6	74.0	65.9

The different groups are distinguished from each other by their habits, customs and socio-economic status. Thus, even though living in the same environment, they present striking differences from each other, in the relative frequency with which cancer

occurs at various sites. An appraisal of this situation was this considered promising, in order to study the differences in site patterns of incidence. In order to define the magnitude and nature of the differences observed, the number of cancer cases and the percentage distribution of new cases in each religious group by site, are presented in Table 13 and 14 for males and females respectively.

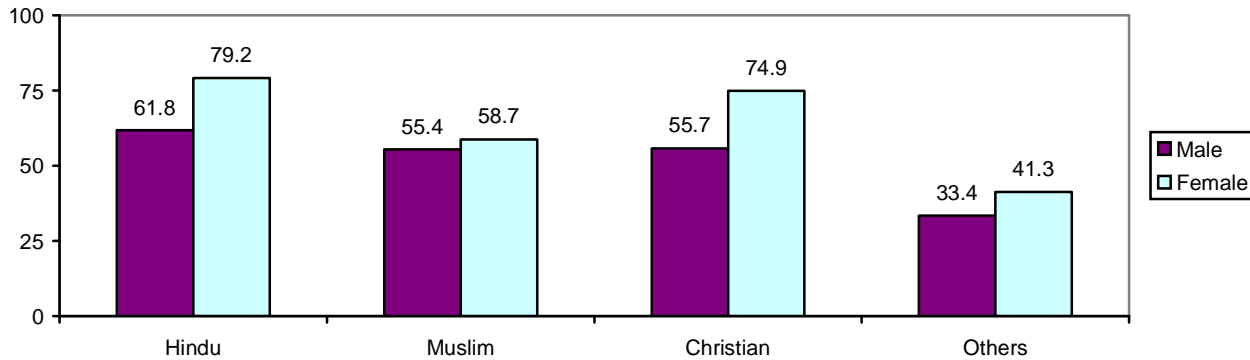


Fig.8
CRUDE INCIDENE RATES BY RELIGION, 2001-2005.

The site incidence patterns exhibit considerable differences in the various religious groups. The most common cancer sites in each religious group by sex are presented in Table J.

RELIGION	MALE			FEMALE		
	RANK	SITE	%	RANK	SITE	%
HINDU	1	Prostate	6.5	1	Breast	25.6
	2	Oesophagus	6.1	2	Cervix	16.2
	3	Lung	6.0	3	Ovary	6.6
	4	Lymphoma	5.7	4	Oesophagus	4.6
	5	Buccal Mucossa	5.4	5	Lung	3.3
MUSLIMS	1	Lung	7.3	1	Breast	24.7
	1	Tongue	6.1	2	Cervix	9.3
	1	Buccal Mucossa	6.1	3	Ovary	6.4
	4	Larynx	6.1	4	Lymphoma	5.3
	5	Oesophagus	5.7	5	Colon	4.5
CHRISTIAN	1	Prostate	8.6	1	Breast	30.3
	2	Lung	7.9	2	Cervix	9.7
	3	Larynx	6.6	3	Ovary	9.1
	3	Lymphoma	6.6	4	Lymphoma	6.8
	3	U.Bladder	6.6	5	Brain	5.1

Among males, in Hindus, the prostate is the leading site of cancer, while in Muslims the leading site is lung and in Christians is prostate. The oesophagus in Hindus, larynx in Muslims and lung in Christians ranks second.

Among females, in Hindus, Muslims and Christians the breast is the leading site followed by the cervix. The ovary takes 3rd rank in Hindus, Christians and in Muslims..

Histology

During the period 2001-2005, a total of 11570 cancer cases were confirmed microscopically, so that the proportion of histopathologically proved cases was found to be 89.4%. The various histological varieties observed in the Poona city Agglomeration for the period 2001-2005, by sex with percentage distribution is presented in Table 15.

Papillary and squamous cell neoplasms are found to be the commonest histological type constituting about 29.6% of the total number of the histologically proved cases. This is the most common variety affecting in both males and females. The next common variety affecting males is adenocarcinomas and in females are ductal, lobular and medullary neoplasms and adenocarcinomas.

The distribution of Histologically proved cases by site-groups and sex is present in Table 16.

The majority of cancers involving the buccal cavity and pharynx (87.5) are of papillary and squamous cell type. In the digestive organs, adenocarcinomas (54.5%) are the most commonest histologic variety followed by squamous cell carcinomas (20.0). The high incidence of oesophageal cancer accounts for the high percentage of squamous cell carcinoma in the population.

In the respiratory system, most cancers were of the squamous cell variety (43%). Adenocarcinomas were the next common histological variety affecting the respiratory system.

Sarcomas were the most common histological variety affecting the bone and connective tissue. Most malignant tumors involving the breast were of adenocarcinomas of which the infiltrating duct type accounted for 86.0%. In female genital organs, the majority of malignancies were of squamous cell type (56.9%)

In male genital organs, adenocarcinomas and squamous cell carcinomas accounted for 60.0% and 13.1% respectively. The most common type of cancer in the urinary tract was of transitional cell carcinomas (44.3%). Adenocarcinomas accounted for 38.4%.

Retinoblastomas were most common cancers found to involve the eye, and in the brain and nervous system, gliomas accounted for 87.9% of all malignancies. Follicular adenocarcinomas were most frequent in the thyroid and other endocrine glands.

In the lymphatic system, a high percentage of lymphomas, NOS or diffuse type was found in both the sexes. In the haematopoietic system, myeloid leukaemias accounted for 18.2% and lymphoid leukaemias accounted for 16.1% of all leukaemias.

Mortality

Mortality statistics have an impressive history as a useful tool for undertaking epidemiological studies of cancer. The mortality analysis of various occupational groups has provided the evidence, which lead to the discovery of several chemical carcinogens. Examination of time trends of the death rates, has in turn lead to the development of new etiologic hypotheses. Furthermore, international comparison of mortality data has been productive in outlining new directions for undertaking epidemiological field studies.

The significant role played by mortality data in epidemiological studies, in the past, was largely due to the unavailability of morbidity data, which is considered more valuable for undertaking epidemiological investigations. Gradually, the role of mortality studies has diminished with the establishment of population based cancer registries in various countries throughout the world and the availability of adequate morbidity data. The value of mortality data has also decreased with the increasing use of epidemiological field studies undertaken to test specific etiologic hypothesis, developed as a result of analysis of mortality statistics.

At our registry, mortality data has been obtained from the death records maintained by the vital statistical division of the Poona Municipal Corporation. Copies are made by us of all death certificates, which mention the worlds 'Cancer' or 'Tumor' as being the cause of death.

The number of cancer deaths by age and the cause of death for the period 2001-2005, are presented in Tables 17 and 18 for males and females respectively. The age-specific, crude, age-adjusted and truncated mortality rates, are presented in Table 19 and 20, for males and females respectively. The average age-adjusted death rates at all sites, were found to be 34.9 for males and 35.5 for females per 100,000 populations.

The leading sites of cancer deaths, ranked by age-adjusted rates in males and females, are given in Table K. Deaths from cancers of the lung, top the list in males, followed by deaths from cancers involving the oesophagus, stomach and prostate. Deaths from cancers of the breast, top the list in females, followed by deaths from cancers involving the oesophagus, cervix and ovary (Fig.9)

TABLE K: AVERAGE ANNUAL AGE ADJUSTED CANCER DEATH RATES PER 100,000 POPULATION AT ALL STIES AND THE LEADING SITES, 2001-2005					
MALE			FEMALE		
RANK	SITE	AAR	RANK	SITE	AAR
1	Lung	3.2	1	Breast	7.6
2	Oesophagus	2.7	2	Cervix	3.5
3	Liver	2.6	3	Ovary	2.9
3	Prostate	2.6	4	Oesophagus	2.5
5	Leukemia	2.2	5	Lung	2.0
6	Stomach	2.0	6	Leukemia	1.5
6	Lymphoma	2.0	7	Lymphoma	1.4
8	Mouth Other	1.6	8	Colon	1.3
9	Colon	1.4	9	Mouth Other	1.3
10	Pancreas	1.3	10	Stomach	1.2
ALL SITES		34.9	ALL SITES		35.5

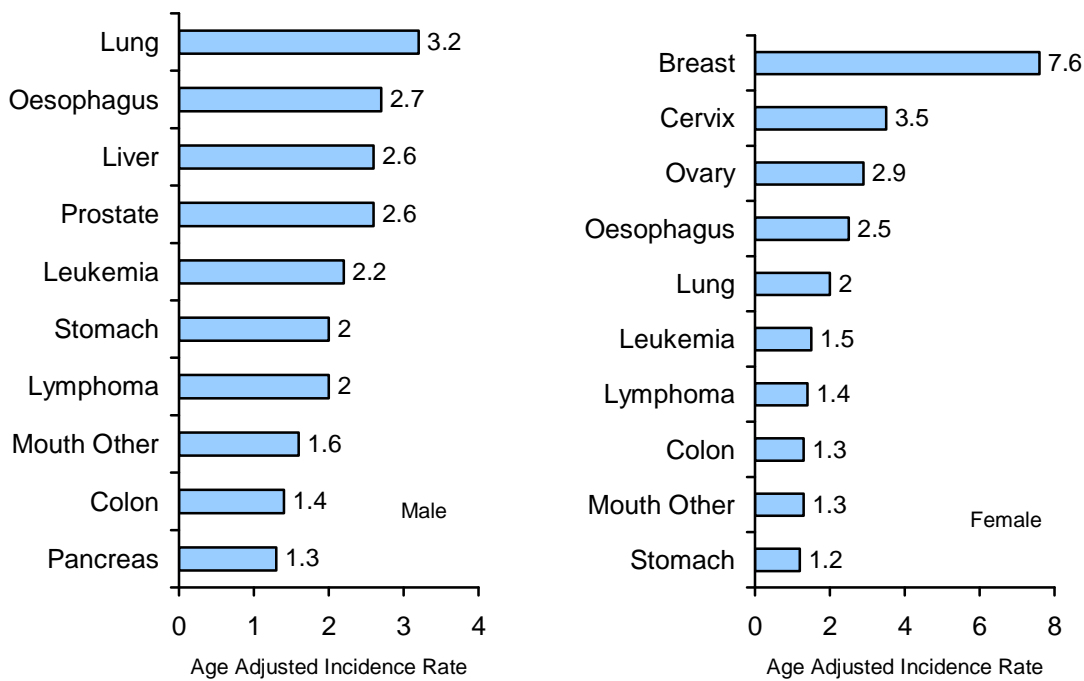


Fig.9
AGE-ADJUSTED DEATH RATES PER 100,000 AT TEN LEADING SITES, 2001-2005

The age specific rates were found to follow the general pattern of increase with age. The age-specific death rates for females were found to be generally lower than for males, except in the age-group 30 to 69 (Table L). This can be explained by the high mortality rates of female's genital cancers that occurs in the reproductive age groups (Fig. 10).

TABLE L: AVERAGE ANNUAL AGE SPECIFIC MORTALITY RATES PER 100,000 POPULATIONS BY SEX, 2001-2005.		
AGE-GROUP	MALE	FEMALE
00-04	2.1	1.5
05-09	2.4	1.6
10-14	1.9	1.5
15-19	2.0	1.9
20-24	3.3	2.0
25-29	3.4	3.1
30-34	5.6	7.5
35-39	10.0	18.9
40-44	13.9	25.3
45-49	26.8	45.0
50-54	48.1	72.1
55-59	76.9	95.3
60-64	125.0	18.1
65-69	197.6	163.3
70-74	259.5	240.7
75+	426.4	339.1
ALL AGES	23.2	35.5

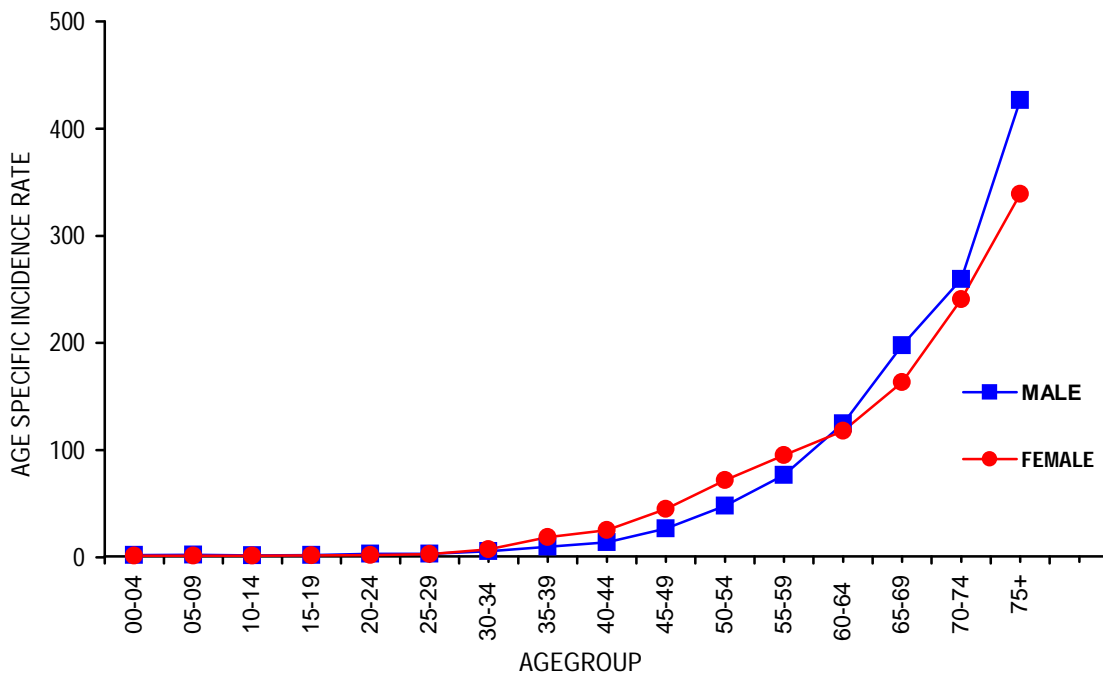


Fig.10
AGE SPECIFIC MORTLAITY RATES PER 100,000 POPULATIONS, FOR ALL CACNER SITES, 2001-2005

It is important to determine whether the pattern of age and sex in cancer mortality rates, in fact reflects the incidence rates. The relative comparison of the age distribution in the mortality and morbidity analysis and the age distribution of the population by sex, are given in Table M.

SEX	AGE	POPULATION	CANCER CASES	INDICATOR OF RELAT FREQ	CANCER DEATH	INDICATOR OF RELAT FREQ
MALE	00-14	27.5	3.0	10.9	2.5	9.1
	15-34	40.8	7.9	19.4	4.1	9.8
	35-60	25.5	49.7	194.9	44.1	172.9
	65+	3.9	39.4	1010.3	49.4	1266.7
FEMALE	00-14	27.8	2.1	7.6	1.6	5.8
	15-34	39.4	8.1	20.6	2.7	6.9
	35-60	27.9	68.1	244.1	40.8	146.2
	65+	4.9	35.3	720.4	54.9	1120.4
TOTAL	00-14	27.7	2.4	8.7	2.0	7.2
	15-34	40.1	7.5	18.7	3.3	8.2
	35-60	27.8	55.2	198.6	42.5	152.9
	65+	4.4	35.0	795.5	52.2	1186.4

Cancer incidence and mortality rates were found to be very low in the younger ages. The association of cancer incidence and mortality with the aging process, is clearly shown by the fact that the percentage of registered cancer cases and the percentage of the total number of deaths occurring in persons 65 years of age and above, are 35.0% and 52.2% respectively, as this group comprises only about 4.4% of the general population. The relative cancer incidence and mortality rates increase with age, in both the sexes. Indicators of the relative incidence and mortality, show that in the age group 00-14, the incidence rates were more or less equal in both the sexes while in the age group 15-64, the incidence rates are higher than the mortality rates but thereafter the mortality rates reach higher levels in both the sexes.

Tables

Table 1: Estimated Resident Population by Age and Sex as on 1st July 2003, Poona City, Total Population (All Religious Communities)

AgeGroup	Male		Female		Total	
	#	%	#	%	#	%
00--04	182186	8.81	162144	8.71	344330	8.76
05--09	177792	8.60	163905	8.81	341697	8.70
10--14	209463	10.13	191365	10.29	400828	10.20
15--19	212411	10.27	176570	9.49	388981	9.90
20--24	237442	11.48	201721	10.84	439163	11.18
25--29	213482	10.32	195788	10.52	409270	10.42
30--34	180693	8.74	159095	8.55	339788	8.65
35--39	151979	7.35	146011	7.85	297990	7.58
40--44	130826	6.32	109135	5.87	239961	6.11
45--49	103663	5.01	95926	5.16	199589	5.08
50--54	86063	4.16	70717	3.80	156780	3.99
55--59	55668	2.69	50794	2.73	106462	2.71
60--64	45118	2.18	46398	2.49	91516	2.33
65--69	33499	1.62	39074	2.10	72573	1.85
70--74	23660	1.14	25508	1.37	49168	1.25
75+	24532	1.19	26420	1.42	50952	1.30
Total	2068477	100.00	1860571	100.00	3929048	100.00

Table 2: Estimated Resident Population by Religion and Sex, Poona City (As on 1st July 2003).

Religion	Male		Female		Total	
	#	%	#	%	#	%
Hindu	1648633	41.96	1488145	37.88	3136778	79.84
Muslim	183855	4.68	165555	4.21	349411	8.89
Christian	54532	1.39	46749	1.19	101281	2.58
Budhist	10141	0.26	10044	0.26	20185	0.51
Jain	118998	3.03	103644	2.64	222642	5.67
Sikh	45541	1.16	40380	1.03	85921	2.19
Others	5143	0.13	4543	0.12	9696	0.25
Unknown	1633	0.04	1511	0.04	3144	0.08
Total	2068477	52.65	1860571	47.35	3929048	100.00

Table 3: Number of Incident Cases of Cancer by Source of Registration and Year with Percentages, Poona City, Male, 2001-05.

SOURCE	2001		2002		2003		2004		2005		Total	
	#	%	#	%	#	%	#	%	#	%	#	%
SGH	165	13.7	158	13.4	161	13.2	153	12.6	168	13.6	805	13.3
KEM	115	9.6	135	11.4	114	9.3	127	10.4	102	8.3	593	9.8
RHNH	154	12.8	139	11.8	123	10.1	99	8.1	125	10.1	640	10.6
JNH	61	5.1	72	6.1	74	6.1	71	5.8	71	5.8	349	5.8
WADIA	3	0.2	0	0.0	2	0.2	0	0.0	1	0.1	6	0.1
ESIS	18	1.5	13	1.1	12	1.0	11	0.9	0	0.0	54	0.9
JOSHI	27	2.2	20	1.7	17	1.4	26	2.1	23	1.9	113	1.9
POONA	29	2.4	22	1.9	39	3.2	35	2.9	28	2.3	153	2.5
KOLHATKAR	0	0.0	0	0.0	0	0.0	0	0.0	0	0.0	0	0.0
INLAKH	90	7.5	36	3.0	33	2.7	76	6.2	86	7.0	321	5.3
TMH	25	2.1	25	2.1	27	2.2	35	2.9	27	2.2	139	2.3
BOMBAY SMALL HOSP	16	1.3	8	0.7	6	0.5	3	0.2	4	0.3	37	0.6
LOKMANYA	11	0.9	10	0.8	4	0.3	0	0.0	0	0.0	25	0.4
BHARTI	2	0.2	4	0.3	4	0.3	3	0.2	0	0.0	13	0.2
PCH	20	1.7	23	1.9	2	0.2	0	0.0	0	0.0	45	0.7
SANJEEVANI	27	2.2	31	2.6	19	1.6	20	1.6	11	0.9	108	1.8
YCMC	28	2.3	41	3.5	39	3.2	38	3.1	38	3.1	184	3.0
CIPLA	101	8.4	77	6.5	88	7.2	88	7.2	85	6.9	439	7.2
POONA SMALL HOSP	45	3.7	79	6.7	104	8.5	83	6.8	134	10.9	445	7.3
PMC	72	6.0	55	4.7	69	5.6	64	5.3	105	8.5	365	6.0
RUBY-R	95	7.9	139	11.8	68	5.6	60	4.9	54	4.4	416	6.9
INLAKH-R	97	8.1	14	1.2	137	11.2	156	12.8	109	8.8	513	8.5
DEENANATH	0	0.0	81	6.9	81	6.6	70	5.7	63	5.1	295	4.9
Total	1201	100.0	1182	100.0	1223	100.0	1218	100.0	1234	100.0	6058	100.0

Table 4: Number of Incident Cases of Cancer by Source of Registration and Year with Percentages, Poona City, Female, 2001-05.

SOURCE	2001		2002		2003		2004		2005		Total	
	#	%	#	%	#	%	#	%	#	%	#	%
SGH	204	14.1	192	13.9	205	15.0	193	13.9	190	14.6	984	14.3
KEM	139	9.6	141	10.2	115	8.4	117	8.4	98	7.6	610	8.9
RHNH	133	9.2	119	8.6	106	7.7	78	5.6	106	8.2	542	7.9
JNH	50	3.4	69	5.0	55	4.0	68	4.9	68	5.2	310	4.5
WADIA	0	0.0	2	0.1	2	0.1	0	0.0	1	0.1	5	0.1
ESIS	24	1.7	12	0.9	23	1.7	16	1.2	0	0.0	75	1.1
JOSHI	49	3.4	36	2.6	27	2.0	30	2.2	47	3.6	189	2.7
POONA	29	2.0	32	2.3	41	3.0	42	3.0	33	2.5	177	2.6
KOLHATKAR	0	0.0	0	0.0	0	0.0	0	0.0	1	0.1	1	0.0
INLAKH	132	9.1	47	3.4	38	2.8	96	6.9	80	6.2	393	5.7
TMH	21	1.4	21	1.5	30	2.2	19	1.4	28	2.2	119	1.7
BOMBAY SMALL HOSP	4	0.3	8	0.6	8	0.6	5	0.4	6	0.5	31	0.5
LOKMANYA	12	0.8	14	1.0	7	0.5	0	0.0	0	0.0	33	0.5
BHARTI	1	0.1	3	0.2	2	0.1	3	0.2	0	0.0	9	0.1
PCH	19	1.3	14	1.0	0	0.0	0	0.0	0	0.0	33	0.5
SANJEEVANI	49	3.4	42	3.0	30	2.2	20	1.4	11	0.8	152	2.2
YCMC	49	3.4	49	3.5	38	2.8	26	1.9	57	4.4	219	3.2
CIPLA	114	7.9	88	6.4	122	8.9	137	9.9	109	8.4	570	8.3
POONA SMALL HOSP	44	3.0	59	4.3	72	5.3	68	4.9	65	5.0	308	4.5
PMC	95	6.5	73	5.3	73	5.3	78	5.6	116	8.9	435	6.3
RUBY-R	143	9.9	144	10.4	110	8.0	81	5.8	74	5.7	552	8.0
INLAKH-R	140	9.6	138	10.0	182	13.3	244	17.6	146	11.3	850	12.3
DEENANATH	0	0.0	78	5.6	83	6.1	68	4.9	61	4.7	290	4.2
Total	1451	100.0	1381	100.0	1369	100.0	1389	100.0	1297	100.0	6887	100.0

Table 5: Number of Incident Cases of Cancer by Site Group and Year of Registration, with percentages, Poona City, Male, 2001-05.

ICD10	Description	2001		2002		2003		2004		2005		Total	
		#	%	#	%	#	%	#	%	#	%	#	%
C00-C14	Lip, Oral Cavity & Pharynx	216	18.0	199	16.8	225	18.4	243	20.0	205	16.6	1088	18.0
C15-C26	C15-C26 Digestive Organs	287	23.9	320	27.1	311	25.4	292	24.0	351	28.4	1561	25.8
C30-C39	C30-C39 Respiratory Systems	181	15.1	158	13.4	156	12.8	160	13.1	141	11.4	796	13.1
C40-C41	41 Bone & Connective Tissue	44	3.7	34	2.9	42	3.4	27	2.2	41	3.3	188	3.1
C44	Skin	23	1.9	19	1.6	16	1.3	12	1.0	16	1.3	86	1.4
C50	Breast	9	0.7	19	1.6	10	0.8	12	1.0	9	0.7	59	1.0
C60-C63	Male Genital Organs	101	8.4	95	8.0	108	8.8	108	8.9	108	8.8	520	8.6
C64-C68	Urinary Organs	62	5.2	67	5.7	73	6.0	68	5.6	80	6.5	350	5.8
C69-C72	Eye & Nervous Systems	63	5.2	61	5.2	61	5.0	70	5.7	59	4.8	314	5.2
C73-C75	Thyroid & Other Endocrine Glands	17	1.4	13	1.1	7	0.6	20	1.6	11	0.9	68	1.1
C76-C80	Illdefined, Lymphnodes, Sec.	66	5.5	53	4.5	61	5.0	56	4.6	90	7.3	326	5.4
C81-C96	Lymphoid, Haem. & Rel. Tissue	132	11.0	144	12.2	153	12.5	150	12.3	123	10.0	702	11.6
Total		1201	100.0	1182	100.0	1223	100.0	1218	100.0	1234	100.0	6058	100.0

Table 6: Number of Incident Cases of Cancer by Site Group and Year of Registration, with percentages, Poona City, Female, 2001-05.

ICD10	Description	2001		2002		2003		2004		2005		Total	
		#	%	#	%	#	%	#	%	#	%	#	%
C00-C14	Lip, Oral Cavity & Pharynx	144	9.9	136	9.8	105	7.7	123	8.9	111	8.6	619	9.0
C15-C26	Digestive Organs	201	13.9	242	17.5	205	15.0	190	13.7	225	17.3	1063	15.4
C30-C39	Respiratory Systems	66	4.5	58	4.2	83	6.1	70	5.0	57	4.4	334	4.8
C40-C41	Bone & Connective Tissue	35	2.4	28	2.0	26	1.9	33	2.4	43	3.3	165	2.4
C44	Skin	20	1.4	15	1.1	20	1.5	16	1.2	14	1.1	85	1.2
C50	Breast	351	24.2	363	26.3	355	25.9	368	26.5	327	25.2	1764	25.6
C51-C58	Female Genital Organs	421	29.0	338	24.5	356	26.0	368	26.5	304	23.4	1787	25.9
C64-C68	Urinary Organs	17	1.2	33	2.4	25	1.8	19	1.4	14	1.1	108	1.6
C69-C72	Eye & Nervous Systems	23	1.6	39	2.8	38	2.8	45	3.2	52	4.0	197	2.9
C73-C75	Thyroid & Other Endocrine Glands	19	1.3	15	1.1	29	2.1	23	1.7	15	1.2	101	1.5
C76-C80	Illdefined, Lymphnodes, Sec.	45	3.1	44	3.2	40	2.9	37	2.7	65	5.0	231	3.4
C81-C96	Lymphoid, Haem. & Rel. Tissue	109	7.5	70	5.1	87	6.4	97	7.0	70	5.4	433	6.3
Total		1451	100.0	1381	100.0	1369	100.0	1389	100.0	1297	100.0	6887	100.0

Table7: Number of Incident Cases of Cancer by Age and Site (ICD-10), with Percentages, Poona City, 2001-05, Male

ICD-10	0	5	10	15	20	25	30	35	40	45	50	55	60	65	70	75	ANS	Total	%
C00 Lip	0	0	0	0	0	0	0	0	2	2	5	5	8	6	7	3	1	39	0.6
C01-02 Tongue	0	1	0	1	3	9	12	3	20	21	20	27	32	33	17	19	2	220	3.6
C03 Gum	0	0	0	0	1	0	0	10	14	22	33	25	25	19	21	8	3	181	3.0
C04-06 Other Mouth	0	0	2	1	2	3	10	17	37	40	62	36	48	41	16	14	3	332	5.5
C07-08 Salivary Gland	0	0	0	0	1	1	3	4	2	1	5	6	5	0	3	3	2	36	0.6
C09-10 Oropharynx	0	0	0	0	1	0	1	2	4	5	16	8	12	7	8	5	1	70	1.2
C11 Nasopharynx	0	1	2	6	3	1	4	2	6	2	3	3	4	1	1	3	0	42	0.7
C12-13 Hypopharynx	0	0	0	0	0	0	0	4	1	12	21	17	24	23	16	21	3	142	2.3
C14 Pharynx	0	0	0	0	0	0	2	0	2	0	2	4	3	3	4	6	0	26	0.4
C15 Oesophagus	0	0	0	0	1	4	1	13	26	31	34	41	42	63	50	53	2	361	6.0
C16 Stomach	0	0	0	0	2	3	9	6	14	15	36	33	38	38	32	46	1	273	4.5
C17 Small Intenstine	0	0	0	0	0	2	0	0	0	1	1	2	0	0	0	3	1	10	0.2
C18 Colon	0	0	0	0	1	6	7	8	10	13	27	16	35	26	25	33	0	207	3.4
C19-21 Rectum	0	1	1	0	6	3	9	20	9	15	26	23	20	32	22	32	4	223	3.7
C22 Liver	4	0	2	1	1	2	3	11	9	19	32	21	38	38	34	50	0	265	4.4
C23-24 Gall Bladder,Bile	0	0	0	0	1	0	1	4	3	1	6	3	10	13	11	14	1	68	1.1
C25 Pancreas	0	0	0	0	0	1	4	9	4	5	19	16	27	11	10	24	0	130	2.1
C26 Other Digest	0	0	0	0	0	0	0	0	1	0	0	1	2	3	3	5	0	15	0.2
C30-31 Nose, sinuse	1	0	0	1	1	0	3	3	8	6	11	7	7	7	4	5	1	65	1.1
C32 Larynx	1	0	0	1	1	2	1	14	9	24	35	38	65	56	36	46	7	336	5.5
C33-34 Lung	0	0	0	0	1	6	5	6	19	21	38	56	53	55	53	56	4	373	6.2
C37-38 Mediast.,plura	0	0	0	0	1	0	2	1	1	1	1	2	5	1	3	3	0	21	0.3
C39 Respir.Tract	0	0	0	0	0	0	0	0	0	0	1	0	0	0	0	0	0	1	0.0
C40-41 Bone	0	1	8	11	11	4	7	10	2	2	4	3	2	1	2	3	1	72	1.2
C43 Skin-Melanoma	0	0	0	0	0	2	2	0	0	2	0	3	0	1	1	3	0	14	0.2
C44 Skin-others	0	0	1	0	3	0	1	2	3	6	7	8	6	9	5	18	3	72	1.2
C48 Retroperitoneum	0	0	0	0	0	0	0	0	1	0	1	1	4	0	2	0	0	9	0.1
C49 Conn.&Soft Tissue	3	1	2	5	8	10	5	8	11	2	8	10	7	17	8	10	1	116	1.9
C50 Breast	0	0	0	0	0	0	1	2	5	4	6	11	11	8	5	4	2	59	1.0
C60 Penis	0	0	0	0	1	0	2	5	8	4	9	1	11	8	10	10	0	69	1.1
C61 Prostate	0	0	0	1	1	1	0	1	1	4	6	15	31	64	85	176	2	388	6.4
C62 Testis	1	0	2	0	4	9	8	11	4	1	4	1	3	5	1	4	2	60	1.0
C63 Oth Male Genital	0	0	0	0	0	0	0	0	0	1	2	0	0	0	0	0	0	3	0.0
C64-65 Kidney	6	1	1	1	0	5	4	7	6	5	19	13	14	15	13	19	3	132	2.2
C66-68 U.Bladder	0	0	0	0	0	1	5	5	7	17	17	14	31	31	45	44	1	218	3.6
C69 Eye	7	1	0	0	0	0	0	0	0	0	0	1	1	0	0	0	0	10	0.2
C70-72 Brain	7	17	16	10	16	16	15	19	30	32	26	21	29	19	12	17	2	304	5.0
C73 Thyroid	0	0	0	0	3	1	3	5	4	8	4	5	7	6	4	3	1	54	0.9
C74-75 Oth.Endo.Gland	7	1	0	0	1	0	0	0	0	1	1	0	2	0	0	1	0	14	0.2
C76 Ill Diff sites	0	0	0	0	0	0	0	1	0	3	0	0	1	3	1	2	0	11	0.2
C77 Sec.Lymphnodes	0	0	0	0	1	0	1	3	1	3	9	3	11	5	3	10	1	51	0.8
C78 Sec.Res.& Dig.Sys	0	0	0	0	1	0	2	2	2	2	5	3	7	6	7	9	0	46	0.8
C79 Sec.Others	0	0	0	0	0	0	0	0	2	3	2	2	6	3	4	1	0	23	0.4
C80 Prim Unk	3	0	0	2	2	2	6	11	5	14	20	17	19	31	26	34	3	195	3.2
C81 Hodgkin Lymphoma	0	0	6	6	5	6	8	7	5	5	6	2	2	8	6	1	1	74	1.2
C82-85 N.H.Lymphoma	1	2	5	3	3	8	11	15	20	20	27	28	37	34	24	36	2	276	4.6
C90 Mult-Myeloma	0	0	0	0	0	1	0	3	3	10	10	10	11	5	6	15	1	75	1.2
C91 Leuk-Lymphoid	15	16	15	18	11	0	6	3	3	4	5	3	7	5	2	6	3	122	2.0
C92 Leuk-Myeloid	1	2	5	8	11	6	4	8	7	12	7	10	7	8	10	12	0	118	1.9
C95 Leuk-Unsp	4	2	4	2	4	2	1	1	2	0	4	3	0	2	2	4	0	37	0.6
Total	61	47	72	78	113	117	169	266	333	422	643	578	770	770	660	894	65	6058	100.0

Table 8: Number of Incident Cases of Cancer by Age and Site (ICD-10), with Percentages, Poona City, 2001-05, Female

ICD10	0	5	10	15	20	25	30	35	40	45	50	55	60	65	70	75	ANS	Total	%
C00 Lip	0	0	0	0	0	0	1	2	3	1	0	1	6	3	3	3	0	23	0.3
C01-02 Tongue	0	0	0	0	1	4	6	6	4	11	28	10	22	19	8	8	4	131	1.9
C03 Gum	0	0	0	0	0	1	2	5	3	13	22	18	18	11	13	6	5	117	1.7
C04-06 Other Mouth	0	0	0	1	1	2	6	8	19	22	22	28	42	20	20	18	2	211	3.1
C07-08 Salivary Gland	0	1	0	1	2	1	1	0	2	4	1	2	3	2	3	2	1	26	0.4
C09-10 Oropharynx	0	0	0	0	0	0	1	1	1	1	6	2	0	4	1	2	0	19	0.3
C11 Nasopharynx	0	0	1	0	1	1	1	0	0	1	3	0	1	2	4	2	0	17	0.2
C12-13 Hypopharynx	0	0	0	0	0	0	3	3	9	5	5	12	6	9	5	3	2	62	0.9
C14 Pharynx	0	0	0	0	0	0	0	1	1	2	1	0	2	2	2	2	0	13	0.2
C15 Oesophagus	0	0	0	0	0	1	7	7	14	13	25	33	33	47	51	58	5	294	4.3
C16 Stomach	0	0	0	0	0	0	2	5	10	7	14	15	14	22	22	22	2	135	2.0
C17 Small Intestine	0	0	0	0	0	0	0	1	2	0	2	2	1	0	0	5	0	13	0.2
C18 Colon	0	0	0	1	2	3	4	11	3	15	14	11	32	22	15	30	3	166	2.4
C19-21 Rectum	0	0	1	0	3	2	4	7	7	9	17	17	24	25	17	17	2	152	2.2
C22 Liver	4	0	0	0	1	2	2	5	7	9	11	10	12	16	10	27	1	117	1.7
C23-24 Gall Bladder, Bile	0	0	0	0	0	0	0	1	6	3	18	7	11	9	7	13	1	76	1.1
C25 Pancreas	0	0	1	0	2	2	0	1	5	2	6	4	11	15	13	13	1	76	1.1
C26 Other Digest	0	0	0	0	0	0	1	0	0	0	0	1	0	0	3	2	0	7	0.1
C30-31 Nose, sinuse	0	0	0	0	0	1	1	2	6	1	4	3	4	4	4	6	3	39	0.6
C32 Larynx	0	0	0	0	0	0	1	1	3	7	6	3	7	5	6	12	2	53	0.8
C33-34 Lung	0	0	1	0	2	4	8	10	16	22	21	20	25	39	29	31	2	230	3.3
C37-38 Mediast.,plura	0	0	0	0	0	0	0	0	0	3	2	0	1	2	3	1	0	12	0.2
C40-41 Bone	0	1	2	12	5	4	4	3	4	2	3	5	1	4	3	5	4	62	0.9
C43 Skin-Melanoma	0	0	0	0	0	0	1	1	0	3	2	0	3	5	0	1	0	16	0.2
C44 Skin-others	0	0	0	0	1	1	4	2	4	6	8	5	11	9	6	10	2	69	1.0
C48 Retroperitoneum	0	0	0	0	1	1	0	2	1	3	1	3	3	1	6	5	0	27	0.4
C49 Conn.&Soft Tissue	5	1	3	6	3	4	5	7	13	8	11	10	10	4	6	4	3	103	1.5
C50 Breast	1	1	0	3	11	25	65	124	199	252	264	206	193	163	121	128	8	1764	25.6
C51-52 Oth Fem Genital	0	0	0	0	0	0	1	5	4	5	13	5	6	12	10	11	1	73	1.1
C53 Cervix	0	1	0	1	1	17	40	70	116	165	142	135	148	101	70	62	7	1076	15.6
C54 Corpus Uteri	0	0	0	1	0	1	0	3	7	11	20	24	22	20	19	10	6	144	2.1
C55 Uterus	0	0	0	0	0	0	0	1	3	2	1	5	0	10	7	4	0	33	0.5
C56 Ovary	0	1	0	3	10	11	10	27	39	50	69	52	62	45	44	31	4	458	6.7
C58 Placenta	0	0	0	0	1	1	0	1	0	0	0	0	0	0	0	0	0	3	0.0
C64-65 Kidney	6	1	0	1	0	1	1	2	2	3	7	11	3	12	4	6	0	60	0.9
C66-68 U.Bladder	0	0	0	0	0	0	2	0	1	6	3	5	5	6	8	12	0	48	0.7
C69 Eye	3	0	0	0	0	1	0	0	0	0	0	0	0	0	0	0	1	5	0.1
C70-72 Brain	5	8	10	8	6	14	10	10	16	15	15	18	23	11	11	9	3	192	2.8
C73 Thyroid	0	0	0	0	8	5	8	4	4	5	6	9	8	14	10	6	1	88	1.3
C74-75 Oth.Endo.Gland	5	1	0	0	1	0	0	2	1	1	0	1	0	0	1	0	0	13	0.2
C76 Ill Diff sites	0	0	1	0	0	1	0	0	1	2	2	2	2	0	0	3	1	15	0.2
C77 Sec.Lymphnodes	0	0	0	0	0	1	1	0	3	4	7	3	2	3	1	3	0	28	0.4
C78 Sec.Res.& Dig.Sys	0	0	0	0	1	2	0	1	3	3	2	4	1	2	3	7	1	30	0.4
C79 Sec.Others	0	0	0	0	0	0	2	0	1	4	2	2	4	5	0	2	1	23	0.3
C80 Prim Unk	0	0	0	1	2	2	1	4	7	14	15	12	20	15	14	24	4	135	2.0
C81 Hodgkin Lymphoma	1	1	3	4	3	3	2	3	1	1	3	3	3	3	1	1	0	36	0.5
C82-85 N.H.Lymphoma	0	1	3	1	2	3	9	11	13	13	15	10	21	24	17	24	3	170	2.5
C90 Mult-Myeloma	0	0	0	0	0	0	0	3	1	3	5	7	6	6	7	6	3	47	0.7
C91 Leuk-Lymphoid	11	11	9	10	0	2	2	2	3	2	0	0	1	2	3	4	0	62	0.9
C92 Leuk-Myeloid	2	3	6	6	6	4	5	11	4	8	5	4	5	8	6	8	0	91	1.3
C95 Leuk-Unsp	2	4	3	1	0	0	3	7	0	0	3	1	0	1	1	1	0	27	0.4
Total All Sites	45	36	44	61	77	128	227	383	572	742	852	741	838	764	618	670	89	6887	100.0

Table 9: Average Annual Age-Specific, World Age Adjusted, Truncated (35-64) Incidence Rates of Cancer Cases per 100,000 Persons, Poona City, 2001-05 Male.

ICD-10	0	5	10	15	20	25	30	35	40	45	50	55	60	65	70	75	CR	AAR	TR
C00 Lip	0.0	0.0	0.0	0.0	0.0	0.0	0.0	0.0	0.3	0.4	1.2	1.8	3.5	3.6	5.9	2.4	0.4	0.6	1.0
C01-02 Tongue	0.0	0.1	0.0	0.1	0.3	0.8	1.3	0.4	3.1	4.1	4.6	9.7	14.2	19.7	14.4	15.5	2.1	3.0	5.3
C03 Gum	0.0	0.0	0.0	0.0	0.1	0.0	0.0	1.3	2.1	4.2	7.7	9.0	11.1	11.3	17.8	6.5	1.8	2.5	5.3
C04-06 Other Mouth	0.0	0.0	0.2	0.1	0.2	0.3	1.1	2.2	5.7	7.7	14.4	12.9	21.3	24.5	13.5	11.4	3.2	4.4	9.8
C07-08 Salivary Gland	0.0	0.0	0.0	0.0	0.1	0.1	0.3	0.5	0.3	0.2	1.2	2.2	2.2	0.0	2.5	2.4	0.3	0.4	0.9
C09-10 Oropharynx	0.0	0.0	0.0	0.0	0.1	0.0	0.1	0.3	0.6	1.0	3.7	2.9	5.3	4.2	6.8	4.1	0.7	1.0	2.0
C11 Nasopharynx	0.0	0.1	0.2	0.6	0.3	0.1	0.4	0.3	0.9	0.4	0.7	1.1	1.8	0.6	0.8	2.4	0.4	0.5	0.8
C12-13 Hypopharynx	0.0	0.0	0.0	0.0	0.0	0.0	0.0	0.5	0.2	2.3	4.9	6.1	10.6	13.7	13.5	17.1	1.4	2.1	3.5
C14 Pharynx	0.0	0.0	0.0	0.0	0.0	0.0	0.2	0.0	0.3	0.0	0.5	1.4	1.3	1.8	3.4	4.9	0.3	0.4	0.5
C15 Oesophagus	0.0	0.0	0.0	0.0	0.1	0.4	0.1	1.7	4.0	6.0	7.9	14.7	18.6	37.6	42.3	43.2	3.5	5.3	7.8
C16 Stomach	0.0	0.0	0.0	0.0	0.2	0.3	1.0	0.8	2.1	2.9	8.4	11.9	16.8	22.7	27.0	37.5	2.6	4.0	6.2
C17 Small Intestine	0.0	0.0	0.0	0.0	0.0	0.2	0.0	0.0	0.0	0.2	0.2	0.7	0.0	0.0	0.0	2.4	0.1	0.1	0.2
C18 Colon	0.0	0.0	0.0	0.0	0.1	0.6	0.8	1.1	1.5	2.5	6.3	5.7	15.5	15.5	21.1	26.9	2.0	3.0	4.7
C19-21 Rectum	0.0	0.1	0.1	0.0	0.5	0.3	1.0	2.6	1.4	2.9	6.0	8.3	8.9	19.1	18.6	26.1	2.2	3.0	4.5
C22 Liver	0.4	0.0	0.2	0.1	0.1	0.2	0.3	1.4	1.4	3.7	7.4	7.5	16.8	22.7	28.7	40.8	2.6	3.9	5.6
C23-24 Gall Bladder,Bile	0.0	0.0	0.0	0.0	0.1	0.0	0.1	0.5	0.5	0.2	1.4	1.1	4.4	7.8	9.3	11.4	0.7	1.0	1.2
C25 Pancreas	0.0	0.0	0.0	0.0	0.0	0.1	0.4	1.2	0.6	1.0	4.4	5.7	12.0	6.6	8.5	19.6	1.3	1.9	3.5
C26 Other Digest	0.0	0.0	0.0	0.0	0.0	0.0	0.0	0.0	0.2	0.0	0.0	0.4	0.9	1.8	2.5	4.1	0.1	0.2	0.2
C30-31 Nose, sinuse	0.1	0.0	0.0	0.1	0.1	0.0	0.3	0.4	1.2	1.2	2.6	2.5	3.1	4.2	3.4	4.1	0.6	0.8	1.7
C32 Larynx	0.1	0.0	0.0	0.1	0.1	0.2	0.1	1.8	1.4	4.6	8.1	13.7	28.8	33.4	30.4	37.5	3.2	5.0	8.3
C33-34 Lung	0.0	0.0	0.0	0.0	0.1	0.6	0.6	0.8	2.9	4.1	8.8	20.1	23.5	32.8	44.8	45.7	3.6	5.5	8.6
C37-38 Mediast.,plura	0.0	0.0	0.0	0.0	0.1	0.0	0.2	0.1	0.2	0.2	0.2	0.7	2.2	0.6	2.5	2.4	0.2	0.3	0.5
C39 Respir.Tract	0.0	0.0	0.0	0.0	0.0	0.0	0.0	0.0	0.0	0.0	0.2	0.0	0.0	0.0	0.0	0.0	0.0	0.0	0.0
C40-41 Bone	0.0	0.1	0.8	1.0	0.9	0.4	0.8	1.3	0.3	0.4	0.9	1.1	0.9	0.6	1.7	2.4	0.7	0.7	0.8
C43 Skin-Melanoma	0.0	0.0	0.0	0.0	0.0	0.2	0.2	0.0	0.0	0.4	0.0	1.1	0.0	0.6	0.8	2.4	0.1	0.2	0.2
C44 Skin-others	0.0	0.0	0.1	0.0	0.3	0.0	0.1	0.3	0.5	1.2	1.6	2.9	2.7	5.4	4.2	14.7	0.7	1.0	1.3
C48 Retroperitoneum	0.0	0.0	0.0	0.0	0.0	0.0	0.0	0.0	0.2	0.0	0.2	0.4	1.8	0.0	1.7	0.0	0.1	0.1	0.3
C49 Conn.&Soft Tissue	0.3	0.1	0.2	0.5	0.7	0.9	0.6	1.1	1.7	0.4	1.9	3.6	3.1	10.1	6.8	8.2	1.1	1.4	1.8
C50 Breast	0.0	0.0	0.0	0.0	0.0	0.0	0.1	0.3	0.8	0.8	1.4	4.0	4.9	4.8	4.2	3.3	0.6	0.8	1.7
C60 Penis	0.0	0.0	0.0	0.0	0.1	0.0	0.2	0.7	1.2	0.8	2.1	0.4	4.9	4.8	8.5	8.2	0.7	1.0	1.5
C61 Prostate	0.0	0.0	0.0	0.1	0.1	0.1	0.0	0.1	0.2	0.8	1.4	5.4	13.7	38.2	71.9	143.5	3.8	6.4	2.9
C62 Testis	0.1	0.0	0.2	0.0	0.3	0.8	0.9	1.4	0.6	0.2	0.9	0.4	1.3	3.0	0.8	3.3	0.6	0.6	0.8
C63 Oth Male Genital	0.0	0.0	0.0	0.0	0.0	0.0	0.0	0.0	0.0	0.2	0.5	0.0	0.0	0.0	0.0	0.0	0.0	0.0	0.1
C64-65 Kidney	0.7	0.1	0.1	0.1	0.0	0.5	0.4	0.9	0.9	1.0	4.4	4.7	6.2	9.0	11.0	15.5	1.3	1.8	2.7
C66-68 U.Bladder	0.0	0.0	0.0	0.0	0.0	0.1	0.6	0.7	1.1	3.3	4.0	5.0	13.7	18.5	38.0	35.9	2.1	3.3	4.0
C69 Eye	0.8	0.1	0.0	0.0	0.0	0.0	0.0	0.0	0.0	0.0	0.0	0.4	0.4	0.0	0.0	0.0	0.1	0.1	0.1
C70-72 Brain	0.8	1.9	1.5	0.9	1.3	1.5	1.7	2.5	4.6	6.2	6.0	7.5	12.9	11.3	10.1	13.9	2.9	3.6	6.2
C73 Thyroid	0.0	0.0	0.0	0.0	0.3	0.1	0.3	0.7	0.6	1.5	0.9	1.8	3.1	3.6	3.4	2.4	0.5	0.7	1.3
C74-75 Oth.Endo.Gland	0.8	0.1	0.0	0.0	0.1	0.0	0.0	0.0	0.0	0.2	0.2	0.0	0.9	0.0	0.0	0.8	0.1	0.2	0.2
C76 Ill Diff sites	0.0	0.0	0.0	0.0	0.0	0.0	0.0	0.1	0.0	0.6	0.0	0.0	0.4	1.8	0.8	1.6	0.1	0.2	0.2
C77 Sec.Lymphnodes	0.0	0.0	0.0	0.0	0.1	0.0	0.1	0.4	0.2	0.6	2.1	1.1	4.9	3.0	2.5	8.2	0.5	0.7	1.3
C78 Sec.Res.& Dig.Sys	0.0	0.0	0.0	0.0	0.1	0.0	0.2	0.3	0.3	0.4	1.2	1.1	3.1	3.6	5.9	7.3	0.4	0.7	0.9
C79 Sec.Others	0.0	0.0	0.0	0.0	0.0	0.0	0.0	0.0	0.3	0.6	0.5	0.7	2.7	1.8	3.4	0.8	0.2	0.3	0.7
C80 Prim Unk	0.3	0.0	0.0	0.2	0.2	0.2	0.7	1.4	0.8	2.7	4.6	6.1	8.4	18.5	22.0	27.7	1.9	2.8	3.6
C81 Hodgkin Lymphoma	0.0	0.0	0.6	0.6	0.4	0.6	0.9	0.9	0.8	1.0	1.4	0.7	0.9	4.8	5.1	0.8	0.7	0.8	0.9
C82-85 NH Lymphoma	0.1	0.2	0.5	0.3	0.3	0.7	1.2	2.0	3.1	3.9	6.3	10.1	16.4	20.3	20.3	29.3	2.7	3.8	6.1
C90 Mult-Myeloma	0.0	0.0	0.0	0.0	0.0	0.1	0.0	0.4	0.5	1.9	2.3	3.6	4.9	3.0	5.1	12.2	0.7	1.1	2.0
C91 Leuk-Lymphoid	1.6	1.8	1.4	1.7	0.9	0.0	0.7	0.4	0.5	0.8	1.2	1.1	3.1	3.0	1.7	4.9	1.2	1.3	1.0
C92 Leuk-Myeloid	0.1	0.2	0.5	0.8	0.9	0.6	0.4	1.1	1.1	2.3	1.6	3.6	3.1	4.8	8.5	9.8	1.1	1.4	2.0
C95 Leuk-Unsp	0.4	0.2	0.4	0.2	0.3	0.2	0.1	0.1	0.3	0.0	0.9	1.1	0.0	1.2	1.7	3.3	0.4	0.4	0.4
Total All Sites	6.7	5.3	6.9	7.3	9.5	11.0	18.7	35.0	50.9	81.4	149.4	207.7	341.3	459.7	557.9	728.8	58.6	84.4	127.3

Table 10: Average Annual Age-Specific, World Age Adjusted, Truncated (35-64) Incidence Rates of Cancer Cases per 100,000 Persons, Poona City, 2001-05 Female

ICD 10	0	5	10	15	20	25	30	35	40	45	50	55	60	65	70	75	CR	AAR	TR
C00 Lip	0.0	0.0	0.0	0.0	0.0	0.0	0.1	0.4	0.5	0.2	0.0	0.4	2.6	1.5	2.4	2.3	0.2	0.3	0.6
C01-02 Tongue	0.0	0.0	0.0	0.0	0.1	0.4	0.8	0.5	0.7	2.3	7.9	3.9	9.5	9.7	6.3	6.1	1.4	1.8	3.7
C03 Gum	0.0	0.0	0.0	0.0	0.0	0.1	0.3	0.4	0.5	2.7	6.2	7.1	7.8	5.6	10.2	4.5	1.3	1.6	3.6
C04-06 Other Mouth	0.0	0.0	0.0	0.1	0.1	0.2	0.8	2.6	3.5	4.6	6.2	11.0	18.1	10.2	15.7	13.6	2.3	3.1	6.8
C07-08 Salivary Gland	0.0	0.1	0.0	0.1	0.2	0.1	0.1	0.3	0.4	0.8	0.3	0.8	1.3	1.0	2.4	1.5	0.3	0.3	0.6
C09-10 Oropharynx	0.0	0.0	0.0	0.0	0.0	0.0	0.1	0.1	0.2	0.2	1.7	0.8	0.0	2.0	0.8	1.5	0.2	0.3	0.5
C11 Nasopharynx	0.0	0.0	0.1	0.0	0.1	0.1	0.1	0.0	0.0	0.2	0.8	0.0	0.4	1.0	3.1	1.5	0.2	0.2	0.2
C12-13 Hypopharynx	0.0	0.0	0.0	0.0	0.0	0.0	0.4	1.2	1.6	1.0	1.4	4.7	2.6	4.6	3.9	2.3	0.7	0.9	1.9
C14 Pharynx	0.0	0.0	0.0	0.0	0.0	0.0	0.0	0.1	0.2	0.4	0.3	0.0	0.9	1.0	1.6	1.5	0.1	0.2	0.3
C15 Oesophagus	0.0	0.0	0.0	0.0	0.0	0.1	0.9	1.9	2.6	2.7	7.1	13.0	14.2	24.1	40.0	43.9	3.2	4.3	6.0
C16 Stomach	0.0	0.0	0.0	0.0	0.0	0.0	0.3	1.4	1.8	1.5	4.0	5.9	6.0	11.3	17.2	16.7	1.5	2.0	3.1
C17 Small Intestine	0.0	0.0	0.0	0.0	0.0	0.0	0.0	0.3	0.4	0.0	0.6	0.8	0.4	0.0	0.0	3.8	0.1	0.2	0.4
C18 Colon	0.0	0.0	0.0	0.1	0.2	0.3	0.5	0.4	0.5	3.1	4.0	4.3	13.8	11.3	11.8	22.7	1.8	2.3	3.8
C19-21 Rectum	0.0	0.0	0.1	0.0	0.3	0.2	0.5	1.0	1.3	1.9	4.8	6.7	10.3	12.8	13.3	12.9	1.6	2.2	3.8
C22 Liver	0.5	0.0	0.0	0.0	0.1	0.2	0.3	1.0	1.3	1.9	3.1	3.9	5.2	8.2	7.8	20.4	1.3	1.7	2.5
C23-24 Gall Bladder,Bile	0.0	0.0	0.0	0.0	0.0	0.0	0.0	0.8	1.1	0.6	5.1	2.8	4.7	4.6	5.5	9.8	0.8	1.2	2.3
C25 Pancreas	0.0	0.0	0.1	0.0	0.2	0.2	0.0	0.7	0.9	0.4	1.7	1.6	4.7	7.7	10.2	9.8	0.8	1.1	1.5
C26 Other Digest	0.0	0.0	0.0	0.0	0.0	0.0	0.1	0.0	0.0	0.0	0.0	0.4	0.0	0.0	2.4	1.5	0.1	0.1	0.1
C30-31 Nose, sinuse	0.0	0.0	0.0	0.0	0.0	0.1	0.1	0.8	1.1	0.2	1.1	1.2	1.7	2.0	3.1	4.5	0.4	0.5	1.0
C32 Larynx	0.0	0.0	0.0	0.0	0.0	0.0	0.1	0.4	0.5	1.5	1.7	1.2	3.0	2.6	4.7	9.1	0.6	0.8	1.3
C33-34 Lung	0.0	0.0	0.1	0.0	0.2	0.4	1.0	2.2	2.9	4.6	5.9	7.9	10.8	20.0	22.7	23.5	2.5	3.3	5.2
C37-38 Mediast.,plura	0.0	0.0	0.0	0.0	0.0	0.0	0.0	0.0	0.0	0.6	0.6	0.0	0.4	1.0	2.4	0.8	0.1	0.2	0.3
C40-41 Bone	0.0	0.1	0.2	1.4	0.5	0.4	0.5	0.5	0.7	0.4	0.8	2.0	0.4	2.0	2.4	3.8	0.7	0.7	0.8
C43 Skin-Melanoma	0.0	0.0	0.0	0.0	0.0	0.0	0.1	0.0	0.0	0.6	0.6	0.0	1.3	2.6	0.0	0.8	0.2	0.2	0.4
C44 Skin-others	0.0	0.0	0.0	0.0	0.1	0.1	0.5	0.5	0.7	1.3	2.3	2.0	4.7	4.6	4.7	7.6	0.7	1.0	1.7
C48 Retroperitoneum	0.0	0.0	0.0	0.0	0.1	0.1	0.0	0.1	0.2	0.6	0.3	1.2	1.3	0.5	4.7	3.8	0.3	0.4	0.5
C49 Conn.&Soft Tissue	0.6	0.1	0.3	0.7	0.3	0.4	0.6	1.8	2.4	1.7	3.1	3.9	4.3	2.0	4.7	3.0	1.1	1.3	2.7
C50 Breast	0.1	0.1	0.0	0.3	1.1	2.6	8.2	27.3	36.5	52.5	74.7	81.1	83.2	83.4	94.9	96.9	19.0	24.5	55.7
C51-52 Oth Fem Genital	0.0	0.0	0.0	0.0	0.0	0.0	0.1	0.5	0.7	1.0	3.7	2.0	2.6	6.1	7.8	8.3	0.8	1.0	1.6
C53 Cervix	0.0	0.1	0.0	0.1	0.1	1.7	5.0	15.9	21.3	34.4	40.2	53.2	63.8	51.7	54.9	46.9	11.6	15.0	35.4
C54 Corpus Uteri	0.0	0.0	0.0	0.1	0.0	0.1	0.0	1.0	1.3	2.3	5.7	9.4	9.5	10.2	14.9	7.6	1.5	2.1	4.2
C55 Uterus	0.0	0.0	0.0	0.0	0.0	0.0	0.0	0.4	0.5	0.4	0.3	2.0	0.0	5.1	5.5	3.0	0.4	0.5	0.6
C56 Ovary	0.0	0.1	0.0	0.3	1.0	1.1	1.3	5.3	7.1	10.4	19.5	20.5	26.7	23.0	34.5	23.5	4.9	6.4	13.7
C58 Placenta	0.0	0.0	0.0	0.0	0.1	0.1	0.0	0.0	0.0	0.0	0.0	0.0	0.0	0.0	0.0	0.0	0.0	0.0	0.0
C64-65 Kidney	0.7	0.1	0.0	0.1	0.0	0.1	0.1	0.3	0.4	0.6	2.0	4.3	1.3	6.1	3.1	4.5	0.6	0.9	1.3
C66-68 U.Bladder	0.0	0.0	0.0	0.0	0.0	0.0	0.3	0.1	0.2	1.3	0.8	2.0	2.2	3.1	6.3	9.1	0.5	0.7	1.0
C69 Eye	0.4	0.0	0.0	0.0	0.0	0.1	0.0	0.0	0.0	0.0	0.0	0.0	0.0	0.0	0.0	0.0	0.1	0.1	0.0
C70-72 Brain	0.6	1.0	1.0	0.9	0.6	1.4	1.3	2.2	2.9	3.1	4.2	7.1	9.9	5.6	8.6	6.8	2.1	2.4	4.5
C73 Thyroid	0.0	0.0	0.0	0.0	0.8	0.5	1.0	0.5	0.7	1.0	1.7	3.5	3.4	7.2	7.8	4.5	0.9	1.1	1.6
C74-75 Oth.Endo.Gland	0.6	0.1	0.0	0.0	0.1	0.0	0.0	0.1	0.2	0.2	0.0	0.4	0.0	0.0	0.8	0.0	0.1	0.2	0.2
C76 Ill Diff sites	0.0	0.0	0.1	0.0	0.0	0.1	0.0	0.1	0.2	0.4	0.6	0.8	0.9	0.0	0.0	2.3	0.2	0.2	0.4
C77 Sec.Lymphnodes	0.0	0.0	0.0	0.0	0.0	0.1	0.1	0.4	0.5	0.8	2.0	1.2	0.9	1.5	0.8	2.3	0.3	0.4	0.9
C78 Sec.Res.&Dig.Sys	0.0	0.0	0.0	0.0	0.1	0.2	0.0	0.4	0.5	0.6	0.6	1.6	0.4	1.0	2.4	5.3	0.3	0.4	0.7
C79 Sec.Others	0.0	0.0	0.0	0.0	0.0	0.0	0.3	0.1	0.2	0.8	0.6	0.8	1.7	2.6	0.0	1.5	0.2	0.3	0.6
C80 Prim Unk	0.0	0.0	0.0	0.1	0.2	0.2	0.1	1.0	1.3	2.9	4.2	4.7	8.6	7.7	11.0	18.2	1.5	1.9	3.4
C81 Hodgkin Lymphoma	0.1	0.1	0.3	0.5	0.3	0.3	0.3	0.1	0.2	0.2	0.8	1.2	1.3	1.5	0.8	0.8	0.4	0.4	0.6
C82-85 NH.Lymphoma	0.0	0.1	0.3	0.1	0.2	0.3	1.1	1.8	2.4	2.7	4.2	3.9	9.1	12.3	13.3	18.2	1.8	2.3	3.7
C90 Mult-Myeloma	0.0	0.0	0.0	0.0	0.0	0.0	0.0	0.1	0.2	0.6	1.4	2.8	2.6	3.1	5.5	4.5	0.5	0.6	1.1
C91 Leuk-Lymphoid	1.4	1.3	0.9	1.1	0.0	0.2	0.3	0.4	0.5	0.4	0.0	0.0	0.4	1.0	2.4	3.0	0.7	0.8	0.3
C92 Leuk-Myeloid	0.2	0.4	0.6	0.7	0.6	0.4	0.6	0.5	0.7	1.7	1.4	1.6	2.2	4.1	4.7	6.1	1.0	1.0	1.3
C95 Leuk-Unsp	0.2	0.5	0.3	0.1	0.0	0.0	0.4	0.0	0.0	0.0	0.8	0.4	0.0	0.5	0.8	0.8	0.3	0.2	0.2
Total All Sites	5.6	4.4	4.6	6.9	7.6	13.1	28.5	78.4	104.8	154.7	241.0	291.8	361.2	391.1	484.6	507.2	74.0	95.5	188.2

Table11: Incident Cases of Cancer by Most Valid Basis of Diagnosis and Site (ICD-10) with Percentages, Poona Coty, 2001-05, Male.

ICD-10	Microscopic		Clin. Invest		Clinical		DCO		Total	
	#	%	#	%	#	%	#	%	#	%
C00 Lip	36	92.3	0	0.0	3	7.7	0	0.0	39	100.0
C01-02 Tongue	212	96.4	0	0.0	5	2.3	3	1.4	220	100.0
C03 Gum	172	95.0	1	0.6	3	1.7	5	2.8	181	100.0
C04-06 Other Mouth	311	93.7	2	0.6	12	3.6	7	2.1	332	100.0
C07-08 Salivary Gland	35	97.2	0	0.0	1	2.8	0	0.0	36	100.0
C09-10 Oropharynx	65	92.9	1	1.4	2	2.9	2	2.9	70	100.0
C11 Nasopharynx	36	85.7	1	2.4	2	4.8	3	7.1	42	100.0
C12-13 Hypopharynx	136	95.8	0	0.0	5	3.5	1	0.7	142	100.0
C14 Pharynx	9	34.6	0	0.0	4	15.4	13	50.0	26	100.0
C15 Oesophagus	300	83.1	6	1.7	21	5.8	34	9.4	361	100.0
C16 Stomach	223	81.7	2	0.7	19	7.0	29	10.6	273	100.0
C17 Small Intenstine	7	70.0	0	0.0	1	10.0	2	20.0	10	100.0
C18 Colon	179	86.5	2	1.0	9	4.3	17	8.2	207	100.0
C19-21 Rectum	198	88.8	1	0.4	9	4.0	15	6.7	223	100.0
C22 Liver	239	90.2	3	1.1	1	0.4	22	8.3	265	100.0
C23-24 Gall Bladder,Bile	55	80.9	3	4.4	4	5.9	6	8.8	68	100.0
C25 Pancreas	103	79.2	6	4.6	10	7.7	11	8.5	130	100.0
C26 Other Digest	7	46.7	1	6.7	2	13.3	5	33.3	15	100.0
C30-31 Nose, sinuse	63	96.9	0	0.0	2	3.1	0	0.0	65	100.0
C32 Larynx	300	89.3	6	1.8	15	4.5	15	4.5	336	100.0
C33-34 Lung	305	81.8	6	1.6	34	9.1	28	7.5	373	100.0
C37-38 Mediast.,plura	16	76.2	2	9.5	3	14.3	0	0.0	21	100.0
C39 Respir.Tract	0	0.0	0	0.0	0	0.0	1	100.0	1	100.0
C40-41 Bone	69	95.8	0	0.0	2	2.8	1	1.4	72	100.0
C43 Skin-Melanoma	13	92.9	0	0.0	0	0.0	1	7.1	14	100.0
C44 Skin-others	72	100.0	0	0.0	0	0.0	0	0.0	72	100.0
C48 Retroperitoneum	9	100.0	0	0.0	0	0.0	0	0.0	9	100.0
C49 Conn.&Soft Tissue	116	100.0	0	0.0	0	0.0	0	0.0	116	100.0
C50 Breast	50	84.7	0	0.0	6	10.2	3	5.1	59	100.0
C60 Penis	62	89.9	1	1.4	2	2.9	4	5.8	69	100.0
C61 Prostate	333	85.8	2	0.5	21	5.4	32	8.2	388	100.0
C62 Testis	56	93.3	3	5.0	0	0.0	1	1.7	60	100.0
C63 Oth Male Gen	3	100.0	0	0.0	0	0.0	0	0.0	3	100.0
C64-65 Kidney	128	97.0	1	0.8	0	0.0	3	2.3	132	100.0
C66-68 U.Bladder	197	90.4	4	1.8	6	2.8	11	5.0	218	100.0
C69 Eye	9	90.0	0	0.0	1	10.0	0	0.0	10	100.0
C70-72 Brain	292	96.1	0	0.0	5	1.6	7	2.3	304	100.0
C73 Thyroid	52	96.3	1	1.9	1	1.9	0	0.0	54	100.0
C74-75 Oth.Endo.Gland	14	100.0	0	0.0	0	0.0	0	0.0	14	100.0
C76 Ill Diff sites	8	72.7	0	0.0	1	9.1	2	18.2	11	100.0
C77 Sec.Lymphnodes	48	94.1	0	0.0	2	3.9	1	2.0	51	100.0
C78 Sec.Res.& Dig.Sys	25	54.3	2	4.3	15	32.6	4	8.7	46	100.0
C79 Sec.Others	10	43.5	0	0.0	9	39.1	4	17.4	23	100.0
C80 Prim Unk	118	60.5	5	2.6	49	25.1	23	11.8	195	100.0
C81 Hodgkin Lymphoma	74	100.0	0	0.0	0	0.0	0	0.0	74	100.0
C82-85 N.H.Lymphoma	276	100.0	0	0.0	0	0.0	0	0.0	276	100.0
C90 Mult-Myeloma	75	100.0	0	0.0	0	0.0	0	0.0	75	100.0
C91 Leuk-Lymphoid	122	100.0	0	0.0	0	0.0	0	0.0	122	100.0
C92 Leuk-Myeloid	118	100.0	0	0.0	0	0.0	0	0.0	118	100.0
C95 Leuk-Unsp	37	100.0	0	0.0	0	0.0	0	0.0	37	100.0
Total All Sites	5393	89.0	62	1.0	287	4.7	316	5.2	6058	100.0

Table12: Incident Cases of Cancer by Most Valid Basis of Diagnosis and Site (ICD-10) with Percentages, Poona Coty, 2001-05, Female.

ICD10	Microscopic		Clin.Invest.		Clinical		DCO		Total	
	#	%	#	%	#	%	#	%	#	%
C00 Lip	23	100.0	0	0.0	0	0.0	0	0.0	23	100.0
C01-02 Tongue	127	96.9	1	0.8	0	0.0	3	2.3	131	100.0
C03 Gum	110	94.0	0	0.0	5	4.3	2	1.7	117	100.0
C04-06 Other Mouth	202	95.7	0	0.0	1	0.5	8	3.8	211	100.0
C07-08 Salivary Gland	22	84.6	0	0.0	2	7.7	2	7.7	26	100.0
C09-10 Oropharynx	19	100.0	0	0.0	0	0.0	0	0.0	19	100.0
C11 Nasopharynx	16	94.1	0	0.0	0	0.0	1	5.9	17	100.0
C12-13 Hypopharynx	60	96.8	0	0.0	1	1.6	1	1.6	62	100.0
C14 Pharynx	10	76.9	0	0.0	1	7.7	2	15.4	13	100.0
C15 Oesophagus	225	76.5	4	1.4	13	4.4	52	17.7	294	100.0
C16 Stomach	106	78.5	3	2.2	7	5.2	19	14.1	135	100.0
C17 Small Intenstine	11	84.6	0	0.0	0	0.0	2	15.4	13	100.0
C18 Colon	143	86.1	1	0.6	7	4.2	15	9.0	166	100.0
C19-21 Rectum	139	91.4	4	2.6	2	1.3	7	4.6	152	100.0
C22 Liver	96	82.1	0	0.0	3	2.6	18	15.4	117	100.0
C23-24 Gall Bladder,Bile	62	81.6	4	5.3	3	3.9	7	9.2	76	100.0
C25 Pancreas	64	84.2	1	1.3	3	3.9	8	10.5	76	100.0
C26 Other Digest	7	100.0	0	0.0	0	0.0	0	0.0	7	100.0
C30-31 Nose, sinuse	36	92.3	0	0.0	1	2.6	2	5.1	39	100.0
C32 Larynx	44	83.0	0	0.0	2	3.8	7	13.2	53	100.0
C33-34 Lung	177	77.0	4	1.7	16	7.0	33	14.3	230	100.0
C37-38 Mediast.,plura	9	75.0	0	0.0	2	16.7	1	8.3	12	100.0
C40-41 Bone	53	85.5	0	0.0	4	6.5	5	8.1	62	100.0
C43 Skin-Melanoma	16	100.0	0	0.0	0	0.0	0	0.0	16	100.0
C44 Skin-others	68	98.6	0	0.0	0	0.0	1	1.4	69	100.0
C48 Retroperitoneum	22	81.5	1	3.7	3	11.1	1	3.7	27	100.0
C49 Conn.&Soft Tissue	103	100.0	0	0.0	0	0.0	0	0.0	103	100.0
C50 Breast	1628	92.3	17	1.0	41	2.3	78	4.4	1764	100.0
C51-52 Oth Fem Gen	70	95.9	0	0.0	2	2.7	1	1.4	73	100.0
C53 Cervix	1020	94.8	6	0.6	17	1.6	33	3.1	1076	100.0
C54 Corpus Uteri	137	95.1	1	0.7	3	2.1	3	2.1	144	100.0
C55 Uterus	14	42.4	0	0.0	1	3.0	18	54.5	33	100.0
C56 Ovary	385	84.1	5	1.1	30	6.6	38	8.3	458	100.0
C58 Placenta	3	100.0	0	0.0	0	0.0	0	0.0	3	100.0
C64-65 Kidney	60	100.0	0	0.0	0	0.0	0	0.0	60	100.0
C66-68 U.Bladder	42	87.5	1	2.1	1	2.1	4	8.3	48	100.0
C69 Eye	5	100.0	0	0.0	0	0.0	0	0.0	5	100.0
C70-72 Brain	183	95.3	0	0.0	6	3.1	3	1.6	192	100.0
C73 Thyroid	83	94.3	1	1.1	1	1.1	3	3.4	88	100.0
C74-75 Oth.Endo.Gland	12	92.3	0	0.0	1	7.7	0	0.0	13	100.0
C76 Ill Diff sites	9	60.0	0	0.0	2	13.3	4	26.7	15	100.0
C77 Sec.Lymphnodes	25	89.3	1	3.6	0	0.0	2	7.1	28	100.0
C78 Sec.Res.& Dig.Sys	14	46.7	3	10.0	10	33.3	3	10.0	30	100.0
C79 Sec.Others	14	60.9	0	0.0	9	39.1	0	0.0	23	100.0
C80 Prim Unk	70	51.9	4	3.0	42	31.1	19	14.1	135	100.0
C81 Hodgkin Lymphoma	36	100.0	0	0.0	0	0.0	0	0.0	36	100.0
C82-85 N.H.Lymphoma	170	100.0	0	0.0	0	0.0	0	0.0	170	100.0
C90 Mult-Myeloma	47	100.0	0	0.0	0	0.0	0	0.0	47	100.0
C91 Leuk-Lymphoid	62	100.0	0	0.0	0	0.0	0	0.0	62	100.0
C92 Leuk-Myeloid	91	100.0	0	0.0	0	0.0	0	0.0	91	100.0
C95 Leuk-Unsp	27	100.0	0	0.0	0	0.0	0	0.0	27	100.0
Total All Sites	6177	89.7	62	0.9	242	3.5	406	5.9	6887	100.0

Table 13: Incident Cases of Cancer by Religion and site (ICD-10) with parentages, Poona City, 2002-04, Male.

ICD10	Hindu		Muslim		Christian		Others		Total	
	#	%	#	%	#	%	#	%	#	%
C00 Lip	32	0.4	2	0.2	1	0.4	4	0.4	39	0.4
C01-02 Tongue	181	2.2	31	3.4	2	0.7	6	0.7	220	2.1
C03 Gum	153	1.9	7	0.8	2	0.7	19	2.1	181	1.8
C04-06 Other Mouth	277	3.4	31	3.4	5	1.8	19	2.1	332	3.2
C07-08 Salivary Gland	28	0.3	5	0.5	1	0.4	2	0.2	36	0.3
C09-10 Oropharynx	57	0.7	9	1.0	3	1.1	1	0.1	70	0.7
C11 Nasopharynx	36	0.4	2	0.2	1	0.4	3	0.3	42	0.4
C12-13 Hypopharynx	119	1.4	11	1.2	4	1.5	8	0.9	142	1.4
C14 Pharynx	22	0.3	3	0.3	1	0.4	0	0.0	26	0.3
C15 Oesophagus	313	3.8	29	3.2	3	1.1	16	1.8	361	3.5
C16 Stomach	241	2.9	18	2.0	6	2.2	8	0.9	273	2.6
C17 Small Intestine	9	0.1	0	0.0	0	0.0	1	0.1	10	0.1
C18 Colon	179	2.2	15	1.6	6	2.2	7	0.8	207	2.0
C19-21 Rectum	195	2.4	13	1.4	5	1.8	10	1.1	223	2.2
C22 Liver	226	2.7	20	2.2	7	2.6	12	1.3	265	2.6
C23-24 Gall Bladder,Bile	52	0.6	7	0.8	1	0.4	8	0.9	68	0.7
C25 Pancreas	109	1.3	10	1.1	3	1.1	8	0.9	130	1.3
C26 Other Digest	13	0.2	0	0.0	1	0.4	1	0.1	15	0.1
C30-31 Nose, sinuse	53	0.6	4	0.4	2	0.7	6	0.7	65	0.6
C32 Larynx	275	3.3	31	3.4	10	3.7	20	2.2	336	3.2
C33-34 Lung	306	3.7	37	4.0	12	4.4	18	2.0	373	3.6
C37-38 Mediast.,plura	18	0.2	2	0.2	0	0.0	1	0.1	21	0.2
C39 Respir.Tract	0	0.0	0	0.0	1	0.4	0	0.0	1	0.0
C40-41 Bone	56	0.7	10	1.1	1	0.4	5	0.6	72	0.7
C43 Skin-Melanoma	13	0.2	0	0.0	0	0.0	1	0.1	14	0.1
C44 Skin-others	60	0.7	3	0.3	2	0.7	7	0.8	72	0.7
C48 Retroperitoneum	7	0.1	2	0.2	0	0.0	0	0.0	9	0.1
C49 Conn.&Soft Tissue	105	1.3	5	0.5	0	0.0	6	0.7	116	1.1
C50 Breast	42	0.5	11	1.2	4	1.5	2	0.2	59	0.6
C60 Penis	62	0.8	1	0.1	1	0.4	5	0.6	69	0.7
C61 Prostate	332	4.0	27	2.9	13	4.8	16	1.8	388	3.8
C62 Testis	51	0.6	2	0.2	1	0.4	6	0.7	60	0.6
C63 Oth Male Genital	3	0.0	0	0.0	0	0.0	0	0.0	3	0.0
C64-65 Kidney	114	1.4	9	1.0	4	1.5	5	0.6	132	1.3
C66-68 U.Bladder	177	2.1	22	2.4	10	3.7	9	1.0	218	2.1
C69 Eye	8	0.1	2	0.2	0	0.0	0	0.0	10	0.1
C70-72 Brain	263	3.2	22	2.4	7	2.6	12	1.3	304	2.9
C73 Thyroid	42	0.5	9	1.0	2	0.7	1	0.1	54	0.5
C74-75 Oth.Endo.Gland	13	0.2	0	0.0	0	0.0	1	0.1	14	0.1
C76 Ill Diff sites	9	0.1	2	0.2	0	0.0	0	0.0	11	0.1
C77 Sec.Lymphnodes	42	0.5	6	0.7	1	0.4	2	0.2	51	0.5
C78 Sec.Res.& Dig.Sys	38	0.5	4	0.4	1	0.4	3	0.3	46	0.4
C79 Sec.Others	20	0.2	3	0.3	0	0.0	0	0.0	23	0.2
C80 Prim Unk	155	1.9	24	2.6	8	2.9	8	0.9	195	1.9
C81 Hodgkin Lymphoma	58	0.7	12	1.3	1	0.4	3	0.3	74	0.7
C82-85 N.H.Lymphoma	236	2.9	16	1.7	9	3.3	15	1.7	276	2.7
C90 Mult-Myeloma	63	0.8	4	0.4	4	1.5	4	0.4	75	0.7
C91 Leuk-Lymphoid	99	1.2	10	1.1	4	1.5	9	1.0	122	1.2
C92 Leuk-Myeloid	101	1.2	12	1.3	2	0.7	3	0.3	118	1.1
C95 Leuk-Unsp	31	0.4	4	0.4	0	0.0	2	0.2	37	0.4
Total All Sites	5094	61.8	509	55.4	152	55.7	303	33.4	6058	58.6

Table 14: Incident Cases of Cancer by Religion and site (ICD-10) with parentages, Poona City, 2002-04, Female.

ICD10	Hindu		Muslims		Christians		Others		Total	
	#	%	#	%	#	%	#	%	#	%
C00 Lip	20	0.3	1	0.1	1	0.4	1	0.1	23	0.2
C01-02 Tongue	106	1.4	8	1.0	4	1.7	13	1.6	131	1.4
C03 Gum	105	1.4	2	0.2	2	0.9	8	1.0	117	1.3
C04-06 Other Mouth	176	2.4	18	2.2	2	0.9	15	1.9	211	2.3
C07-08 Salivary Gland	17	0.2	2	0.2	3	1.3	4	0.5	26	0.3
C09-10 Oropharynx	17	0.2	1	0.1	1	0.4	0	0.0	19	0.2
C11 Nasopharynx	14	0.2	3	0.4	0	0.0	0	0.0	17	0.2
C12-13 Hypopharynx	52	0.7	7	0.8	0	0.0	3	0.4	62	0.7
C14 Pharynx	13	0.2	0	0.0	0	0.0	0	0.0	13	0.1
C15 Oesophagus	269	3.6	12	1.4	0	0.0	13	1.6	294	3.2
C16 Stomach	119	1.6	7	0.8	2	0.9	7	0.9	135	1.5
C17 Small Intestine	10	0.1	3	0.4	0	0.0	0	0.0	13	0.1
C18 Colon	129	1.7	22	2.7	5	2.1	10	1.2	166	1.8
C19-21 Rectum	128	1.7	12	1.4	5	2.1	7	0.9	152	1.6
C22 Liver	101	1.4	8	1.0	3	1.3	5	0.6	117	1.3
C23-24 Gall Bladder,Bile	62	0.8	11	1.3	0	0.0	3	0.4	76	0.8
C25 Pancreas	66	0.9	3	0.4	3	1.3	4	0.5	76	0.8
C26 Other Digest	6	0.1	1	0.1	0	0.0	0	0.0	7	0.1
C30-31 Nose, sinuse	34	0.5	3	0.4	1	0.4	1	0.1	39	0.4
C32 Larynx	39	0.5	8	1.0	2	0.9	4	0.5	53	0.6
C33-34 Lung	196	2.6	19	2.3	4	1.7	11	1.4	230	2.5
C37-38 Mediast.,plura	10	0.1	1	0.1	1	0.4	0	0.0	12	0.1
C40-41 Bone	47	0.6	13	1.6	0	0.0	2	0.2	62	0.7
C43 Skin-Melanoma	16	0.2	0	0.0	0	0.0	0	0.0	16	0.2
C44 Skin-others	65	0.9	3	0.4	0	0.0	1	0.1	69	0.7
C48 Retroperitoneum	22	0.3	4	0.5	1	0.4	0	0.0	27	0.3
C49 Conn.&Soft Tissue	84	1.1	13	1.6	2	0.9	4	0.5	103	1.1
C50 Breast	1512	20.3	120	14.5	53	22.7	79	9.9	1764	19.0
C51-52Oth Fem Genital	64	0.9	4	0.5	0	0.0	5	0.6	73	0.8
C53 Cervix	956	12.8	45	5.4	17	7.3	58	7.2	1076	11.6
C54 Corpus Uteri	123	1.7	9	1.1	4	1.7	8	1.0	144	1.5
C55 Uterus	26	0.3	3	0.4	3	1.3	1	0.1	33	0.4
C56 Ovary	392	5.3	31	3.7	16	6.8	19	2.4	458	4.9
C58 Placenta	3	0.0	0	0.0	0	0.0	0	0.0	3	0.0
C64-65 Kidney	55	0.7	4	0.5	0	0.0	1	0.1	60	0.6
C66-68 U.Bladder	43	0.6	2	0.2	2	0.9	1	0.1	48	0.5
C69 Eye	5	0.1	0	0.0	0	0.0	0	0.0	5	0.1
C70-72 Brain	165	2.2	12	1.4	9	3.9	6	0.7	192	2.1
C73 Thyroid	73	1.0	9	1.1	3	1.3	3	0.4	88	0.9
C74-75 Oth.Endo.Gland	10	0.1	1	0.1	1	0.4	1	0.1	13	0.1
C76 Ill Diff sites	13	0.2	2	0.2	0	0.0	0	0.0	15	0.2
C77 Sec.Lymphnodes	21	0.3	4	0.5	1	0.4	2	0.2	28	0.3
C78 Sec.Res.& Dig.Sys	23	0.3	3	0.4	1	0.4	3	0.4	30	0.3
C79 Sec.Others	20	0.3	2	0.2	0	0.0	1	0.1	23	0.2
C80 Prim Unk	116	1.6	6	0.7	3	1.3	10	1.2	135	1.5
C81 Hodgkin Lymphoma	25	0.3	6	0.7	2	0.9	3	0.4	36	0.4
C82-85 N.H.Lymphoma	136	1.8	20	2.4	10	4.3	4	0.5	170	1.8
C90 Mult-Myeloma	41	0.6	0	0.0	4	1.7	2	0.2	47	0.5
C91 Leuk-Lymphoid	54	0.7	3	0.4	2	0.9	3	0.4	62	0.7
C92 Leuk-Myeloid	78	1.0	8	1.0	1	0.4	4	0.5	91	1.0
C95 Leuk-Unsp	18	0.2	7	0.8	1	0.4	1	0.1	27	0.3
Total All Sites	5895	79.2	486	58.7	175	74.9	331	41.3	6887	74.0

Table 15: Number of Histologically proved Incident cases of Cancer by Sex with Percentages, 2001-05, Poona City.

Histological Group	Male		Female		Total	
	#	%	#	%	#	%
800 Malignant Neoplasm	708	11.7	762	11.1	1470	11.4
801-4 Epithelial Neoplasms	339	5.6	233	3.4	572	4.4
805-8 Papillary & Squamous Cell Neoplasms	1842	30.4	1994	29.0	3836	29.6
809-11 Basal Cell Neoplasms	17	0.3	26	0.4	43	0.3
812-13 Transitional cell carcinomas	180	3.0	36	0.5	216	1.7
814-38 Adenocarcinomas	1507	24.9	1115	16.2	2622	20.3
839-42 Adnexal & Skin appendage Neoplasms	2	0.0	5	0.1	7	0.1
843 Mucoepidermoid Neoplasms	13	0.2	9	0.1	22	0.2
844-49 Cystic, Muinous & Serous Neoplasms	94	1.6	312	4.5	406	3.1
850-54 Ductal,Lobular & Medulary Neoplasms	50	0.8	1540	22.4	1590	12.3
856-58 Complex Epithelial Neoplasms	8	0.1	12	0.2	20	0.2
872-79 Nevi Melanomas	18	0.3	20	0.3	38	0.3
880 Soft Tissue Tumors & Sarcomas	54	0.9	39	0.6	93	0.7
881-83 Fibromatous	15	0.2	12	0.2	27	0.2
884 Myxomatous Neoplasms	1	0.0	0	0.0	1	0.0
885-88 Lipomatous Neoplasms	11	0.2	13	0.2	24	0.2
889-92 Myomatous Neoplasms	33	0.5	31	0.5	64	0.5
893-99 Complex mixed and stromal Neoplasms	16	0.3	17	0.2	33	0.3
900-03 Fibroepithelial Neoplasms	0	0.0	10	0.1	10	0.1
904 Synovial Neoplasms	6	0.1	5	0.1	11	0.1
905 Mesothelial Neoplasms	8	0.1	4	0.1	12	0.1
906-09 Germ Cell Neoplasms	53	0.9	10	0.1	63	0.5
910 Trophoblastic Neoplasms	0	0.0	3	0.0	3	0.0
912-16 Blood Vessel Tumors	2	0.0	4	0.1	6	0.0
918-20 Osetomas & Osteosarcomas	24	0.4	19	0.3	43	0.3
921-24 Chondromatous Neoplasms	14	0.2	11	0.2	25	0.2
925 Giant Cell Tumors	10	0.2	13	0.2	23	0.2
926 Miscellaneous bone tumors	12	0.2	8	0.1	20	0.2
927-34 Odontogenic Tumors	3	0.0	2	0.0	5	0.0
937 Miscellaneous Tumors	0	0.0	1	0.0	1	0.0
938-48 Gliomas	282	4.7	168	2.4	450	3.5
949-52 Neuroepitheliomatous neoplasms	22	0.4	13	0.2	35	0.3
953 Meningiomas	5	0.1	5	0.1	10	0.1
954-57 Nerve Sheat Tumors	5	0.1	2	0.0	7	0.1
958 Granular Cell Tumors	1	0.0	0	0.0	1	0.0
959-63 Lymphomas NOS, Diffuse	260	4.3	156	2.3	416	3.2
965-66 Hodgkins Disease	74	1.2	36	0.5	110	0.8
967-68 Mal.Lymphoma Sp.type,diffuse No	12	0.2	7	0.1	19	0.1
969 Lymphomas, Nodullar or Follicular	5	0.1	7	0.1	12	0.1
973 Plasma cell tumors	75	1.2	47	0.7	122	0.9
980 Leukemias, Nos	38	0.6	27	0.4	65	0.5
982 Lymphoid Leukemias	121	2.0	62	0.9	183	1.4
984 Erythroleukemias	0	0.0	2	0.0	2	0.0
986 Myeloid Leukemias	118	1.9	89	1.3	207	1.6
Total	6058	100.0	6887	100.0	12945	100.0

Table 16: Number of Histologically proved Incident cases of Cancer by Site group and Sex with Percentages, Poona City, 2001-05.

Site Group / Histological Group	Male		Female		Total	
	#	%	#	%	#	%
C00-C14 Lip, Oral Cavity & Pharynx						
800 Malignant Neoplasm	80	7.4	32	5.2	112	6.6
801-4 Epithelial Neoplasms	28	2.6	16	2.6	44	2.6
805-8 Papillary & Squamous Cell Neoplasm	945	86.9	548	88.5	1493	87.5
814-38 Adenocarcinomas	25	2.3	15	2.4	40	2.3
843 Mucoepidermoid Neoplasms	8	0.7	7	1.1	15	0.9
844-49 Cystic, Muinous & Serous Neoplasms	1	0.1	0	0.0	1	0.1
880 Soft Tissue Tumors & Sarcomas	1	0.1	0	0.0	1	0.1
881-83 Fibromatous	0	0.0	1	0.2	1	0.1
Total	1088	100.0	619	100.0	1707	100.0
C15-C26, C48 Digestive Organs						
805-8 Papillary & Squamous Cell Neoplasms	298	19.1	227	21.4	525	20.0
812-13 Transitional cell carcinomas	3	0.2	0	0.0	3	0.1
814-38 Adenocarcinomas	872	55.9	559	52.6	1431	54.5
844-49 Cystic, Muinous & Serous Neoplasms	87	5.6	46	4.3	133	5.1
850-54 Ductal, Lobular & Medulary Neopl	0	0.0	3	0.3	3	0.1
856-58 Complex Epithelial Neoplasms	0	0.0	1	0.1	1	0.0
881-83 Fibromatous	1	0.1	1	0.1	2	0.1
889-92 Myomatous Neoplasms	0	0.0	1	0.1	1	0.0
893-99 Complex mixed and stromal Neopl	5	0.3	4	0.4	9	0.3
Total	1561	100.0	1063	100.0	2624	100.0
C30-C39 Respiratory Systems						
800 Malignant Neoplasm	117	14.7	71	21.3	188	16.6
801-4 Epithelial Neoplasms	191	24.0	88	26.3	279	24.7
805-8 Papillary & Squamous Cell Neopla	387	48.6	99	29.6	486	43.0
814-38 Adenocarcinomas	82	10.3	70	21.0	152	13.5
843 Mucoepidermoid Neoplasms	2	0.3	0	0.0	2	0.2
844-49 Cystic, Muinous & Serous Neopla	2	0.3	2	0.6	4	0.4
850-54 Ductal, Lobular & Medulary Neopl	1	0.1	0	0.0	1	0.1
856-58 Complex Epithelial Neoplasms	7	0.9	1	0.3	8	0.7
889-92 Myomatous Neoplasms	1	0.1	0	0.0	1	0.1
905 Mesothelial Neoplasms	6	0.8	3	0.9	9	0.8
Total	796	100.0	334	100.0	1130	100.0
C40-C41, C47, C49 Bone & Connective Tissue						
800 Malignant Neoplasm	3	1.6	10	6.1	13	3.7
805-8 Papillary & Squamous Cell Neopla	3	1.6	1	0.6	4	1.1
814-38 Adenocarcinomas	2	1.1	4	2.4	6	1.7
880 Soft Tissue Tumors & Sarcomas	52	27.7	39	23.6	91	25.8
881-83 Fibromatous	12	6.4	7	4.2	19	5.4
884 Myxomatous Neoplasms	1	0.5	0	0.0	1	0.3
885-88 Lipomatous Neoplasms	10	5.3	13	7.9	23	6.5
889-92 Myomatous Neoplasms	29	15.4	29	17.6	58	16.4
904 Synovial Neoplasms	6	3.2	5	3.0	11	3.1
912-16 Blood Vessel Tumors	1	0.5	4	2.4	5	1.4
918-20 Osetomas & Osteosarcomas	24	12.8	17	10.3	41	11.6
921-24 Chondromatous Neoplasms	14	7.4	11	6.7	25	7.1
925 Giant Cell Tumors	10	5.3	13	7.9	23	6.5
926 Miscellaneous bone tumors	12	6.4	8	4.8	20	5.7
927-34 Odontogenic Tumors	3	1.6	2	1.2	5	1.4
954-57 Nerve Sheat Tumors	5	2.7	2	1.2	7	2.0
958 Granular Cell Tumors	1	0.5	0	0.0	1	0.3
Total	188	100.0	165	100.0	353	100.0

Contd ...Table 16

Site Group / Histological Group	Male		Female		Total	
	#	%	#	%	#	%
C44 Skin						
800 Malignant Neoplasm	1	1.2	1	1.2	2	1.2
801-4 Epithelial Neoplasms	3	3.5	4	4.7	7	4.1
805-8 Papillary & Squamous Cell Neopla	41	47.7	25	29.4	66	38.6
809-11 Basal Cell Neoplasms	17	19.8	26	30.6	43	25.1
814-38 Adenocarcinomas	0	0.0	1	1.2	1	0.6
839-42 Adnexal & Skin appendage Neo	2	2.3	5	5.9	7	4.1
843 Mucoepidermoid Neoplasms	2	2.3	0	0.0	2	1.2
844-49 Cystic, Muinous & Serous Neopla	0	0.0	1	1.2	1	0.6
872-79 Nevi Melanomas	18	20.9	20	23.5	38	22.2
881-83 Fibromatous	1	1.2	2	2.4	3	1.8
889-92 Myomatous Neoplasms	1	1.2	0	0.0	1	0.6
Total	86	100.0	85	100.0	171	100.0
C50 Breast						
800 Malignant Neoplasm	9	15.3	141	8.0	150	8.2
801-4 Epithelial Neoplasms	2	3.4	25	1.4	27	1.5
805-8 Papillary & Squamous Cell Neopla	2	3.4	10	0.6	12	0.7
814-38 Adenocarcinomas	1	1.7	28	1.6	29	1.6
844-49 Cystic, Muinous & Serous Neopla	1	1.7	26	1.5	27	1.5
850-54 Ductal,Lobular & Medulary Neopl	43	72.9	1524	86.4	1567	86.0
885-88 Lipomatous Neoplasms	1	1.7	0	0.0	1	0.1
893-99 Complex mixed and stromal Neopl	0	0.0	1	0.1	1	0.1
900-03 Fibroepithelial Neoplasms	0	0.0	9	0.5	9	0.5
Total	59	100.0	1764	100.0	1823	100.0
C51-C58 Female Genital Organs						
800 Malignant Neoplasm	-	-	171	9.6	171	9.6
801-4 Epithelial Neoplasms	-	-	50	2.8	50	2.8
805-8 Papillary & Squamous Cell Neopla	-	-	1016	56.9	1016	56.9
812-13 Transitional cell carcinomas	-	-	2	0.1	2	0.1
814-38 Adenocarcinomas	-	-	278	15.6	278	15.6
844-49 Cystic, Muinous & Serous Neopla	-	-	233	13.0	233	13.0
850-54 Ductal,Lobular & Medulary Neopl	-	-	8	0.4	8	0.4
856-58 Complex Epithelial Neoplasms	-	-	9	0.5	9	0.5
889-92 Myomatous Neoplasms	-	-	1	0.1	1	0.1
893-99 Complex mixed and stromal Neopl	-	-	5	0.3	5	0.3
900-03 Fibroepithelial Neoplasms	-	-	1	0.1	1	0.1
906-09 Germ Cell Neoplasms	-	-	10	0.6	10	0.6
910 Trophoblastic Neoplasms	-	-	3	0.2	3	0.2
Total	-	-	1787	100.0	1787	100.0
C60-C63 Male Genital Organs						
800 Malignant Neoplasm	68	13.1	-	-	68	13.1
801-4 Epithelial Neoplasms	12	2.3	-	-	12	2.3
805-8 Papillary & Squamous Cell Neopla	68	13.1	-	-	68	13.1
812-13 Transitional cell carcinomas	8	1.5	-	-	8	1.5
814-38 Adenocarcinomas	312	60.0	-	-	312	60.0
906-09 Germ Cell Neoplasms	52	10.0	-	-	52	10.0
Total	520	100.0	-	-	520	100.0

Contd...Table 16

Site Group / Histological Group	Male		Female		Total	
	#	%	#	%	#	%
<u>C64-C68 Urinary Organs</u>						
800 Malignant Neoplasm	27	7.7	7	6.5	34	7.4
801-4 Epithelial Neoplasms	6	1.7	0	0.0	6	1.3
805-8 Papillary & Squamous Cell Neopla	13	3.7	5	4.6	18	3.9
812-13 Transitional cell carcinomas	169	48.3	34	31.5	203	44.3
814-38 Adenocarcinomas	121	34.6	55	50.9	176	38.4
844-49 Cystic, Muinous & Serous Neopla	1	0.3	0	0.0	1	0.2
889-92 Myomatous Neoplasms	2	0.6	0	0.0	2	0.4
893-99 Complex mixed and stromal Neopl	11	3.1	7	6.5	18	3.9
Total	350	100.0	108	100.0	458	100.0
<u>C69-C72 Eye & Nervous System</u>						
800 Malignant Neoplasm	14	4.5	12	6.1	26	5.1
801-4 Epithelial Neoplasms	2	0.6	1	0.5	3	0.6
805-8 Papillary & Squamous Cell Neopla	0	0.0	1	0.5	1	0.2
814-38 Adenocarcinomas	1	0.3	4	2.0	5	1.0
844-49 Cystic, Muinous & Serous Neopla	0	0.0	1	0.5	1	0.2
938-48 Gliomas	281	89.5	168	85.3	449	87.9
949-52 Neuroepitheliomatous neoplasms	11	3.5	5	2.5	16	3.1
953 Meningiomas	5	1.6	5	2.5	10	2.0
Total	314	100.0	197	100.0	511	100.0
<u>C73-C75 Thyroid & Other Endoglands</u>						
800 Malignant Neoplasm	4	5.9	7	6.9	11	6.5
801-4 Epithelial Neoplasms	8	11.8	6	5.9	14	8.3
805-8 Papillary & Squamous Cell Neopla	18	26.5	29	28.7	47	27.8
814-38 Adenocarcinomas	20	29.4	45	44.6	65	38.5
850-54 Ductal,Lobular & Medulary Neopl	6	8.8	4	4.0	10	5.9
881-83 Fibromatous	0	0.0	1	1.0	1	0.6
937 Miscellaneous Tumors	0	0.0	1	1.0	1	0.6
949-52 Neuroepitheliomatous neoplasms	11	16.2	8	7.9	19	11.2
959-63 Lymphomas NOS, Diffuse	1	1.5	0	0.0	1	0.6
Total	68	100.0	101	100.0	169	100.0
<u>C76-C80 Illedefined, Lymphnodes</u>						
800 Malignant Neoplasm	136	41.7	108	46.8	244	43.8
801-4 Epithelial Neoplasms	41	12.6	24	10.4	65	11.7
805-8 Papillary & Squamous Cell Neopla	67	20.6	33	14.3	100	18.0
814-38 Adenocarcinomas	71	21.8	56	24.2	127	22.8
843 Mucoepidermoid Neoplasms	1	0.3	2	0.9	3	0.5
844-49 Cystic, Muinous & Serous Neopla	2	0.6	3	1.3	5	0.9
850-54 Ductal,Lobular & Medulary Neopl	0	0.0	1	0.4	1	0.2
856-58 Complex Epithelial Neoplasms	1	0.3	1	0.4	2	0.4
880 Soft Tissue Tumors & Sarcomas	1	0.3	0	0.0	1	0.2
881-83 Fibromatous	1	0.3	0	0.0	1	0.2
905 Mesothelial Neoplasms	2	0.6	1	0.4	3	0.5
906-09 Germ Cell Neoplasms	1	0.3	0	0.0	1	0.2
912-16 Blood Vessel Tumors	1	0.3	0	0.0	1	0.2
918-20 Osetomas & Osteosarcomas	0	0.0	2	0.9	2	0.4
938-48 Gliomas	1	0.3	0	0.0	1	0.2
Total	326	100.0	231	100.0	557	100.0

Contd...Table 16

Site Group / Histological Group	Male		Female		Total	
	#	%	#	%	#	%
C81-C95Lymphoid, Haematopoietic & Related Tissue						
959-63 Lymphomas NOS, Diffuse	259	36.9	156	36.0	415	36.6
965-66 Hodgkins Disease	74	10.5	36	8.3	110	9.7
967-68 Mal.Lymphoma Sp.type,diffuse No	12	1.7	7	1.6	19	1.7
969 Lymphomas, Nodular or Follicular	5	0.7	7	1.6	12	1.1
973 Plasma cell tumors	75	10.7	47	10.9	122	10.7
980 Leukemias, Nos	38	5.4	27	6.2	65	5.7
982 Lymphoid Leukemias	121	17.2	62	14.3	183	16.1
984 Erythroleukemias	0	0.0	2	0.5	2	0.2
986 Myeloid Leukemias	118	16.8	89	20.6	207	18.2
Total	702	100.0	433	100.0	1135	100.0

Table 17: Number of Cancer Deaths by Age and Site (ICD10) with Percentages, Poona City, 2001-05, Male.

ICD10	0	5	10	15	20	25	30	35	40	45	50	55	60	65	70	75	ANS	Total	%
C00 Lip	0	0	0	0	0	0	0	0	0	0	1	0	3	0	2	3	1	10	0.4
C01-02 Tongue	0	0	0	0	0	1	2	1	4	4	6	6	9	7	6	9	1	56	2.3
C03 Gum	0	0	0	0	0	0	0	1	4	4	5	4	5	8	5	2	3	41	1.7
C04-06 Other Mouth	0	0	1	0	0	1	3	2	4	12	16	7	8	11	3	8	0	76	3.2
C07-08 Salivary Gland	0	0	0	0	0	0	0	1	0	0	0	2	1	0	0	1	0	5	0.2
C09-10 Oropharynx	0	0	0	0	0	0	1	0	0	1	2	1	1	4	3	0	0	13	0.5
C11 Nasopharynx	0	0	0	1	2	0	0	1	0	1	1	0	1	1	0	3	0	11	0.5
C12-13 Hypopharynx	0	0	0	0	0	0	0	0	1	1	4	2	4	3	2	6	0	23	1.0
C14 Pharynx	0	0	0	0	0	0	0	0	1	0	3	4	5	2	3	9	0	27	1.1
C15 Oesophagus	0	0	0	0	0	2	1	1	9	12	13	16	18	33	25	46	2	178	7.4
C16 Stomach	0	0	0	0	1	1	4	1	4	6	17	12	18	21	16	32	1	134	5.6
C17 Small Intenst	0	0	0	0	0	1	0	1	0	1	0	0	0	0	0	3	0	6	0.2
C18 Colon	0	0	0	1	0	3	3	3	4	8	6	7	14	14	14	20	1	98	4.1
C19-21 Rectum	0	1	0	0	1	0	1	5	6	2	7	9	4	15	4	17	0	72	3.0
C22 Liver	1	0	0	0	1	1	1	4	4	12	23	13	22	26	28	36	0	172	7.2
C23-24 Gall Bladder,Bile	0	0	0	0	0	0	0	2	1	1	1	1	5	3	8	10	0	32	1.3
C25 Pancreas	1	0	0	0	0	0	2	3	2	4	10	8	17	7	9	20	0	83	3.5
C26 Other Digest	0	0	0	0	0	0	0	0	1	0	0	1	3	2	3	4	0	14	0.6
C30-31 Nose, Sinuse	0	0	0	0	0	0	0	2	3	0	3	2	1	1	2	2	0	16	0.7
C32 Larynx	0	0	0	0	0	1	1	3	2	2	6	4	11	14	12	24	2	82	3.4
C33-34 Lung	0	0	0	0	0	4	2	7	13	12	13	33	26	29	39	36	1	215	8.9
C37-38 Mediast,Plura	0	0	0	0	0	0	0	1	0	0	1	0	3	0	2	3	0	10	0.4
C39 Respir. Tract	0	0	0	0	0	0	0	0	0	0	0	0	0	0	0	0	0	0	0.0
C40-41 Bone	1	0	1	3	1	1	1	2	0	1	1	0	1	1	1	0	1	16	0.7
C43 Skin-Melanoma	0	0	0	0	0	0	0	0	0	0	0	1	0	0	0	1	0	2	0.1
C44 Skin-Others	0	1	0	0	2	0	1	0	1	3	1	3	0	1	0	1	1	15	0.6
C48 Retroperitone	0	0	0	0	0	0	0	0	0	0	0	0	0	0	2	0	0	2	0.1
C49 Conn. & Soft	1	0	1	0	2	1	0	3	2	0	0	1	2	6	0	4	0	23	1.0
C50 Breast	0	0	0	0	0	0	0	0	1	0	1	4	7	4	2	2	0	21	0.9
C60 Penis	0	0	0	0	0	0	0	2	2	1	0	1	4	4	2	2	0	18	0.7
C61 Prostate	0	0	0	0	0	0	0	0	0	1	0	8	8	29	28	83	4	161	6.7
C62 Testis	1	1	0	0	0	3	2	3	0	0	1	0	2	2	0	4	0	19	0.8
C63 Oth Male Genital	0	0	0	0	0	0	0	0	0	0	0	0	0	0	0	0	0	0	0.0
C64-65 Kidney	0	1	1	0	1	1	0	0	1	0	0	5	2	5	2	13	0	32	1.3
C66-68 U.Bladder	0	0	0	0	0	0	1	1	0	4	3	4	8	9	14	23	0	67	2.8
C69 Eye	0	0	0	0	0	0	0	0	0	0	0	0	0	0	0	0	0	0	0.0
C70-72 Brain	2	6	6	2	4	6	7	4	4	9	12	7	11	7	5	8	4	104	4.3
C73 Thyroid	0	0	0	0	0	0	0	0	1	1	0	0	0	1	1	2	0	6	0.2
C74-75 Oth Endo Gland	2	0	0	0	1	0	0	0	0	0	0	0	0	1	0	0	0	4	0.2
C76 Ill Diff Sit	0	0	0	1	0	1	0	0	0	3	1	1	1	4	2	1	0	15	0.6
C77 Sec Lymphnode	0	0	0	0	0	0	0	0	0	1	1	1	0	2	1	2	0	8	0.3
C78 Sec.Res.& Dig	0	0	0	0	0	0	1	0	2	1	3	5	4	2	3	6	0	27	1.1
C79 Sec.Others	0	0	0	0	0	0	0	0	0	0	1	1	3	1	1	0	0	7	0.3
C80 Prim Unk	2	0	0	0	2	0	6	8	1	11	15	11	12	18	17	22	2	127	5.3
C81 Hodgkins Lypoma	0	0	0	1	2	1	1	2	3	0	2	1	0	2	4	2	0	21	0.9
C82-85 N.H.Lymphoma	0	0	1	1	1	2	4	5	3	9	9	12	20	14	15	20	2	118	4.9
C90 Mult. Myeolom	0	0	0	0	1	0	0	0	1	4	5	3	6	3	5	10	0	38	1.6
C91 Leuk-Lymphoid	3	6	4	5	5	0	2	0	2	1	4	3	5	4	3	6	0	53	2.2
C92 Leuk-Myeloid	1	3	4	5	8	4	2	6	4	6	7	7	7	8	11	13	0	96	4.0
C95 Leuk-Unsp	4	2	1	1	4	1	2	1	0	0	2	3	0	2	2	4	0	29	1.2
Total All Sites	19	21	20	21	39	36	51	76	91	139	207	214	282	331	307	523	26	2403	100.0

Table 18: Number of Cancer Deaths by Age and Site (ICD10) with Percentages, Poona City, 2001-05, Female.

ICD10	0	5	10	15	20	25	30	35	40	45	50	55	60	65	70	75	99	Total	%
C00 Lip	0	0	0	0	0	0	0	0	0	0	0	0	1	0	1	1	0	3	0.1
C01-02 Tongue	0	0	0	0	1	1	2	0	1	4	5	6	3	7	4	2	1	37	1.5
C03 Gum	0	0	0	0	0	0	0	2	1	1	7	4	3	2	4	4	1	29	1.2
C04-06 Other Mouth	0	0	0	0	0	0	0	1	5	8	8	6	6	7	7	10	0	58	2.3
C07-08 Salivary Gland	0	0	0	0	0	0	0	0	0	0	0	0	0	0	0	1	0	1	0.0
C09-10 Oropharynx	0	0	0	0	0	0	0	0	0	0	0	0	0	1	0	0	0	1	0.0
C11 Nasopharynx	0	0	0	0	0	1	0	0	0	0	1	0	0	0	4	2	0	8	0.3
C12-13 Hypopharynx	0	0	0	0	0	0	1	1	1	1	0	2	1	1	1	1	0	10	0.4
C14 Pharynx	0	0	0	0	0	0	0	0	1	1	0	0	1	1	1	4	0	9	0.4
C15 Oesophagus	0	0	0	0	0	0	1	1	7	9	10	17	15	28	36	40	0	164	6.6
C16 Stomach	0	0	0	0	0	0	2	2	6	3	6	8	7	11	13	19	1	78	3.1
C17 Small Intenst	0	0	0	0	0	0	0	2	1	0	2	0	0	0	0	3	0	8	0.3
C18 Colon	0	0	0	1	0	0	1	3	2	5	6	9	13	14	7	26	0	87	3.5
C19-21 Rectum	0	0	0	0	2	1	1	3	2	6	7	9	8	10	8	3	0	60	2.4
C22 Liver	1	0	0	0	0	1	1	3	4	6	4	3	7	12	3	22	1	68	2.7
C23-24 Gall Bladder,	0	0	0	0	0	0	0	0	1	2	8	4	4	3	5	9	1	37	1.5
C25 Pancreas	0	0	0	0	0	1	0	0	1	1	6	4	4	12	10	12	0	51	2.0
C26 Other Digest	0	0	0	0	0	0	0	0	0	0	0	1	0	0	2	2	0	5	0.2
C30-31 Nose, Sinuse	0	0	0	0	0	0	0	0	0	0	0	2	1	1	0	4	0	8	0.3
C32 Larynx	0	0	0	0	0	0	1	1	0	1	1	1	6	4	2	6	0	23	0.9
C33-34 Lung	0	0	0	0	0	1	9	7	10	15	9	10	14	15	22	26	3	141	5.6
C37-38 Mediast,Plura	0	0	0	0	0	0	0	0	0	1	2	0	1	2	1	1	0	8	0.3
C40-41 Bone	0	0	1	3	2	1	0	0	3	0	0	2	1	2	1	5	1	22	0.9
C43 Skin-Melanoma	0	0	0	0	0	0	0	0	0	0	2	0	0	2	0	0	0	4	0.2
C44 Skin-Others	0	0	0	0	0	0	2	0	0	1	0	1	1	1	1	2	0	9	0.4
C48 Retroperitone	0	0	0	0	0	1	0	0	0	0	0	0	0	0	4	1	0	6	0.2
C49 Conn. & Soft	1	0	0	0	0	0	1	2	1	2	1	2	3	1	3	1	0	18	0.7
C50 Breast	1	0	0	0	3	6	14	32	35	62	72	60	56	50	64	81	7	543	21.7
C51-52 Oth Fem Genital	0	0	0	0	0	0	0	0	0	0	0	0	0	0	0	0	0	0	0.0
C53 Cervix	0	0	0	0	0	2	5	10	23	28	25	24	36	33	20	30	2	238	9.5
C54 Corpus Uteri	0	0	0	0	0	0	0	0	0	2	5	4	3	4	5	7	0	30	1.2
C55 Uterus	0	0	0	0	0	0	0	2	1	1	5	4	2	8	7	5	0	35	1.4
C56 Ovary	0	0	0	0	4	5	3	8	11	19	25	21	26	24	26	31	1	204	8.2
C58 Placenta	0	0	0	0	0	0	0	0	0	0	0	0	0	0	0	0	0	0	0.0
C64-65 Kidney	1	0	0	1	0	0	0	2	0	1	3	4	1	3	1	6	0	23	0.9
C66-68 U.Bladder	0	0	0	0	0	0	1	0	0	0	0	2	2	2	3	3	0	13	0.5
C69 Eye	1	0	0	0	0	0	0	0	0	0	0	0	0	0	0	0	0	1	0.0
C70-72 Brain	0	2	2	2	1	3	2	2	4	5	4	4	10	6	5	8	2	62	2.5
C73 Thyroid	0	0	0	0	0	0	0	0	0	0	1	2	1	3	3	6	0	16	0.6
C74-75 Oth Endo Gland	0	0	0	0	0	0	0	0	0	0	0	1	0	1	0	1	0	3	0.1
C76 Ill Diff Sit	0	0	0	0	0	0	0	0	1	3	1	4	2	0	0	3	0	14	0.6
C77 Sec Lymphnode	0	0	0	0	0	1	0	0	1	1	0	0	1	0	1	2	1	8	0.3
C78 Sec.Res.& Dig	0	0	0	0	0	0	0	1	2	4	3	2	2	1	2	6	0	23	0.9
C79 Sec.Others	0	0	0	0	0	0	2	0	0	1	0	0	3	2	1	0	0	9	0.4
C80 Prim Unk	0	0	0	0	1	1	1	4	5	9	7	10	11	15	9	21	2	96	3.8
C81 Hodgkins Lymph	0	0	1	0	0	0	0	0	0	0	1	0	0	3	0	1	0	6	0.2
C82-85 N.H.Lymphoma	0	1	1	1	1	0	2	1	1	5	8	2	6	15	11	14	0	69	2.8
C90 Mult. Myeolom	0	0	0	0	0	0	0	2	1	2	4	2	4	4	3	6	0	28	1.1
C91 Leuk-Lymphoid	4	6	3	4	0	2	1	2	2	2	0	0	2	1	1	2	0	32	1.3
C92 Leuk-Myeloid	3	4	3	4	5	2	5	10	4	4	3	4	6	6	4	7	0	74	3.0
C95 Leuk-Unsp	0	0	3	1	0	0	2	5	0	0	3	1	0	1	1	1	0	18	0.7
Total All Sites	12	13	14	17	20	30	60	109	138	216	255	242	274	319	307	448	24	2498	100.0

Table 19: Average Annual Age-Specific, World Age Adjusted, Truncated (35-64) Incidence Rates of Cancer Deaths per 100,000 Persons, Poona City, 2001-05 Male.

ICD-10	0	5	10	15	20	25	30	35	40	45	50	55	60	65	70	75	CR	AAR	TR
C00 Lip	0.0	0.0	0.0	0.0	0.0	0.0	0.0	0.0	0.0	0.0	0.2	0.0	1.3	0.0	1.7	2.4	0.1	0.1	0.2
C01-02 Tongue	0.0	0.0	0.0	0.0	0.0	0.1	0.2	0.1	0.6	0.8	1.4	2.2	4.0	4.2	5.1	7.3	0.5	0.8	1.3
C03 Gum	0.0	0.0	0.0	0.0	0.0	0.0	0.0	0.1	0.6	0.8	1.2	1.4	2.2	4.8	4.2	1.6	0.4	0.6	1.0
C04-06 Other Mouth	0.0	0.0	0.1	0.0	0.0	0.1	0.3	0.3	0.6	2.3	3.7	2.5	3.5	6.6	2.5	6.5	0.7	1.0	2.0
C07-08 Salivary Gland	0.0	0.0	0.0	0.0	0.0	0.0	0.0	0.1	0.0	0.0	0.0	0.7	0.4	0.0	0.0	0.8	0.0	0.1	0.2
C09-10 Oropharynx	0.0	0.0	0.0	0.0	0.0	0.0	0.1	0.0	0.0	0.2	0.5	0.4	0.4	2.4	2.5	0.0	0.1	0.2	0.2
C11 Nasopharynx	0.0	0.0	0.0	0.1	0.2	0.0	0.0	0.1	0.0	0.2	0.2	0.0	0.4	0.6	0.0	2.4	0.1	0.1	0.2
C12-13 Hypopharynx	0.0	0.0	0.0	0.0	0.0	0.0	0.0	0.0	0.2	0.2	0.9	0.7	1.8	1.8	1.7	4.9	0.2	0.4	0.5
C14 Pharynx	0.0	0.0	0.0	0.0	0.0	0.0	0.0	0.0	0.2	0.0	0.7	1.4	2.2	1.2	2.5	7.3	0.3	0.4	0.6
C15 Oesophagus	0.0	0.0	0.0	0.0	0.0	0.2	0.1	0.1	1.4	2.3	3.0	5.7	8.0	19.7	21.1	37.5	1.7	2.7	3.0
C16 Stomach	0.0	0.0	0.0	0.0	0.1	0.1	0.4	0.1	0.6	1.2	4.0	4.3	8.0	12.5	13.5	26.1	1.3	2.0	2.6
C17 Small Intestine	0.0	0.0	0.0	0.0	0.0	0.1	0.0	0.1	0.0	0.2	0.0	0.0	0.0	0.0	0.0	2.4	0.1	0.1	0.1
C18 Colon	0.0	0.0	0.0	0.1	0.0	0.3	0.3	0.4	0.6	1.5	1.4	2.5	6.2	8.4	11.8	16.3	0.9	1.4	1.8
C19-21 Rectum	0.0	0.1	0.0	0.0	0.1	0.0	0.1	0.7	0.9	0.4	1.6	3.2	1.8	9.0	3.4	13.9	0.7	1.0	1.3
C22 Liver	0.1	0.0	0.0	0.0	0.1	0.1	0.1	0.5	0.6	2.3	5.3	4.7	9.8	15.5	23.7	29.3	1.7	2.6	3.4
C23-24 Gall Bladder,Bile	0.0	0.0	0.0	0.0	0.0	0.0	0.0	0.3	0.2	0.2	0.2	0.4	2.2	1.8	6.8	8.2	0.3	0.5	0.5
C25 Pancreas	0.1	0.0	0.0	0.0	0.0	0.0	0.2	0.4	0.3	0.8	2.3	2.9	7.5	4.2	7.6	16.3	0.8	1.3	2.0
C26 Other Digest	0.0	0.0	0.0	0.0	0.0	0.0	0.0	0.0	0.2	0.0	0.0	0.4	1.3	1.2	2.5	3.3	0.1	0.2	0.2
C30-31 Nose, sinuse	0.0	0.0	0.0	0.0	0.0	0.0	0.0	0.3	0.5	0.0	0.7	0.7	0.4	0.6	1.7	1.6	0.2	0.2	0.4
C32 Larynx	0.0	0.0	0.0	0.0	0.0	0.1	0.1	0.4	0.3	0.4	1.4	1.4	4.9	8.4	10.1	19.6	0.8	1.2	1.2
C33-34 Lung	0.0	0.0	0.0	0.0	0.0	0.4	0.2	0.9	2.0	2.3	3.0	11.9	11.5	17.3	33.0	29.3	2.1	3.2	4.5
C37-38 Mediast.plura	0.0	0.0	0.0	0.0	0.0	0.0	0.0	0.1	0.0	0.0	0.2	0.0	1.3	0.0	1.7	2.4	0.1	0.2	0.2
C39 Respir.Tract	0.0	0.0	0.0	0.0	0.0	0.0	0.0	0.0	0.0	0.0	0.0	0.0	0.0	0.0	0.0	0.0	0.0	0.0	0.0
C40-41 Bone	0.1	0.0	0.1	0.3	0.1	0.1	0.1	0.3	0.0	0.2	0.2	0.0	0.4	0.6	0.8	0.0	0.2	0.2	0.2
C43 Skin-Melanoma	0.0	0.0	0.0	0.0	0.0	0.0	0.0	0.0	0.0	0.0	0.0	0.4	0.0	0.0	0.0	0.8	0.0	0.0	0.0
C44 Skin-others	0.0	0.1	0.0	0.0	0.2	0.0	0.1	0.0	0.2	0.6	0.2	1.1	0.0	0.6	0.0	0.8	0.1	0.2	0.3
C48 Retroperitoneum	0.0	0.0	0.0	0.0	0.0	0.0	0.0	0.0	0.0	0.0	0.0	0.0	0.0	0.0	1.7	0.0	0.0	0.0	0.0
C49 Conn.&Soft Tissue	0.1	0.0	0.1	0.0	0.2	0.1	0.0	0.4	0.3	0.0	0.0	0.4	0.9	3.6	0.0	3.3	0.2	0.3	0.3
C50 Breast	0.0	0.0	0.0	0.0	0.0	0.0	0.0	0.0	0.2	0.0	0.2	1.4	3.1	2.4	1.7	1.6	0.2	0.3	0.7
C60 Penis	0.0	0.0	0.0	0.0	0.0	0.0	0.0	0.3	0.3	0.2	0.0	0.4	1.8	2.4	1.7	1.6	0.2	0.3	0.4
C61 Prostate	0.0	0.0	0.0	0.0	0.0	0.0	0.0	0.0	0.0	0.2	0.0	2.9	3.5	17.3	23.7	67.7	1.6	2.6	0.9
C62 Testis	0.1	0.1	0.0	0.0	0.0	0.3	0.2	0.4	0.0	0.0	0.2	0.0	0.9	1.2	0.0	3.3	0.2	0.2	0.2
C63 Oth Male Genital	0.0	0.0	0.0	0.0	0.0	0.0	0.0	0.0	0.0	0.0	0.0	0.0	0.0	0.0	0.0	0.0	0.0	0.0	0.0
C64-65 Kidney	0.0	0.1	0.1	0.0	0.1	0.1	0.0	0.0	0.2	0.0	0.0	1.8	0.9	3.0	1.7	10.6	0.3	0.5	0.4
C66-68 U.Bladder	0.0	0.0	0.0	0.0	0.0	0.0	0.1	0.1	0.0	0.8	0.7	1.4	3.5	5.4	11.8	18.8	0.6	1.1	0.9
C69 Eye	0.0	0.0	0.0	0.0	0.0	0.0	0.0	0.0	0.0	0.0	0.0	0.0	0.0	0.0	0.0	0.0	0.0	0.0	0.0
C70-72 Brain	0.2	0.7	0.6	0.2	0.3	0.6	0.8	0.5	0.6	1.7	2.8	2.5	4.9	4.2	4.2	6.5	1.0	1.2	2.0
C73 Thyroid	0.0	0.0	0.0	0.0	0.0	0.0	0.0	0.0	0.2	0.2	0.0	0.0	0.0	0.6	0.8	1.6	0.1	0.1	0.1
C74-75 Oth.Endo.Gland	0.2	0.0	0.0	0.0	0.1	0.0	0.0	0.0	0.0	0.0	0.0	0.0	0.0	0.6	0.0	0.0	0.0	0.1	0.0
C76 Ill Diff sites	0.0	0.0	0.0	0.1	0.0	0.1	0.0	0.0	0.0	0.6	0.2	0.4	0.4	2.4	1.7	0.8	0.1	0.2	0.3
C77 Sec.Lymphnodes	0.0	0.0	0.0	0.0	0.0	0.0	0.0	0.0	0.0	0.2	0.2	0.4	0.0	1.2	0.8	1.6	0.1	0.1	0.1
C78 Sec.Res.& Dig.Sys	0.0	0.0	0.0	0.0	0.0	0.0	0.1	0.0	0.3	0.2	0.7	1.8	1.8	1.2	2.5	4.9	0.3	0.4	0.7
C79 Sec.Others	0.0	0.0	0.0	0.0	0.0	0.0	0.0	0.0	0.0	0.0	0.2	0.4	1.3	0.6	0.8	0.0	0.1	0.1	0.3
C80 Prim Unk	0.2	0.0	0.0	0.0	0.2	0.0	0.7	1.1	0.2	2.1	3.5	4.0	5.3	10.7	14.4	17.9	1.2	1.8	2.4
C81 Hodgkin Lymphoma	0.0	0.0	0.0	0.1	0.2	0.1	0.1	0.3	0.5	0.0	0.5	0.4	0.0	1.2	3.4	1.6	0.2	0.3	0.3
C82-85 N.H.Lymphoma	0.0	0.0	0.1	0.1	0.1	0.2	0.4	0.7	0.5	1.7	2.1	4.3	8.9	8.4	12.7	16.3	1.1	1.7	2.6
C90 Mult-Myeloma	0.0	0.0	0.0	0.0	0.1	0.0	0.0	0.0	0.2	0.8	1.2	1.1	2.7	1.8	4.2	8.2	0.4	0.6	0.8
C91 Leuk-Lymphoid	0.3	0.7	0.4	0.5	0.4	0.0	0.2	0.0	0.3	0.2	0.9	1.1	2.2	2.4	2.5	4.9	0.5	0.7	0.7
C92 Leuk-Myeloid	0.1	0.3	0.4	0.5	0.7	0.4	0.2	0.8	0.6	1.2	1.6	2.5	3.1	4.8	9.3	10.6	0.9	1.2	1.5
C95 Leuk-Unsp	0.4	0.2	0.1	0.1	0.3	0.1	0.2	0.1	0.0	0.0	0.5	1.1	0.0	1.2	1.7	3.3	0.3	0.3	0.2
Total All Sites	2.1	2.4	1.9	2.0	3.3	3.4	5.6	10.0	13.9	26.8	48.1	76.9	125.0	197.6	259.5	426.4	23.2	34.9	43.6

Table 20: Average Annual Age-Specific, World Age Adjusted, Truncated (35-64) Incidence Rates of Cancer Deaths per 100,000 Persons, Poona City, 2001-05 Female.

ICD 10	0	5	10	15	20	25	30	35	40	45	50	55	60	65	70	75	CR	AAR	TR
C00 Lip	0.0	0.0	0.0	0.0	0.0	0.0	0.0	0.0	0.0	0.0	0.0	0.0	0.4	0.0	0.8	0.8	0.0	0.0	0.1
C01-02 Tongue	0.0	0.0	0.0	0.0	0.1	0.1	0.3	0.1	0.2	0.8	1.4	2.4	1.3	3.6	3.1	1.5	0.4	0.5	0.9
C03 Gum	0.0	0.0	0.0	0.0	0.0	0.0	0.0	0.1	0.2	0.2	2.0	1.6	1.3	1.0	3.1	3.0	0.3	0.4	0.8
C04-06 Other Mouth	0.0	0.0	0.0	0.0	0.0	0.0	0.0	0.7	0.9	1.7	2.3	2.4	2.6	3.6	5.5	7.6	0.6	0.9	1.6
C07-08 Salivary Gland	0.0	0.0	0.0	0.0	0.0	0.0	0.0	0.0	0.0	0.0	0.0	0.0	0.0	0.0	0.0	0.8	0.0	0.0	0.0
C09-10 Oropharynx	0.0	0.0	0.0	0.0	0.0	0.0	0.0	0.0	0.0	0.0	0.0	0.0	0.0	0.5	0.0	0.0	0.0	0.0	0.0
C11 Nasopharynx	0.0	0.0	0.0	0.0	0.0	0.1	0.0	0.0	0.0	0.0	0.3	0.0	0.0	0.0	3.1	1.5	0.1	0.1	0.0
C12-13 Hypopharynx	0.0	0.0	0.0	0.0	0.0	0.0	0.1	0.1	0.2	0.2	0.0	0.8	0.4	0.5	0.8	0.8	0.1	0.1	0.3
C14 Pharynx	0.0	0.0	0.0	0.0	0.0	0.0	0.0	0.1	0.2	0.2	0.0	0.0	0.4	0.5	0.8	3.0	0.1	0.1	0.2
C15 Oesophagus	0.0	0.0	0.0	0.0	0.0	0.0	0.1	1.0	1.3	1.9	2.8	6.7	6.5	14.3	28.2	30.3	1.8	2.5	3.0
C16 Stomach	0.0	0.0	0.0	0.0	0.0	0.0	0.3	0.8	1.1	0.6	1.7	3.1	3.0	5.6	10.2	14.4	0.8	1.2	1.6
C17 Small Intenstine	0.0	0.0	0.0	0.0	0.0	0.0	0.0	0.1	0.2	0.0	0.6	0.0	0.0	0.0	0.0	2.3	0.1	0.1	0.2
C18 Colon	0.0	0.0	0.0	0.1	0.0	0.0	0.1	0.3	0.4	1.0	1.7	3.5	5.6	7.2	5.5	19.7	0.9	1.3	1.8
C19-21 Rectum	0.0	0.0	0.0	0.0	0.2	0.1	0.1	0.3	0.4	1.3	2.0	3.5	3.4	5.1	6.3	2.3	0.6	0.8	1.6
C22 Liver	0.1	0.0	0.0	0.0	0.0	0.1	0.1	0.5	0.7	1.3	1.1	1.2	3.0	6.1	2.4	16.7	0.7	1.0	1.2
C23-24 Gall Bladder,Bile	0.0	0.0	0.0	0.0	0.0	0.0	0.0	0.1	0.2	0.4	2.3	1.6	1.7	1.5	3.9	6.8	0.4	0.6	0.9
C25 Pancreas	0.0	0.0	0.0	0.0	0.0	0.1	0.0	0.1	0.2	0.2	1.7	1.6	1.7	6.1	7.8	9.1	0.5	0.8	0.8
C26 Other Digest	0.0	0.0	0.0	0.0	0.0	0.0	0.0	0.0	0.0	0.0	0.0	0.4	0.0	0.0	1.6	1.5	0.1	0.1	0.1
C30-31 Nose, sinuse	0.0	0.0	0.0	0.0	0.0	0.0	0.0	0.0	0.0	0.0	0.0	0.8	0.4	0.5	0.0	3.0	0.1	0.1	0.2
C32 Larynx	0.0	0.0	0.0	0.0	0.0	0.0	0.1	0.0	0.0	0.2	0.3	0.4	2.6	2.0	1.6	4.5	0.2	0.3	0.5
C33-34 Lung	0.0	0.0	0.0	0.0	0.0	0.1	1.1	1.4	1.8	3.1	2.5	3.9	6.0	7.7	17.2	19.7	1.5	2.0	2.9
C37-38 Mediast.,plura	0.0	0.0	0.0	0.0	0.0	0.0	0.0	0.0	0.0	0.2	0.6	0.0	0.4	1.0	0.8	0.8	0.1	0.1	0.2
C40-41 Bone	0.0	0.0	0.1	0.3	0.2	0.1	0.0	0.4	0.5	0.0	0.0	0.8	0.4	1.0	0.8	3.8	0.2	0.3	0.3
C43 Skin-Melanoma	0.0	0.0	0.0	0.0	0.0	0.0	0.0	0.0	0.0	0.0	0.6	0.0	0.0	1.0	0.0	0.0	0.0	0.1	0.1
C44 Skin-others	0.0	0.0	0.0	0.0	0.0	0.0	0.3	0.0	0.0	0.2	0.0	0.4	0.4	0.5	0.8	1.5	0.1	0.1	0.1
C48 Retroperitoneum	0.0	0.0	0.0	0.0	0.0	0.1	0.0	0.0	0.0	0.0	0.0	0.0	0.0	0.0	3.1	0.8	0.1	0.1	0.0
C49 Conn.&Soft Tissue	0.1	0.0	0.0	0.0	0.0	0.0	0.1	0.1	0.2	0.4	0.3	0.8	1.3	0.5	2.4	0.8	0.2	0.2	0.5
C50 Breast	0.1	0.0	0.0	0.0	0.3	0.6	1.8	4.8	6.4	12.9	20.4	23.6	24.1	25.6	50.2	61.3	5.8	7.6	14.1
C51-52 Oth Fem Genital	0.0	0.0	0.0	0.0	0.0	0.0	0.0	0.0	0.0	0.0	0.0	0.0	0.0	0.0	0.0	0.0	0.0	0.0	0.0
C53 Cervix	0.0	0.0	0.0	0.0	0.0	0.2	0.6	3.2	4.2	5.8	7.1	9.4	15.5	16.9	15.7	22.7	2.6	3.5	6.9
C54 Corpus Uteri	0.0	0.0	0.0	0.0	0.0	0.0	0.0	0.0	0.0	0.4	1.4	1.6	1.3	2.0	3.9	5.3	0.3	0.5	0.7
C55 Uterus	0.0	0.0	0.0	0.0	0.0	0.0	0.0	0.1	0.2	0.2	1.4	1.6	0.9	4.1	5.5	3.8	0.4	0.5	0.6
C56 Ovary	0.0	0.0	0.0	0.0	0.4	0.5	0.4	1.5	2.0	4.0	7.1	8.3	11.2	12.3	20.4	23.5	2.2	2.9	5.1
C58 Placenta	0.0	0.0	0.0	0.0	0.0	0.0	0.0	0.0	0.0	0.0	0.0	0.0	0.0	0.0	0.0	0.0	0.0	0.0	0.0
C64-65 Kidney	0.1	0.0	0.0	0.1	0.0	0.0	0.0	0.0	0.0	0.2	0.8	1.6	0.4	1.5	0.8	4.5	0.2	0.3	0.4
C66-68 U.Bladder	0.0	0.0	0.0	0.0	0.0	0.0	0.1	0.0	0.0	0.0	0.0	0.8	0.9	1.0	2.4	2.3	0.1	0.2	0.2
C69 Eye	0.1	0.0	0.0	0.0	0.0	0.0	0.0	0.0	0.0	0.0	0.0	0.0	0.0	0.0	0.0	0.0	0.0	0.0	0.0
C70-72 Brain	0.0	0.2	0.2	0.2	0.1	0.3	0.3	0.5	0.7	1.0	1.1	1.6	4.3	3.1	3.9	6.1	0.7	0.8	1.4
C73 Thyroid	0.0	0.0	0.0	0.0	0.0	0.0	0.0	0.0	0.0	0.0	0.3	0.8	0.4	1.5	2.4	4.5	0.2	0.2	0.2
C74-75 Oth.Endo.Gland	0.0	0.0	0.0	0.0	0.0	0.0	0.0	0.0	0.0	0.0	0.0	0.4	0.0	0.5	0.0	0.8	0.0	0.0	0.1
C76 Ill Diff sites	0.0	0.0	0.0	0.0	0.0	0.0	0.0	0.1	0.2	0.6	0.3	1.6	0.9	0.0	0.0	2.3	0.2	0.2	0.5
C77 Sec.Lymphnodes	0.0	0.0	0.0	0.0	0.0	0.1	0.0	0.1	0.2	0.2	0.0	0.0	0.4	0.0	0.8	1.5	0.1	0.1	0.2
C78 Sec.Res.& Dig.Sys	0.0	0.0	0.0	0.0	0.0	0.0	0.0	0.3	0.4	0.8	0.8	0.8	0.9	0.5	1.6	4.5	0.2	0.3	0.6
C79 Sec.Others	0.0	0.0	0.0	0.0	0.0	0.0	0.3	0.0	0.0	0.2	0.0	0.0	1.3	1.0	0.8	0.0	0.1	0.1	0.2
C80 Prim Unk	0.0	0.0	0.0	0.0	0.1	0.1	0.1	0.7	0.9	1.9	2.0	3.9	4.7	7.7	7.1	15.9	1.0	1.4	2.1
C81 Hodgkin Lymphoma	0.0	0.0	0.1	0.0	0.0	0.0	0.0	0.0	0.0	0.0	0.3	0.0	0.0	1.5	0.0	0.8	0.1	0.1	0.0
C82-85 N.H.Lymphoma	0.0	0.1	0.1	0.1	0.1	0.0	0.3	0.1	0.2	1.0	2.3	0.8	2.6	7.7	8.6	10.6	0.7	1.0	1.1
C90 Mult-Myeloma	0.0	0.0	0.0	0.0	0.0	0.0	0.0	0.1	0.2	0.4	1.1	0.8	1.7	2.0	2.4	4.5	0.3	0.4	0.6
C91 Leuk-Lymphoid	0.5	0.7	0.3	0.5	0.0	0.2	0.1	0.3	0.4	0.4	0.0	0.0	0.9	0.5	0.8	1.5	0.3	0.4	0.3
C92 Leuk-Myeloid	0.4	0.5	0.3	0.5	0.5	0.2	0.6	0.5	0.7	0.8	0.8	1.6	2.6	3.1	3.1	5.3	0.8	0.9	1.1
C95 Leuk-Unsp	0.0	0.0	0.3	0.1	0.0	0.0	0.3	0.0	0.0	0.0	0.8	0.4	0.0	0.5	0.8	0.8	0.2	0.2	0.2
Total All Sites	1.5	1.6	1.5	1.9	2.0	3.1	7.5	18.9	25.3	45.0	72.1	95.3	118.1	163.3	240.7	339.1	26.9	35.5	56.4

Publications:

I. Research Papers:	
1.	Cancer Incidence in Greater Bombay: Assessment of cancer risk by age. Jussawalla DJ, Haenszel W, Deshpande VA and Natekar MV, British Journal of Cancer, 22, 623-636, 1968.
2.	Histological typing of cancer in Greater Bombay: An analysis of the community and the total countries, Jussawalla DJ, Deshpande VA, and Pai AN, Indian Journal of Cancer, 7, 1-13, 1970.
3.	Differences observed in the site incidence of cancer between the Parsi community and the total population of Greater Bombay: A critical Appraisal. Jussawalla DJ, Deshpande VA, Haenszel W, and Natekar MV, British Journal of Cancer, 24, 56-66, 1970.
4.	Assessment of risk patterns in cancer of the cervix: A comparison between Greater Bombay and Western Countries. Jussawalla DJ, Deshpande VA, and Standfast SJ, International Journal of Cancer, 7, 259-268, 1971.
5.	Evaluation of cancer risk in tobacco chewers and smokers: An epidemiologic assessment. Jussawalla DJ and Deshpande VA, Cancer, 28, 244-252, 1971.
6.	Epidemiology of esophageal cancer: Special report of the International seminar, Jussawalla D, International Journal of Cancer, 10, 436-441, 1972.
7.	Cancer Incidence Patterns in the subcontinent of India, Jussawalla DJ, Proceedings of the Royal Society of Medicine, 66, 308-312, 1973.
8.	Establishment of Cancer registration system in India, Jussawalla DJ, The Indian Journal of Cancer, 10, 125-27, 1973.
9.	Objectives, Planning, and Utility of Population Based Cancer Registries, Jussawalla DJ, Indian Academy of Medical Sciences, 10, 103-109, 1974.
10.	Public education in Cancer, Jussawalla DJ, Excerpta Medica, International Congress Series No.352, Bol.4, 1974.
11.	The persistence of difference in cancer incidence at various anatomical sites 1300 years after immigrations, A Study of the parsi community in India: Recent results in cancer research 50, 170-181, 1975.
12.	Cancer incidence in Greater Bombay, (1964-1972): A Comparative Study, Jussawalla DJ, Yeole BB and Natekar MV, Indian Journal of Cancer, 12, 135-143, 1975.
13.	Epidemiology of breast cancer in India, Jussawalla DJ, Yeole BB and Natekar MV, Indian Journal of Cancer, 12, 231-242, 1975.
14.	Cancer Registry is as an essential pre-requisite to cancer control, Jain DK, Indian Journal of Cancer, 12, 263-268, 1975.
15.	Epidemiology of breast cancer in Greater Bombay, Jussawalla DJ, Jain DK, In proceedings of the Second Asian Cancer Conference, Singapore, 203-212, 1976.
16.	The problems of cervical and mammary cancer in India, Jussawalla DJ, and Jain DK, Indian Academy of Medical Science, 12, 1-12, 1976.
17.	Breast Cancer and religion and Greater Bombay: An epidemiological study of 2,130 women over a 9-year period. Jussawalla DJ., Jain DK, British Journal of Cancer, 36, 634-638, 1977.
18.	Lung Cancer in Greater Bombay: Correlations with religion and smoking habits, Jussawalla DJ, and Jain DK, British Journal of Cancer, 40, 437-447, 1979.
19.	Cancer in the Sindhi Populations of Greater Bombay, Jussawalla DJ., Yeole BB, Natekar MV and Rajgopalan TR, Cancer, Vol.46, 2107-2115, 1980.
20.	Difference in site patterns of cancer in Sindhi and Parsi sub-groups and General populations of Greater Bombay, Jussawalla DJ, Yeole BB, Natekar MV, Rajgopalan TR, Indian Journal of Cancer, 17, 78-88, 1980.
21.	Population base cancer registry: Need an importance to the community, Jussawalla DJ, and Yeole BB, Indian Journal of Cancer, Vol.17, 146-148, 1980.
22.	Geographical variations in cancer incidence in two urban populations in India, Jussawalla DJ, Yeole BB, Natekar MV, and Rajgopalan TR, Indian Journal of Cancer, 80, 91-88, 1981.
23.	Resources necessary for the efficient operation of Population based cancer registry. Jussawalla DJ, Yeole BB, Indian Journal of Cancer, 18, 171-175, 1981.
24.	Histological and epidemiological features of breast cancer in different religious groups in Greater Bombay, Jussawalla DJ, Yeole BB, Natekar MV, Journal of Surgical Oncology, 18, 269-279, 1981.
25.	Oesophageal Cancer in India, Jussawalla DJ, Journal of Cancer Research and Clinical Oncology, 99, 29-33, 1981.
26.	An Assessment of Cancer mortality in Greater Bombay, Jussawalla DJ, Yeole BB, Natekar MV, Indian

	Journal of Medical Research, New Delhi, 75, 68-82, 1982.
27.	Benign and Malignant ovarian tumors in a general hospital material from Greater Bombay, Docto VM, Simha MR, Yeole BB, Natekar MV, and Jussawalla DJ. International Survey of Distribution of Histological types of tumors of testis and ovary. UICC Technical Report Series, Geneva, 75, 281-290, 1983.
28.	Ovarian Cancer in Greater Bombay, Doctor VM, Sampat MB, Talwalkar GV, Yeole BB, Simha MR, Natekar MV, and Jussawalla DJ. International Survey of Distributions of Histologic Types of Tumors of Testis and Ovary. UICC Technical Report Series, Geneva, 75, 173-184, 1983.
29.	Epidemiology and Etiology of cancer of cervix in Greater Bombay, Jussawalla DJ, Yeole BB, Journal of Surgical Oncology, New York, 26, 53-62, 1984.
30.	Cancer Incidence in Aurangabad City, Jussawalla DJ, Sathe PV, Yeole BB, Natekar MV, Indian Journal of Cancer, Bombay, 21, 55-62, 1984.
31.	Population Based Cancer Registry, Yeole BB, In Principles and Practice of Statistics in Medicine Eds. Srivastava RN, Varma BN, Shukla GD, Himalaya Publishing House, Bombay, 241-249, 1985.
32.	Cancer in Indian Muslims. Jussawalla DJ, Yeole BB, Natekar MV, Cancer, Philadelphia, 55, 1149-1158, 1985.
33.	Cancer Incidence Indian Christians, Jussawalla DJ, Yeole BB, Natekar MV, British Journal of Cancer, 51, 883-891, 1985.
34.	Establishment of Cancer Registry System in India. Jussawalla DJ, Yeole BB, In Punjab University Alumni Associations magazine, "The FU Aluminus", Chandigarh, 1985.
35.	Cancer in young adults in Greater Bombay, Jussawalla DJ, Yeole BB, Journal of Surgical Oncology, 30, 244-251, 1985.
36.	Cancers of the Upper Alimentary and Rescuratory Tracts in Bombay, India: A Study of incidence over two decades, Jayant K, and Yeole BB, British Journal of Cancer, 56, 846-848, 1987.
37.	An Epidemiological study of malignant melanoma in Greater Bombay. Jussawalla DJ, Yeole BB, Indian Journal of Cancer, Bombay, 25, 70-76, 1988.
38.	An Assessment of Reliability and Completeness of Bombay Cancer Registry Data. Yeole BB, Jussawalla DJ, Indian Journal of Cancer, Bombay, 25, 177-190, 1988.
39.	Childhood cancers in Greater Bombay, Jussawalla DJ, Yeole BB, Natekar MV, Indian Journal of Cancer, Bombay, 25, 197-206, 1988.
40.	Cancer Incidence in Indian Christians, Yeole BB : In proceedings of the third annual conference of Indian Society of Medical Statistics, Himalya Publishing House, 92-105, 1988.
41.	Epidemiology of Breast cancer in India with special reference of the Parsi Community. In Current Perspectives in Breast Cancer. Eds. Mithra I and Desai PB. Tata McGraw Hill Publishing Co. New Delhi, 11-19, 1988.
42.	Early Detection of Breast Cancer in Developing Countries, Mithra I, Yeole BB, and Jussawalla DJ. The Lancet, London, pp, 719-720, 1989.
43.	Declining Trend in Cervical Cancer Incidence in Greater Bombay. Yeole BB, Jayant K, and Jussawalla DJ, Journal of Surgical Oncology, New York, 42, pp 262-271, 1989.
44.	High Mortality rate from breast cancer in Greater Bombay, Potential for early detection by physical examination, Mitra I, Yeole BB, and Jussawalla DJ, Journal of Cancer Detection and Prevention, New York, 1989.
45.	Incidence and Etiology of Multiple Myeloma in Greater Bombay. Indian Journal of Cancer, 27, pp 88-93, 1990.
46.	Trends in Breast Cancer Incidence in Greater Bombay. An Epidemiological Assessment. Yeole BB, Jayant K and Jussawalla DJ. Who Bulletin, Geneva, 68, pp 245-249, 1990.
47.	Geographic Differences in Cancer Incidence by Sex of Various sites in City Wards in Greater Bombay. Jussawalla DJ, Yeole BB, and Natekar MV, Indian Journal of Cancer, 27, pp 20-27, 1990
48.	Tobacco Related Cancers in Bombay, India A study of incidence over two decades. Jayant K and Yeole BB. In control of Tobacco Related Cancers and other diseases , Eds, Gupta PC, Hamner JE, Murthy PR, Bombay, pp, 139-148, 1992.
49.	Cancer Incidence and Trends in Greater Bombay. Yeole B.B. and Jussawalla DJ. European Journal of Cancer, Oxford,25, PP 1926-1928,1992.
50.	Trends in Cancers of the Upper Alimentary and Respiratory Tracts in Women in Bombay, India. Yeole BB, Jayant K, Natekar MV, and Jussawalla DJ. International Journal of Oncology, Athens,3, PP 1015-1018, 1993
51.	Is Cancer of the Uterine Cervix on the Decline in Bombay City? Notani PN and Yeole BB. Indian Journal of Cancer, Bombay, 32, PP 149-151, 1995.

52.	Descriptive Epidemiological Assessment of Cancers of the Breast, Ovary and Uterine Corpus in Greater Bombay. Yeole BB, Jussawalla DJ. <i>Oncology Reports</i> , Athens,4, PP 455-462, 1997.
53.	Descriptive Epidemiology of Cancers of the Male Genital Organs in Greater Bombay. Yeole BB, Jussawalla DJ, <i>Indian Journal of Cancer</i> , Bombay, 31, PP 30-39, 1997.
54.	Cancer in Indian in the Year 2001. An Epidemiological Study. Yeole BB, Ph.D. Dissertation, University of Tampere, Finland, 1997.
55.	Vasectomy and Prostate Cancer: A Case Control Study in India. Platz EA, Yeole BB, Vho E, Jussawalla DJ, Giovannucci E and Ascherio A. <i>International Journal of Epidemiology</i> , Liverpool, 26,PP 933-938, 1997.
56.	Survival from Breast and Cervix Cancer in Bombay. Yeole BB, Jussawalla DJ, Sabnis SD and Sunny Lizzy. In <i>Survival from Cancer in Developing Countries monograph</i> , Eds Sankaranarayan R, Black RJ, and Parkin DM. IARC, Scientific Publication, 145, Lyon, 1997.
57.	Descriptive Epidemiology of Urinary Organs in Greater Bombay. Yeole BB and Jussawalla DJ. <i>Indian Journal of Medical Research</i> , New Delhi,106, PP, 517-523, 1997.
58.	Increasing Trends in Incidence of Adeno Carcinoma of the Cervix Uteri from 1965-1985 in Bombay. Krishnamurthy S, Yeole BB and Jussawalla DJ. <i>Journal of Obstetrics and Gynecology Research Japan</i> . 23, PP 521-527, 1997.
59.	Descriptive Epidemiology of Lymphatic Malignancies in Greater Bombay, Yeole BB and Jussawalla DJ. <i>Oncology Reports</i> , Athens,5, PP 1-7, 1998.
60.	Descriptive Epidemiology of Haemopoietic Malignancies in Greater Bombay, Yeole BB, Jussawalla DJ, Advani SH, <i>National Medical Journal of New Delhi</i> ,11, 115-120, 1998.
61.	Descriptive Epidemiology of Bone Cancers in Greater Bombay, Yeole BB and Jussawalla DJ. In <i>Indian Journal of Cancer</i> , Vol.35,PP 101-106, 1998.
62.	Descriptive Epidemiology of Thyroid Cancers in Greater Bombay, Yeole BB and Jussawalla DJ, In <i>Indian Journal of Cancer</i> , Vol.35,PP 57-64, 1998.
63.	Long Term Survival from Uterine Cervical Cancer in Bombay. India, Yeole BB, Sankaranarayan R and Jussawalla DJ, <i>International Journal of Cancer</i> , 78, 394-395,1998.
64.	Attributable Causes of Survival among Leading Cancer in Greater Sites in Greater Bombay, Ramarao G, Ramankumar AV, Yeole BB. In <i>Proceedings of International Conference on Stochastic Processes and Their Applications at Chennai</i> , 199, PP 50-60,1998.
65.	Bladder Cancer in Bombay, India, Yeole BB, <i>Ostomy International</i> , Bombay,21, PP 26-27,1999.
66.	Trends and Predictions in Cancer Incidence in Greater Bombay, Yeole BB, <i>Indian Journal of Cancer</i> ,36, PP 167-187,1999.
67.	Cancer Mortality in Greater Bombay, BB Yeole In "Counting the Death in India in the 21 st Century". <i>Proceedings of the International Workshop on Certification of Causes of Death</i> , Tata Institute of Fundamental Research, Bombay,India,1999.
68.	Trends in Cancer Incidence in Greater Bombay, Yeole BB,Cancer Strategy, IARC, Lyon, France 7, PP 1-6,2000.
69.	Survival from Head and Neck Cancer in Bombay, India, Yeole BB, Sankaranarayan R, Lizzy Sunny, Swaminathan R and Parkin DM, <i>CANCER, USA</i> ,89/2,PP 437-444,2000.
70.	Population based Survival from Colo-Rectal Cancer in Mumbai (Bombay), India. Yeole BB, Lizzy Sunny, Swaminathan R, Sankaranarayan R and Parkin DM, <i>European Journal of Cancer</i> , UK, 2001.
71.	An Epidemiological Features of Childhood Cancers in Greater Bombay, Yeole BB, Advani SH and Lizzy Sunny, <i>Indian pediatrics</i> , New Delhi, Vol 38, 1270-1277,2001.
72.	An Assessment of Cancer Incidence Patterns in parsi and Non-Parsi Population. Yeole BB, Advani SH, Kurkure AP and Lizzy Sunny, <i>Asian Pacific Journal of Cancer Prevention</i> , Bangkok, Vol 2,PP 293-298, 2001.
73.	An Assessment of Improvement in Reliability and Completeness of Mumbai Cancer Registry data from 1965-1997, Yeole BB, <i>Asian Pacific Organization for Cancer Prevention</i> , Bangkok, Vol 2, PP 225-232,2001.
74.	Epidemiological assessment of Lung Cancer in India, BB Yeole, <i>Proceedings of NAPCON-2001</i> . Mumbai, PP 184-188, 2001.
75.	Population based Survival from Prostate Cancer in Bombay ,India , BB Yeole and Lizzy Sunny, <i>Indian Journal of Cancer</i> , Bombay, India, Vol 38, 126-132, 2001.
76.	Retinoblastoma: An Epidemiological Appraisal in Reference to Mumbai Population. India. Yeole BB and Advani SH, <i>Asian Pacific Journal for Cancer Prevention</i> , Bangkok, Vol. 13, PP 17-22, 2002.
77.	Cancer in Women in India, An Epidemiological assessment, BB Yeole. Published in <i>Asian Pacific Journal</i>

	for Cancer Prevention, Bangkok, Vol 3, PP 137-142, 2002.
78.	An Epidemiological Assessment of Increasing Incidence and Trends in Breast Cancer in Mumbai- India, during last Two Decades. BB Yeole, AP Kurkure, Published in Asian Pacific Journal for Cancer Prevention, Bangkok, Vol 14, PP 51-56,2003.
79.	Survival from Glottic and Supraglottic Laryngeal Carcinoma in Mumbai (Bombay), India BB Yeole,, R Sankarnarayan, and AV Ramankumar. Oral Oncology, Vol..9, PP 659-663,2003.
80.	Survival from Oral Cancers in Mumbai (Bombay), India. BB Yeole, AV Ramankumar and R Sankarnarayan. 'Cancer Cause and Control', Vol.14 , PP 945-952,2003.'
81.	Population base survival from Cancers having a Poor Prognosis in Mumbai (Bombay), India. BB Yeole, AV kumar. Asian Pacific J Cancer Prev,5,175-182,2004.
82.	Decreasing trend in the Incidence of Stomach Cancer in Mumbai, India, during 1988 to 1999. Lizzy Sunny, Yeole BB, Shiri R, Mathews S, Falah Hassani K, Advani SH, Asian Pacific J Cancer Prev,5 (2), 169-174,2004.
83.	Oral Cancer in Mumbai, India: A Fifteen Year perspective with Respect to Incidence Trends and Cumulative Ris. Lizzy Sunny, Yeole BB, Hakama M, Shiri R, PSRK Sastri, Mathews S, Advani SH, Asian Pacific J Cancer Prev,5 (3), 294-300,2004.
84.	Population-based Survival from Cancer of Breast, Cervix and Ovary in Women in Mumbai, India. BB Yeole, VR Kumar, Arun Kurkure, Lizzy Sunny. Asian Pacific J Cancer Prev,5 (3), 308-315, 2004.
85.	Cumulative Risk and Trends in Prostate Cancer Incidence in Mumbai, India, 1986 to 2000. Lizzy Sunny, Yeole BB, Hakama M, Kurkure AP , Mathews S, Shastri NG, Advani SH, Asian Pacific J Cancer Prev,5 (4), 401-405,2004.
86.	Coping Mechanism among Long- Terms survivors of Breast And Cervical Cancer in Mumbai, India. Agnihotram V, Ramanakumar, Yeole BB, Garimella Ramarao, Asian Pacific J Cancer Prevention, Vol.6, 189-194,2005.
87.	Assessing Cancer Burden in Rural India: An Analysis by Cause of Death Statistics, AV Ramanakumar, BB Yeole, Asian Pacific J Cancer Prevention, Vol.6, 221-223, 2005.
88.	An Epidemiology of Cancer in Particular Reference to India, BB Yeole. In : CANCER – A Cytogenetic and Molecular Approach. Bioved Research Society, Allahabad, India,31 –55,2005.
89.	Respiratory Cancer – Population Based Survival in Mumbai, India, BB Yeole, Asian Pacific Journal of Cancer Prevention, Vol.6, 449-454, 2005.
90.	Social Inequalities in Cancer with special reference to South Countries, AP Kurkure, BB Yeole, Asian Pacific Journal of Cancer Prevention, Vol7, 36-40, 2006.
91.	Epidemiological Assessment of Lung Cancer in India, BB Yeole, and AP Kurkure. In the Oncology Knowledge Bank; Lung Cancer, Vol.2006, 9-18, Mumbai, India, 2006.
92.	Social inequalities in Cancer, AP Kurkure & BB Yeole. In Cancer Awareness, Prevention and Control: Strategies for South Asia, 29-39, UICC, Geneva, 2006.
93.	Geographic Variation in Cancer Incidence and its Patterns in Urban Maharashtra, 2001. AP Kurkure, BB Yeole, and SS Koyande. Asian Pacific Journal of Cancer Prevention. Vol. 7, 385-390, 2006.
94.	Role of Cancer Registries in Determining in Cancer Mortality in Asia. BB Yeole, Asian Pacific Journal of Cancer Prevention. Vol.7, 469-471, 2006.
95.	Role of the cancer registries in determining cancer mortality in Asia, BB Yeole, Radiology And Oncology, 41(4), 211-214, 2007.
96.	Cancer Incidence in Indians from Three Areas: Delhi and Mumbai, India, and British Columbia, Canada, Thomas Gregory Hislop, Chris D, Bajdik, Sita Ram Saroa, BB Yeole, Maroa Cristina Barrocetavena, J Immigrant Minority Health, 9, 221-227, 2007.
97.	Trends in Cancer Incidence in Head and Neck Cancers in India, BB Yeole, Asian Pacific Journal of Cancer Prevention, Vol. 8, No, 4, 2008.

II.	Monographs :
1.	Cancer in Greater Bombay, 1964, Jussawalla DJ, Deshpande VA, Natekar MV, Bombay Cancer Registry, Indian Cancer Society, Mumbai, 1966.
2.	Cancer in Greater Bombay, 1964-66, , Jussawalla DJ, Deshpande VA, Natekar MV, Bombay Cancer Registry, Indian Cancer Society, Mumbai, 1966.
3.	Oesophageal Cancer- Monograph. Edited by Jussawalla DJ, Sir Richard Doll, UICC, Bangalore, India, 1971.
4.	Cancer in Greater Bombay, 1967-69, Jussawalla DJ, Yeole BB, Natekar MV, Bombay Cancer Registry, Indian Cancer Society, Mumbai, 1973.
5.	Cancer in Greater Bombay, 1970-72, Jussawalla DJ, Jain DK, Yeole BB, Natekar MV, Bombay Cancer Registry, Indian Cancer Society, Mumbai, 1976.
6.	Cancer Incidence in Poona City agglomeration 1972-74, Jussawalla DJ, Yeole BB, Sathe PB, Natekar MV, Bombay Cancer Registry, Indian Cancer Society, Mumbai, 1979.
7.	Trends in Cancer Incidence 1964-72, Jussawalla DJ, Jain DK, Yeole BB, Natekar MV, Rajgopalan TR, Bombay Cancer Registry, Indian Cancer Society, Mumbai, 1980.
8.	Cancer Incidence in Greater Bombay 1973-75, Jussawalla DJ, Jain DK, Yeole BB, Natekar MV, Bombay Cancer Registry, Indian Cancer Society, Mumbai, 1980.
9.	Cancer Morbidity and Mortality in Poona city agglomeration, 1975-77, Jussawalla DJ, Shahu U, Yeole BB and Natekar MV, Bombay Cancer Registry, Indian Cancer Society, 1979.
10.	Cancer Morbidity and Mortality in Pune city agglomeration, 1978-80, Jussawalla DJ, Shahu U, Yeole BB and Natekar MV, 1983.
11.	Cancer Morbidity and Mortality in Pune city agglomeration, 1978-80, Jussawalla DJ, Shahu U, Yeole BB and Natekar MV, 1983.
12.	Cancer Incidence in Greater Bombay (By Religion and Sex), 1973-78, Jussawalla DJ, Yeole BB and Natekar MV, 1984.
13.	Cancer Incidence in Aurangabad City, 1978-1980, Jussawalla DJ, Sathe PV, Yeole BB and Natekar MV, 1984.
14.	Cancer Morbidity and Mortality in Greater Bombay, 1983. Jussawalla DJ, Yeole BB and Natekar MV, 1984.
15.	Cancer Morbidity and Mortality in Greater Bombay, 1984. Jussawalla DJ, Yeole BB and Natekar MV, 1986.
16.	Cancer Morbidity and Mortality in Greater Bombay, 1985. Jussawalla DJ, Yeole BB and Natekar MV, 1987.
17.	Cancer Morbidity and Mortality in Nagpur City, 1980-84. Jussawalla DJ, Deshmukh NK, Gandhe ML, Yeole BB and Natekar MV, 1987.
18.	Cancer Morbidity and Mortality in Pune city, 1981-85. Jussawalla DJ, Natu M, Yeole BB and Natekar MV, 1988.
19.	Cancer Incidence in Greater Bombay by Age, Sex and Ward, 1979-84. Jussawalla DJ, Yeole BB and Natekar MV, 1988.
20.	Cancer Morbidity and Mortality in Greater Bombay, 1986-87. Jussawalla DJ, Yeole BB and Natekar MV, 1989.
21.	Cancer Morbidity and Mortality in Greater Bombay, 1988. Jussawalla DJ, Yeole BB and Natekar MV, 1990.
22.	Cancer Morbidity and Mortality in Greater Bombay, 1989. Jussawalla DJ, Yeole BB and Natekar MV, 1991.
23.	Cancer Morbidity and Mortality in Nagpur City, 1985-89. Jussawalla DJ, Yeole BB, Deshmukh NK, Natekar MV and Bapat GM, 1991.
24.	Cancer Morbidity and Mortality in Greater Bombay, 1990. Jussawalla DJ, Yeole BB and Natekar MV, 1992.
25.	Cancer Morbidity and Mortality in Pune City, 1986-90. Jussawalla DJ, Natu M, Yeole BB and Natekar MV, 1993.
26.	Cancer Morbidity and Mortality in Greater Bombay, 1991. Jussawalla DJ, Yeole BB and Natekar MV, 1993.
27.	Cancer Morbidity and Mortality in Greater Bombay, 1992. Jussawalla DJ, Yeole BB, Natekar MV and Lizzy Sunny, 1995.

28.	Cancer Morbidity and Mortality in Greater Bombay, 1993. Jussawalla DJ, Yeole BB, Natekar MV and Lizzy Sunny, 1995.
29.	Cancer Morbidity and Mortality in Greater Bombay, 1994. Jussawalla DJ, Yeole BB, Natekar MV and Lizzy Sunny, 1997.
30.	Cancer Morbidity and Mortality in Greater Bombay, 1995. Jussawalla DJ, Yeole BB and Lizzy Sunny, 1998.
31.	Cancer Morbidity and Mortality in Pune City, 1991-95. Jussawalla DJ, Yeole BB, Pratinidhi AK and Lizzy Sunny, 1998.
32.	Cancer Morbidity and Mortality in Nagpur City, 1990-94. Jussawalla DJ, Yeole BB, Deshmukh NK and Lizzy Sunny, 1998.
33.	Cancer Morbidity and Mortality in Greater Bombay, 1996. Jussawalla DJ, Yeole BB and Lizzy Sunny, 1999.
34.	Cancer Morbidity and Mortality in Greater Bombay, 1997. Jussawalla DJ, Yeole BB and Lizzy Sunny, 2001.
35.	Cancer Morbidity and Mortality in Greater Bombay, 1998. Kavarana NM, Kamat MR, Kurkure AP, Yeole BB and Lizzy Sunny, 2001.
36.	Cancer Morbidity and Mortality in Greater Bombay, 1999. Kavarana NM, Kamat MR, Kurkure AP, Yeole BB and Methar SK, 2001.
37.	Cancer Morbidity and Mortality in Pune City, 1996-2000 Kavarana NM, Kamat MR, Kurkure AP, Yeole BB, Pratinidhi AK, Koppikar CB, Sunny Lizzy and Kavita CJ, 2003.
38.	Cancer Morbidity and Mortality in Nagpur City, 1995-99. Kavarana NM, Kamat MR, Kurkure AP, Yeole BB, Varsha S, Sunny Lizzy and Kavita CJ, 2003.
39.	Cancer Morbidity and Mortality in Greater Bombay, 2000. Kavarana NM, Kamat MR, Kurkure AP, Yeole BB and Lizzy Sunny, 2003.
40.	Cancer Incidence and Mortality in Greater Bombay, 2001. Kurkure AP, Yeole BB, Sunny Lizzy and Koyande SS, 2005.
41.	Cancer Incidence Patterns in Urban Maharashtra, 2001. Kurkure AP, Yeole BB, and Koyande SS, 2005.
42.	Cancer Incidence in Aurangabad City Agglomeration 1995-2004, Kurkure AP, Yeole BB, Shewalkar BK, Koyande SS, and Shastri NG, 2006
43.	Cancer Incidence and Mortality in Greater Bombay, 2002-04. Kurkure AP, Yeole BB and Koyande SS, 2008
44.	Cancer Incidence and Mortality in Pune City, 1991-2005 Kurkure AP, Yeole BB, JK Joshi, SS Jawdekar Koyande SS, Jadhav KC and Vagal RP , 2008.

APPENDIX

Calculation of rates and ratios

Age specific rates are calculated by dividing the number of cases in each 5 year age and sex stratum by corresponding population estimate for that stratum and multiplying the product by 100,000 to give the rates per 100,000.

Crude rates are calculated by the same way using total cancer cases and total cases and total population base by sex.

Age adjusted rates are calculated by summing the products of the age specific rates and the world standered population strata. They provide a rate which is independent of the age structure of the population of interest and are therefore useful in making comparisons between different populations, time periods etc.

Cumulative rates are calculated by multiplying the five year age specific rates per person by 5 and summing over age groups from 0-4 to 70-74. This rate is then expressed as a percentage. This rate is a good indicator of life time risk.