

**AURANGABAD CANCER REGISTRY
DIVISION OF
THE MUMBAI CANCER REGISTRY**

**CANCER INCIDENCE
IN
AURANGABAD CITY
AGGLOMERATION
2005-2009**

**THE INDIAN CANCER SOCIETY
PAREL, MUMBAI- 400012.
INDIA
2012**

**AURANGABAD CANCER REGISTRY
DIVISION OF
THE MUMBAI CANCER REGISTRY**

**CANCER INCIDENCE
IN
AURANGABAD CITY AGGLOMERATION
2005-2009**

Dr.A.P.Kurkure M.S.

Hon. Secretary and Principal Investigator ,
Mumbai Cancer Registry,
Hon.Secretary & Managing Trustee,
Indian Cancer Society.

Dr.B.K.Shewalkar, M.D.

Hon.Secretary,
Aurangabad Cancer Registry,
Indian Cancer Society.

Mrs.S.S.Koyande

Executive In-Charge
Mumbai Cancer Registry,
Indian Cancer Society.

Ms.Vaishali Thorat

Research Assistant,
Mumbai Cancer Registry,
Indian Cancer Society

Mrs. Anupama Phadke

Graduate Assistant
Mumbai Cancer Registry,
Indian Cancer Society

**THE INDIAN CANCER SOCIETY
PAREL, MUMBAI- 400012.
INDIA
2012**

Acknowledgements

The Aurangabad Cancer Registry Division of the Mumbai Cancer Registry became operative in January, 1978 as a collaborative effort with Aurangabad Medical College. The staff members of the department of the Radiotherapy at the Medical College were entrusted with day-to-day work relating to the registry.

In this publication "Cancer Incidence in the Aurangabad City Agglomeration data has been thoroughly analyzed by sex, site, age, method of diagnosis, religion, language, education and histology, and is based on all new cancer cases diagnosed in the resident population of Aurangabad City Agglomeration during the 10 year period, 1st January 1995 to 31st December 2004.

The major bulk of the cancer cases registered are abstracted from Aurangabad Medical College and Seth Nandlal Dhoot Hospital. The registry staff is also grateful to the various hospital administrators, their staff members and medical specialists in private practitioners, who have co-operated with us by permitting our social investigators to collect the data on cancer patients in their care.

The Executive Health Officer of the Aurangabad Municipal Corporation deserves special mention and we sincerely thank him for making death records of the city population freely available to us. We also wish to thank the Director of Census Operations of the Maharashtra State, for supplying us with the population break-down according to age, sex, and religion for Aurangabad City Agglomeration. We are indebted to the Dean of Aurangabad Medical College, Aurangabad for providing adequate office space for our registry.

We are thankful to International Agency for Research on Cancer, Lyon, France for providing financial help for entering entire data used for this publication in Canreg-4 Software.

Staff of Aurangabad Cancer Registry

Mr. Ashok Maruti Waghmare, M.A
Medical Social Investigator

Mr. Sayyed Ayub Ali.
Part time Clerk-cum-Typist

Contents

Historical Background	7
Demographic Characteristics	8
Population Estimates	9
Cancer Registration System	10
Working of the Registry	10
Cancer Incidence Reporting System	11
Results	
Site	12
Age	12
Method of Diagnosis	17
Religion	18
Mother Tongue	20
Marital Status	21
Education	21
Histology	23
Tobacco Related Cancers	24
Childhood Cancers	25
Tables	26
Publications	44

No	Tables	Page
1.	Estimated Resident Population by Age and Sex as on 1 st July 2007, Aurangabad, Total Population (All Religious Communities)	27
2.	Estimated Resident Population by Religion and Sex, Aurangabad (As on 1 st July 2007)	27
3.	Number of Incidence Cases of Cancer by Site group and Year of Registration, with percentages, Aurangabad, Male 2005-2009.	28
4.	Number of Incidence Cases of Cancer by Site group and Year of Registration, with percentages, Aurangabad, Female 2005-2009.	28
5	Number of Incidence Cases of Cancer by Site (ICD-10) and Year of Registration, with percentages, Aurangabad, Male 2005-2009.	29
6	Number of Incidence Cases of Cancer by Site ((ICD-10) and Age) with Percentages, Aurangabad, 2005-2009, Female.	30
7	Average Annual Age-Specific, World Age Adjusted, by site Truncated (35-64) Incidence Rates of Cancer Cases Per 100,000 Persons, Aurangabad, 2005-2009, Male.	31
8	Average Annual Age-Specific, World Age Adjusted, Truncated (35-64) Incidence Rates of Cancer Cases Per 100,000 Persons, Aurangabad, 2005-2009, Female	32
9	Incidence Cases of Cancer by Most Valid Basis of Diagnosis and Site (ICD-10) with Percentages, Aurangabad, 2005-2009, Male	33
10	Incidence Cases of Cancer by Most Valid Basis of Diagnosis and Site (ICD-10) with Percentages, Aurangabad, 2005-2009, Female	34
11	Incidence Cases of Cancer by Religion and Site (ICD-10) with Crude Rates per 100,000 Population, Aurangabad, 2005-2009, Male	35
12	Incidence Cases of Cancer by Religion and Site (ICD-10) with Crude Rates per 100,000 Population, Aurangabad, 2005-2009, Female	36
13	Incidence Cases of Cancer by Language and Site (ICD-10) with Percentages, Aurangabad, 2005-2009, Male.	37
14	Incidence Cases of Cancer by Language and Site (ICD-10) with Percentages, Aurangabad, 2005-2009, Female	38
15	Incidence Cases of Cancer by Marital Status and Site (ICD-10) with Percentages, Aurangabad, 2005-2009, Male	39
16	Incidence Cases of Cancer by Marital Status and Site (ICD-10) with Percentages, Aurangabad, 2005-2009, Female	40
17	Incidence Cases of Cancer by Education and Site (ICD-10) with Percentages, Aurangabad, 2005-2009, Male.	41
18	Incidence Cases of Cancer by Education and Site (ICD-10) with Percentages, Aurangabad, 2005-2009, Male.	42
19	Number of incidence cases of Cancer by Primary Histology (ICDO-3) and Sex with Percentages, 2005-2009, Aurangabad	43

Historical Background

The Mumbai Cancer Registry was established in June 1963 as a unit of the Indian Cancer Society, at Mumbai, with the aim of obtaining reliable morbidity data on cancer, from a precisely defined urban population (Greater Mumbai). The actual compilation of data could however only begin in 1964. Until then, no continuing surveys had ever been undertaken anywhere in India. Initially, up to 1975, the project was initiated in collaboration with and with financial support from the Biometry branch of the National Cancer Institute of the Department of Health in Bethesda, U.S.A.. During 1975-80 the project received grants from the Department of Science and Technology of the Government of India at New Delhi and from the Indian Cancer Society. Since September 1981, the Indian Council of Medical Research, at New Delhi, has initially supported the project.

In order to identify the etiological factors that might be implicated in a segment of a selected population, it is necessary to determine the behavior patterns, habits, customs and environment background, of the group under study. It is also essential, to identify the differences if any, in the site patterns and incidence rates of the disease, amongst various communities living in geographical areas having different patterns of climate and physical environment and dietary habits and social customs, which are known to vary.

With this aim in mind, satellite cancer registries were established in population zones of different sizes, in Maharashtra State, so that the cancer problem throughout the state could be investigated in depth, in the light of the experience gained from the Bombay Metropolitan Registry. Thus the first satellite registry was established in Poona City in 1972, the Second at Aurangabad in 1978 and the third at Nagpur in 1980

Demographic Characteristics of Aurangabad City.

Aurangabad city is the head quarters of Marathwada, a geographic division of Maharashtra. Marathwada it covers an area of 50.48 sq.kms. having a population of 8,73,331 (2001 Census). Population density in 2001 is 17300 per sq.km. and the area supports a multi religious groups. According to 2001 census 53.19% are Hindus, 29.76% are Muslims 1.03% are Christians. 13.75% are Neo-Buddhists and 1.75% are Jains and 0.32% are Sikhs.

A city receives about 800 mms of rainfall annually. A look at the maximum 42.4°C and minimum 8.4°C temperatures reveals that considerable variations occur in the weather during the year. Aurangabad agglomeration comprises Aurangabad city and cantonment area. Aurangabad city receives the water supply from Jaikwadi dam.

Aurangabad is an important industrial town as well as popular conference center. The fastest growing industrial region in Asia, leaders in industry like Videocon, Siemens and Bajaj have units within it's periphery. The city is convenient base for organizing visits to the world famous RockFort temples of Ajantha and Elora. Besides, the presence of Buddhist caves in the vicinity shows that the region enjoyed celebrity status as early as the seventh century.

Named after Aurangazeb, last of the six great Moghul, emperors and his son, Azam Shah, who built a Mausoleum here for his father's wife, Rabia Durani. Aurangabad lies almost in the center of Maharashtra.

Sources of Information

The main source of our data collection is Aurangabad Government Medical College and Dhoot Radiotherapy Center. At present Aurangabad city has 2 medical colleges. The city has 12 hospitals and 51 Nursing homes providing 507 seven beds. Besides this private nursing home there are facilities available for diagnosis and treatment of all cancer cases as city has specialists practicing neurology, neurosurgery, medical oncologists, histopathologists and cardio-vascular surgeons in the public as well as private sector institutes.

Population Estimates

Population data was estimated from the 1991 and 2001 census reports. The estimates as on 1st January 2000 were obtained by assuming a geometric rate of growth for each age group and sex. Population distribution by age and sex for Aurangabad City Agglomeration as on 1st July 2007 is shown in the age pyramid and given in Table 1. The estimated population of the Aurangabad City Agglomeration as on 1st July 2007 (The mid point of the period, 2005 – 2009) is 11.41 Lakhs (5.97 Lakhs Males and 5.44 Lakhs Females).

The Population by religion and sex as on 1st July 2007 is presented in Table 2. These figures have been estimated by using 1991-2001 Census figures assuming geometric growth for each religion and sex.

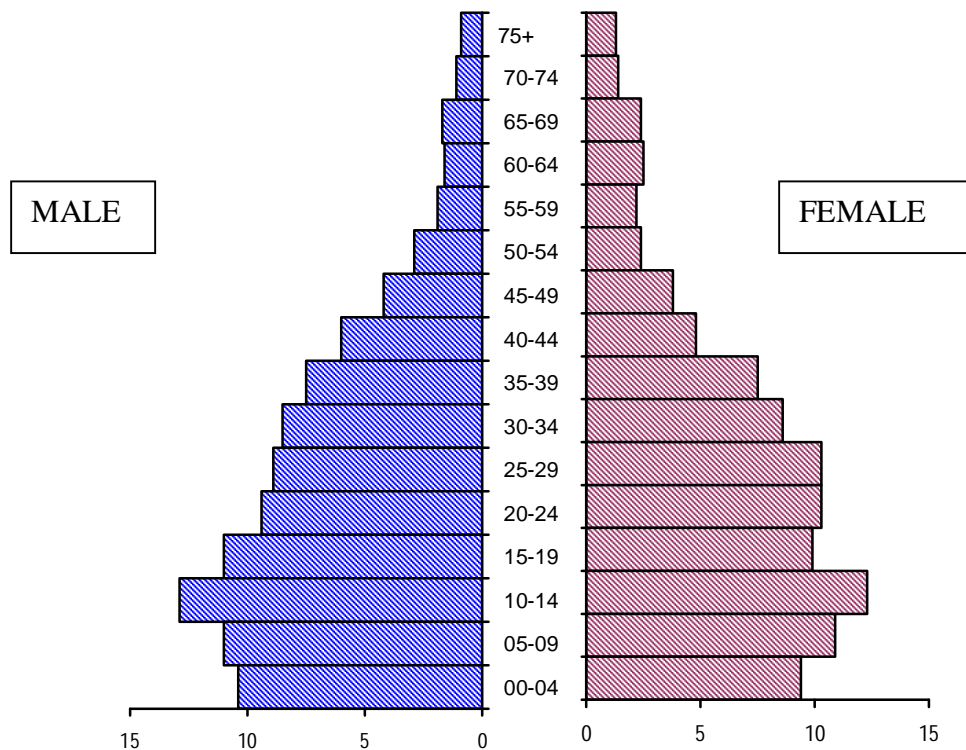


Figure: Percentage Distribution of Estimated Resident Population of Aurangabad City As on 1st July 2007.

Cancer Registration System

Population based cancer registration is a procedure evolved to obtain detailed information on all persons affected by the disease who are resident within a precisely define geographical area, which can be pooled and analyzed at a centralized repository. Such a registry differs in many ways from survey, wherein similar information is obtained only as a spot check, during a select period of time, which can thus reveal only the prevalence of a disease at a given time. The collection of factual information on the other hand is a continuous process in a registry setup, where efforts are made to obtain the necessary information, as soon as possible after diagnosis has been made.

During the period 2005-2009, information was obtained from all cancer patients registered in hospitals, under the care of consultants, physicians, surgeons, gynecologists and radiologist in Aurangabad city and from Aurangabad residents under treatment at the Tata Memorial and other leading hospitals in near by Mumbai City. General medical practitioners are not contacted individually, because according to local practice only medical specialists treat cancer patients in hospitals and nursing homes and even those patients not admitted for hospitals care are at one stage or the other referred to such specialists by the general parishioners.

Working of the Registry

Staff members personally visit the wards of the co-operating hospitals regularly; to interview all confirmed cancer patients and also those who are under cancer registration. The record files maintained by the various departments of these hospitals viz. Pathology, Hematology, Radiology and the various registers in the specialized surgical and medical wards are also examined.

The requisite details obtained for each patients, are cross-checked with the information collected from the various departments of the collaborating hospitals, to ensure completeness of records. Full information on every cancer patient registered at each and every hospital is thus obtained, irrespective of whether or not the patient is subsequently treated at the particular hospital. Additional information is obtained every time a cancer patient is re-admitted or re-examined at the institution.

As a result of such data collection from different hospitals, one and the same patients is sometimes found to be registered at two or more hospitals. Care is taken, to see that multiple entries for the same patient are not made in our records. On the other hand in some instances complete medical information is obtained by combining the data obtained from two or more hospitals, of one and the same patient.

Only patients residing in Aurangabad City Agglomerations are included in the registry so that the information collected could be related to a known population at risk. Non-residents, whose residence can not be specifically confirmed are also not included in the study.

Cancer Incidence Reporting System

Cancer incidence is defined as the occurrence of new cancer cases in a define population during a specified time period. In this report, the incidence is based on those cancers registered and which were first diagnosed between 1st January 2005 and 31st December 2009 from residents of Aurangabad City Agglomeration.

All malignant tumours including those where the pathologist may have merely suspected a malignant change are registered. Cases under code 'O' (benign) or '1' (uncertain whether benign or malignant borderline malignancy) or '2' (Carcinoma in situ) are not included in our files. Patients in whom cancer has been ruled out or has not yet been diagnosed are also omitted from our register.

We utilize the coding system devised by the World Health Organization using code numbers C00-C96 as published in the Manual of the International Classification of Diseases, Injuries and Causes of Death -10 the Revision (WHO-1992)

For histology coding the World Health Organization's in 2000 edition of International Classification of Diseases for Oncology (ICD-O3) giving histogenic and malignancy codes is followed, in conjunction with the primary site codes suggested by the World Health Organization.

Results

During the period under review (2005-2009), 2332 new cancer cases were registered among the residents of Aurangabad City Agglomeration, which given an average of 466 new cases per annum. Of these 2332 new cases, 1145 were males and 1187 were females indicating a M/F sex ratio of 0.96:1.0 where as the M/F sex ratio in general population viz 1.09:1.0. The number of cases by major sites, sex and year are given Table 3 & 4 for males and females respectively.

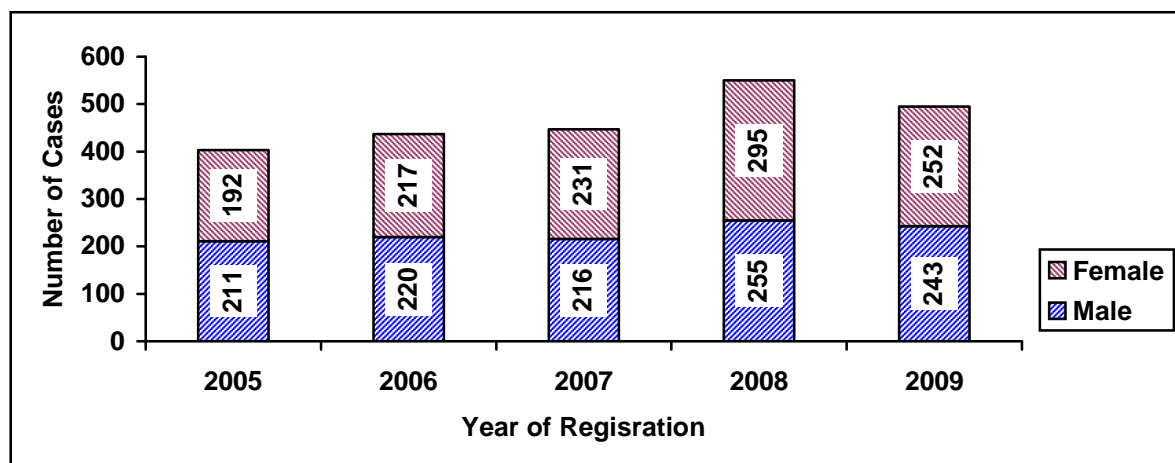


Figure1: Number of Incidence Cases of Cancer By Sex and Year of Registration

Site

The number of new cases by site group and sex for period 2005-2009 are given in Table A. In males, Buccal cavity & Pharynx is found to be the most commonest cancer site group followed by Digestive Organs and Respiratory Organs. In females, genital organs and breast contributes more than 50% of total female cancer cases.

Table A: Number of New Cancer Cases by Site group and Sex with Percentage Distribution, Aurangabad, 2005-2009.

Site Group	Male		Female		Total	
	N	%	N	%	N	%
Buccal cavity & Pharynx	262	22.9	96	8.1	358	15.4
Digestive Organs	228	19.9	152	12.8	380	16.3
Respiratory Organs	226	19.7	68	5.7	294	12.6
Bone,C.Tissue, Skin & Breast	59	5.2	352	29.7	411	17.6
Genital Organs	63	5.5	335	28.2	398	17.1
Urinary Organs	40	3.5	20	1.7	60	2.6
Eye,Brain,Thyroid & Secondaries	105	9.2	69	5.8	174	7.5
Lymphomas & Leukemias	162	14.1	95	8.0	257	11.0
Total	1145	100.0	1187	100.0	2332	100.0

Age

The number of new cancer cases by site and age are presented in Tables 5 & 6 for the period 2005-2009, for males and females respectively. Percentage Distribution of the Residence Population as on 1st July 2007 and Average Percentage distribution of New Cancer Cases for the period 2005-2009 By Age and Sex is presented in Table B.

Table B: Percentage Distribution of the Residence Population as on 1st July 2007 and Average Percentage distribution of New Cancer Cases for the period 2005-2009 By Age and Sex.

Age Group	Population			New Cancer Cases		
	Male	Female	Total	Male	Female	Total
00-14	34.4	32.7	33.6	3.3	2.9	3.1
15-34	37.8	39.1	38.4	11.8	9.0	10.5
35-64	24.1	23.1	23.7	56.7	66.1	61.5
65+	3.7	5.1	4.3	28.0	21.8	24.9
Total	100.0	100.0	100.0	100.0	100.0	100.0

The Table B clearly indicates that cancer occurs mostly at older ages as only 3.1% of the total number of cancer cases registered, were under 15 yrs of age, although this age group account 33.6% of the total population. The association of cancer with the aging process is clearly shown by the fact that 24.9% of the cases are diagnosed at age 65 and above, an age group which comprises only 4.3% of the population .(Table B & Figure 2)

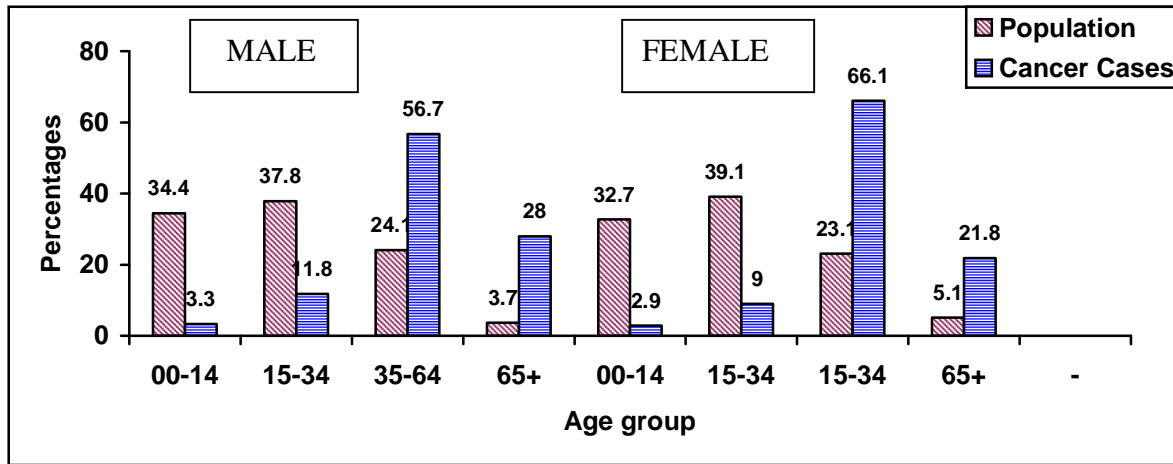


Figure2: Percentage Distribution of Resident Population and Cancer Cases, 2005-2009.

Crude, Age Specific, Age Adjusted and Truncated incidence rates by sites are given in Table 7 & 8 for males and females respectively. By relating the new cancer cases to the estimated population of Aurangabad City Agglomeration as on 1st January 2005 to 31st December 2009, we find that a crude cancer incidence rate of 40.8 per 100,000 population, for the period 2005-2009. The crude cancer incidence rate for females (43.6) was thus found to be higher than that of for males (38.3).

Age Specific incidence rate per 100,000 Population for all cancer sites for the period 2005-2009 are presented in Table C, and Figure 3.

Table C: Age Specific Incidence Rates Per 100,000 for All Cancer Sites, by Sex, 2005-2009

Age-Group	Male	Female
00-04	2.6	5.4
05-09	4.5	4.0
10-14	3.9	2.7
15-19	8.2	5.2
20-24	10.4	8.6
25-29	12.8	7.8
30-34	18.1	20.6
35-39	37.0	44.5
40-44	46.0	97.2
45-49	72.6	140.8
50-54	136.8	236.4
55-59	234.1	180.2
60-64	296.4	238.2
65-69	301.0	216.7
70-74	278.2	178.0
75+	282.7	137.3
Total	38.3	43.6

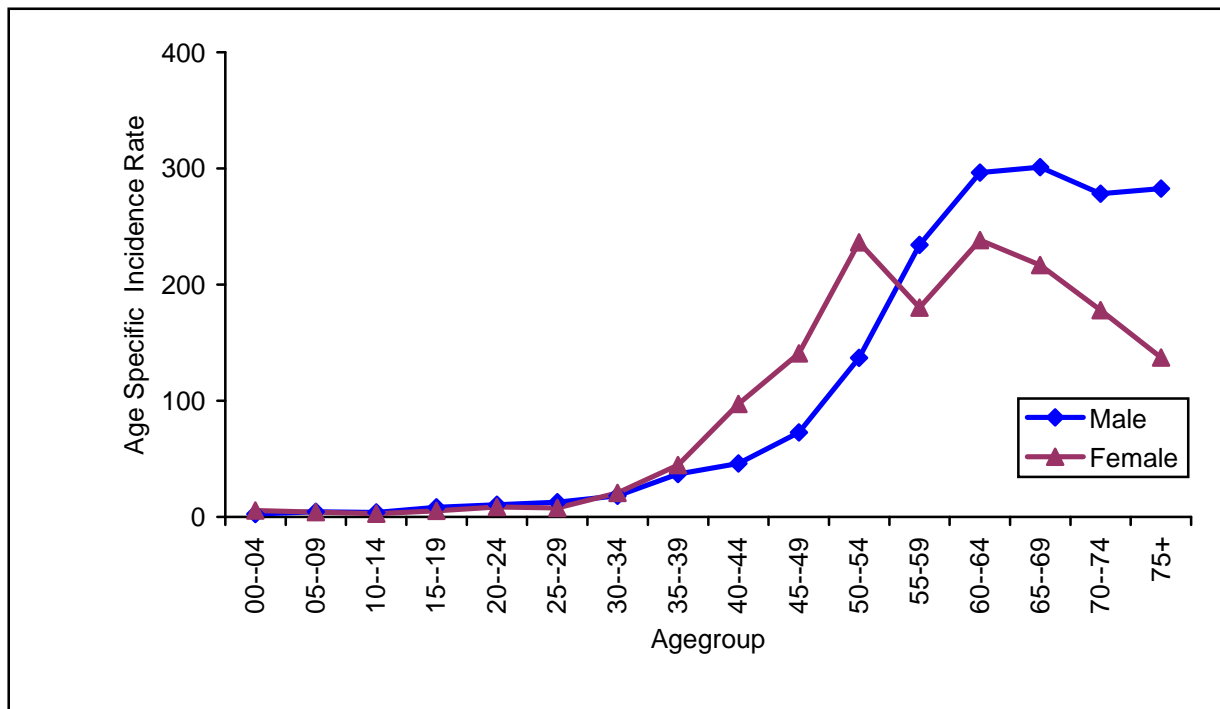


Figure 3 : Age Specific Incidence Rates per 100,000 Population for all Cancer Sites, 2005-2009

Since the incidence of cancer is known to increase with age, comparison of the rates between different populations should take into consideration by age composition of each group. The commonly accepted method of minimizing the difference in age distribution of the incidence rates is to base the rates to be compared on a common age distribution. Cancer incidence rates adjusted to the age distribution of the population of the World taken as a whole indicates that the incidence of cancers in men at 62.4 is somewhat similar in woman at 62.6.

The most common sites of cancers in males and females are shown in Table D and Figure 4. The most common sites of cancer in male were Lung. Cancer of the Larynx and Oesophagus occupied second and third ranks.

Cancer of the genital organs were found to be predominate in females, the Breast being leading site with the Uterine-Cervix coming second in rank. The Ovary was the third leading site in women.

Table D: Annual Age-Adjusted Incidence Rates by Sex per 100,000 Population at Ten Leading Sites and at all Sites, 2005-2009, Aurangabad.

Male			Female		
No	Site	AAR	No	Site	AAR
1	Lung	6.9	1	Breast	16.7
2	Larynx	5.7	2	Cervix	13.3
3	Oesophagus	4.7	3	Ovary	3.5
4	Leukemia	4.1	4	Oesophagus	3.4
5	Tongue	3.8	5	Leukemia	2.4
6	Mouth	3.4	6	Lung	2.2
7	Lymphoma	2.8	7	Mouth	1.9
8	Prostate	2.5	8	Lymphoma	1.7
9	Hypopharynx	2.4	9	Tongue	1.6
10	Rectum	2.2	10	Corpus Uteri	1.2
	AAR At all Sites	62.4		AAR at all Sites	62.6

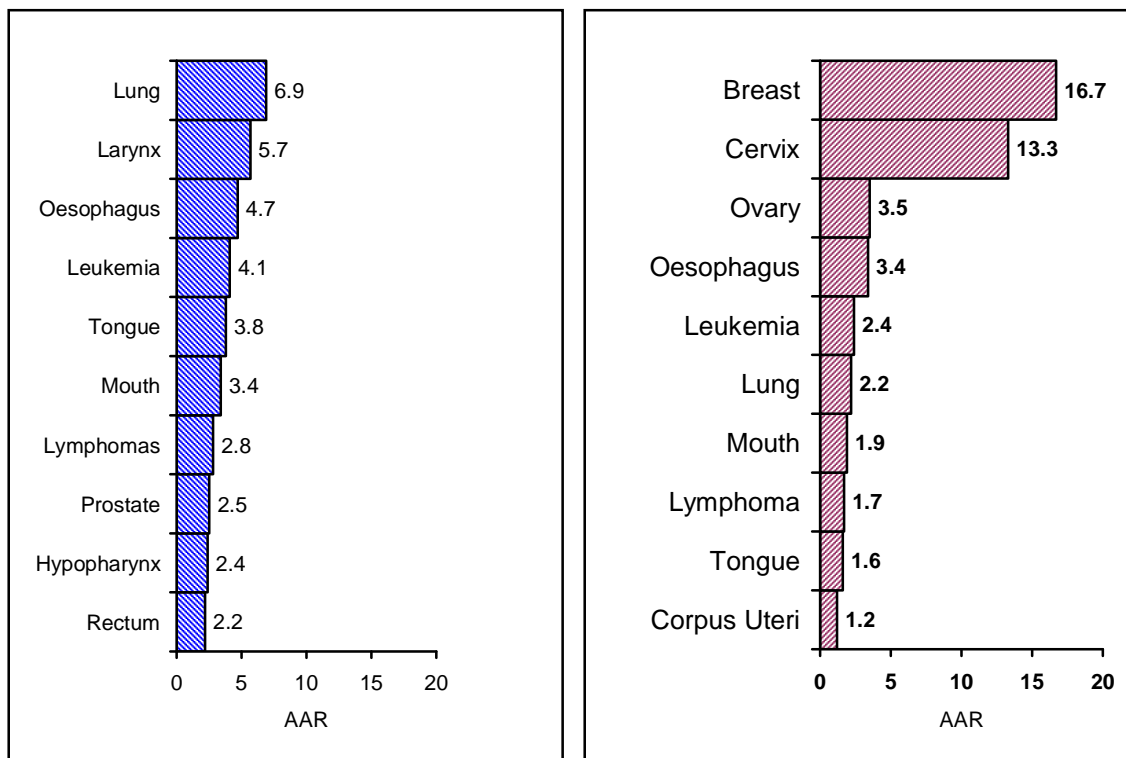


Figure 4: Age Adjusted Incidence Rates per 100,000 Population At Ten Leading Sites, 2005-2009 , Aurangabad

Table E: The Leading Cancer Sites by Truncated Incidence Rates by Sex, Site, 2005-2009, Aurangabad.

Male			Female		
No	Site	TCR	No	Site	TCR
1	Lung	12.0	1	Breast	44.0
2	Larynx	10.6	2	Cervix	33.6
3	Leukemia	8.8	3	Ovary	8.9
4	Oesophagus	8.7	4	Oesophagus	6.7
5	Tongue	8.0	5	Mouth	4.4
6	Mouth	7.6	6	Lung	4.0
7	Lymphoma	4.7	7	Corpus Uteri	3.3
8	Hypopharynx	4.6	8	Tongue	3.3
9	Rectum	4.5	9	Leukemia	3.3
10	Brain	4.2	10	Lymphoma	2.9
	TCR at all Sites	120.6		TCR at all Sites	146.8

Age reporting was found to be more reliable in the age group 35 to 64. The truncated incidence rates between the ages 35 to 64 adjusted to the age distribution of the World Population, are presented in Table E, where Ten leading cancer sites ranked as per truncated rates for males and females during 2005-2009, are given in Figure 5

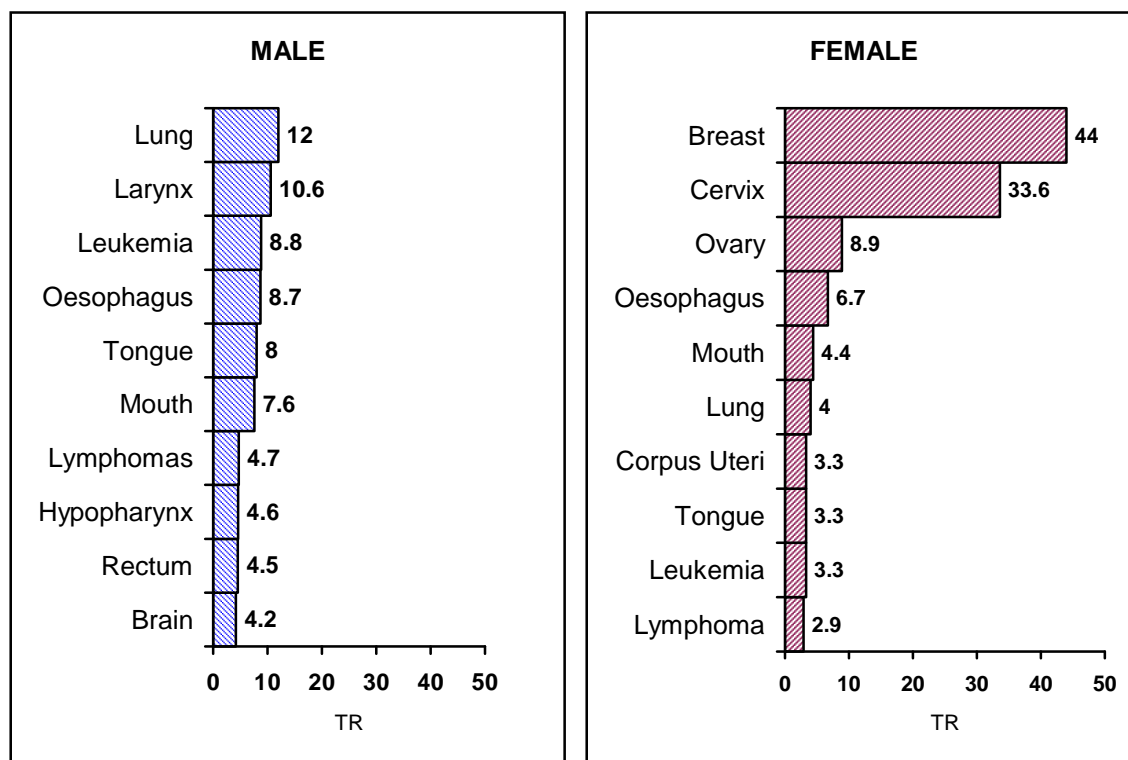


Figure 5: Truncated Incidence Rates per 100,000 Population At Ten Leading Sites, 2005-2009 , Aurangabad

The highest incidence by primary site in males and females age wise are presented in Table F. In children (Age < 15), both in boys and girls, leukemias were found to be most predominant. In the young adult male population, leukemias, brain and Tongue were more predominant. The Lung was the leading site in the men in the age group 55-69 and above the age of 75 years Lung cancer was found to be with highest incidence. Surprisingly, in males mouth cancer was found to be the most predominated cancer in the age group 40-44. In females in the age group 30-59 years cancer of the Breast was found to be with the highest incidence.

Table F: The Highest Incidence Rate by Age and Sex per 100,000 population, 2005-2009, Aurangabad.

Age group	Male		Female	
	Site	Rate	Site	Rate
00-04	Leukemia	0.9	Leukemia	2.7
05-09	Leukemia	2.1	Leukemia	2.3
10-14	Leukemia	1.6	Leukemia	0.9
15-19	Leukemia	2.4	Leukemia	1.5
20-24	Leukemia	2.5	Leukemia	3.2
25-29	Brain	1.5	Leukemia	1.2
30-34	Tongue	3.5	Breast	9.4
35-39	Tongue	6.2	Breast	11.7
40-44	Mouth	6.2	Breast	39.8
45-49	Lung	9.5	Breast	44.4
50-54	Oesophagus	14.9	Breast	74.7
55-59	Lung	19.8	Breast	57.3
60-64	Lung	41.2	Cervix	52.4
65-69	Lung	53.5	Cervix	50.4
70-74	Larynx	42.3	Breast	36.6
75+	Lung	40.4	Cervix	28.6
All Ages	Lung	3.9	Breast	11.4

Method of Diagnosis

An evaluation of the reliability of cancer data is usually measured by the percentage of patients having microscopic proof of diagnosis as compared with other methods, which are considered less accurate. Incidence cases of cancer by site, sex and method of diagnosis are presented in Tables 9 & 10 for males and females separately. The percentage of new cancer cases diagnosed by method of diagnosis and sex is presented in Table G. During the period of 2005-2009, 89% of the new cases recorded had microscopic confirmation of cancer. The percentage of patients diagnosed on the basis of clinical investigation was of 3.6% (Figure 6)

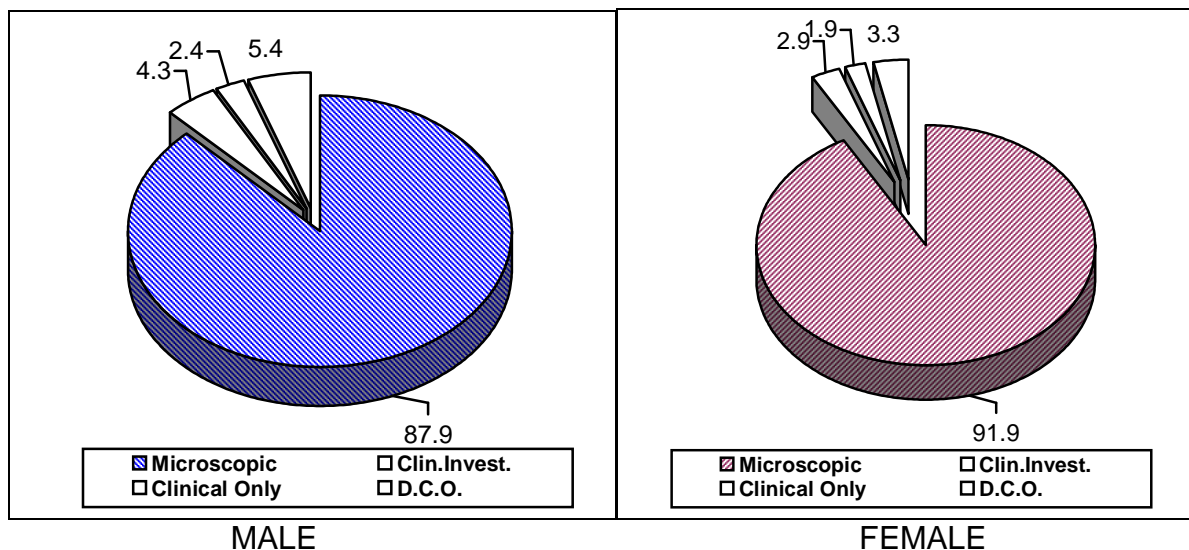


Figure 6: Percentage Distribution of the Incidence cases of Cancer by Method of Diagnosis, 2005-2009

Table G: The Percentage of New Cancer cases by Method of Diagnosis, 2005-2009, Aurangabad.

Method Of Diagnosis	Male		Female		Total	
	N	%	N	%	N	%
Microscopic	1006	87.9	1091	91.9	2097	89.9
Clinical Investigation	49	4.3	34	2.9	83	3.6
Clinical Only	28	2.4	23	1.9	51	2.2
DCO	62	5.4	39	3.3	101	4.3
Total	1145	100	1187	100	2332	100

Religion

Considerable variation was noted in the incidence of cancer at various sites in both the sexes, in patients having their domicile in other countries and in those professing different faiths within a particular population, due to a variety of causes mainly endocrine, dietary or environmental. Such variations call for adequate investigations, to elucidate the complex etiology of the disease.

To study the differences in cancer incidence by religion the crude rates by religion and sex are presented in Table H and figure 6. From this it is evident that different religious groups in Aurangabad City exhibit considerable variation in the total incidence of cancer in each sex.

Table H: Number of cases and Crude Incidence Rates by Religion and Sex, Aurangabad, 2005-2009

Religion	Male		Female		Total	
	Cases	CR	Cases	CR	Cases	CR
Hindu	825	51.4	900	62.8	1725	56.8
Muslims	310	35.2	279	33.9	589	34.7
Others	10	2.0	8	1.7	18	1.8
Total	1145	38.3	1187	43.6	2332	40.8

The different religious groups are distinguished from each other by their habits, customs, and socio-economic status. Thus, even though living in the same environment, they present striking differences from each other in the relative frequency with which cancer occurs at various sites. An appraisal of this situation was thus considered promising, in order to study the differences in site patterns of incidence. In order to define the magnitude and nature of the differences observed, the number of cancer cases and the percentage distribution of new cases in each religious group by site, is presented in Table 11 & 12 for males and females respectively.

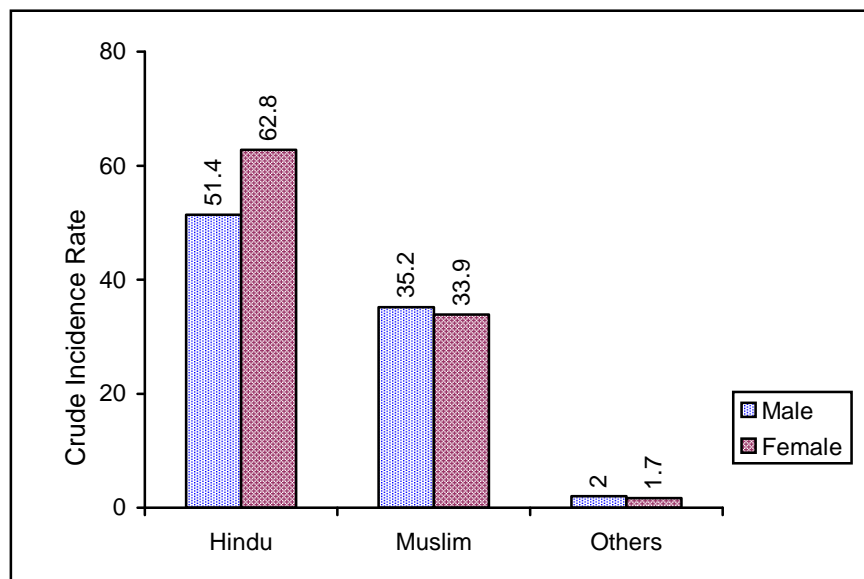


Figure 7 : Crude Incidence Rates By Religion, 2005-2009

The site incidence patterns exhibit considerable differences in the various religious groups. The most common cancer sites in Hindus and Muslims by sex are presented in Table I

Table I: Five Most Common Sites of Cancer in different Religious Groups by Sex, Aurangabad, 2005-2009

Religion	Male			Female		
	No	Site	CR	No	Site	CR
Hindu	1	Lung	4.5	1	Breast	16.0
	2	Larynx	4.2	2	Cervix	13.6
	3	Oesophagus	4.2	3	Oesophagus	3.6
	4	Leukemia	3.9	4	Ovary	3.3
	5	Tongue	3.6	5	Leukemia	2.5
Muslims	1	Lung	4.8	1	Breast	9.5
	2	Leukemia	3.0	2	Cervix	5.6
	3	Lymphoma	2.9	3	Leukemia	2.2
	4	Larynx	2.7	4	Ovary	2.1
	5	Tongue	2.3	5	Oesophagus	1.6

Among males, the Lung is leading site of cancer in Hindus and Muslims. Among females, Breast is the leading site of cancer in Hindus and Muslims followed by Cervix.

Mother Tongue

Vast differences have been known to exist in the habits and customs of different section of the large and complex Hindu community in India. One of the ways of identifying the different groups is on the basis of the written and spoken language. Indian states have been organized primarily on linguistic basis and the mother tongue provides an important source of information, to study the variations found in the relative frequency of cancer.

Incidence cases of cancer by language and site with percentages are presented in 13 & 14. for males and females respectively.

The site incidence patterns exhibit considerable differences in the various linguistic sections. The five most common sites in each linguistic group by sex are presented in Table J.

Table J: Five Most Common Sites of Cancer in different Linguistic Groups by Sex, Aurangabad, 2005-2009

Language	Male			Female		
	NO	Site	%	NO	Site	%
Marathi	1	Lung	9.4	1	Breast	25.8
	2	Larynx	8.3	2	Cervix	22.3
	3	Oesophagus	7.9	3	Ovary	5.4
	4	Leukemia	7.5	4	Oesophagus	5.2
	5	Tongue	7.0	5	Leukemia	4.0
Urdu	1	Lung	14.1	1	Breast	26.0
	2	Lymphoma	8.7	2	Cervix	16.1
	3	Larynx	8.0	3	Leukemia	7.4
	4	Leukemia	7.6	4	Ovary	6.2
	5	Tongue	6.2	5	Oesophagus	5.0
Hindi	1	Leukemia	11.9	1	Breast	29.3
	2	Lymphoma	7.6	2	Cervix	17.1
	3	Tongue	7.6	3	Oesophagus	7.3
	4	Larynx	6.5	4	Ovary	4.9
	5	Mouth	6.5	5	Leukemia	4.9

From the Table J, it has been observed that in males, the Lung in Marathi speaking and Urdu speaking, and the Leukemia in Hindi speaking ranks first site. Whereas in females Breast ranks first in Marathi, Urdu and Hindi speaking.

Marital Status

An increasing incidence and mortality of cancer relevant to the marital status have been reported in several articles during the past 30 years. In particular, attention has been focused on the relation of marital status to the morbidity and mortality of cancers of the female breast and reproductive organs. Marital Status is one of the major variables included in many epidemiological studies relating to such cancers.

The number and the percentage distribution of cancer cases by marital status and site is presented in Table 15 & 16 for Males and Females respectively.

Education

In the preceding pages, consideration has been given to examine the variation in cancer incidence that can be attributed to religion, the mother tongue and the marital status. These demographic variables are not very sensitive for determining the variations attributable to socioeconomic status. In the Indian situation, evaluation of the socioeconomic status is a very complex matter and there is no simple way of classifying the different groups that exist in the region under study. Innumerable castes and tribes make it a futile exercise to provide any meaningful grouping. Family income is a useful criteria, but in a hospital setting where the fees chargeable are often assessed on this information, it is not possible to obtain reliable data.

Under these circumstances, the level of formal education provides a more appropriate measure of the socio-economic status.

We have tried to obtain information on the educational level of each cancer patient. Unfortunately, for a large number of patients we could not obtain this information from the hospital records. Only when we were able to interview the patients individually, was it possible to obtain this data.

Incidence cases of cancer by education and site with percentages are given in Table 17 & 18 for males and females respectively.

In general we can conclude from the Table K that Lung, Pharyngeal, Tongue and Laryngeal Cancers which are known to be associated with tobacco-chewing and Cigarettes and bidi smoking habits are more prevalent in the lower socio-economic group.

Table K: Percentage Distribution of Cancer Cases for Selected Sites by Educational Level. Aurangabad, Males, 2005-2009

Site	Illiterate	Prim + Mid	Sec + Tech	Coll. & Above
Tongue	6.8	7.1	10.3	0.0
Mouth	6.8	6.0	7.7	0.0
Oropharynx	4.5	2.0	0.0	0.0
Hypopharynx	4.9	3.5	1.3	2.9
Larynx	11.7	7.5	2.6	0.0
Lung	9.4	9.1	10.3	2.9
Oesophagus	7.5	6.9	7.7	0.0
Stomach	2.6	2.2	2.6	8.8

In females, besides the breast and uterine cervix, cancer of the buccal cavity and pharynx are the most commonly affected sites. These three sites group are examined in detail in relation to education levels in Table L and Figure 7.

Table L: Percentage Distribution of Cancer Cases for Selected Sites by Educational Level, Aurangabad, Female, 2005-2009

Site	Illiterate	Prim + Mid	Sec + Tech	Coll. & Above
Mouth	4.3	1.1	0.0	0.0
Breast	19.6	35.5	25.8	50.0
Cervix	25.9	16.5	12.9	0.0

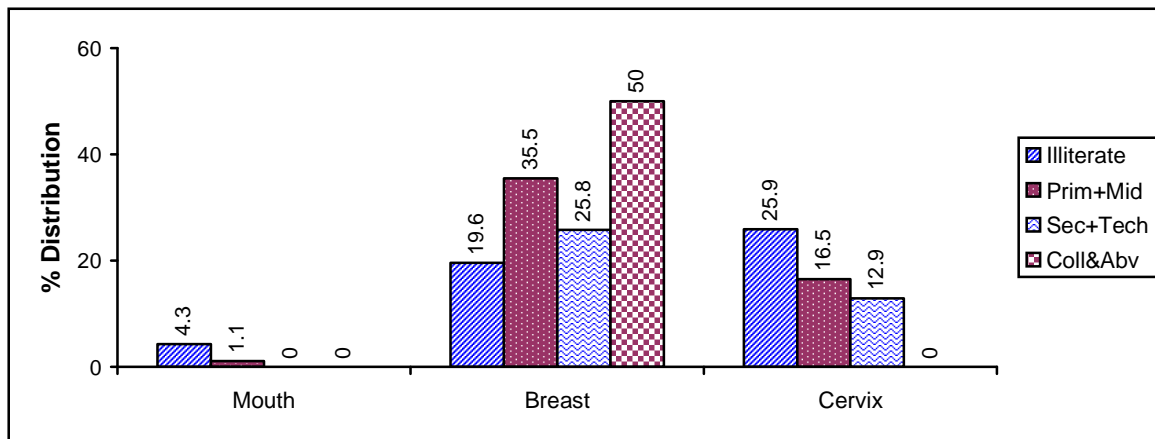


Figure 8: Percentage Distribution of Cancer Cases for Mouth, Breast, Cervix by Educational Level, Female, Aurangabad, 2005-2009

Histology

During the period 2005-2009, 2097 cancer cases were confirmed microscopically. The proportion of histopathologically proved cases was found to be 89.9%. The proportion of histopathologically confirmed cases was a little higher for females (91.9%) as compared to that for male (87.9%). The various histological varieties observed for all sites together during 2005-2009 by sex with percentage distribution is presented in Table 19.

Tobacco Related Cancers

Sites of cancers that have been associated with the use of tobacco include lip, tongue, oral cavity, pharynx, oesophagus, larynx, lung and urinary bladder. The proportions of these sites of cancer to all sites in males and females are given in Table M. In males this proportions is 46.4% while in females it is 16.3%. Lung, Oesophagus and oral cavity are major contributors of tobacco related cancers.

Table M: Number (N) & Proportion (%) of specific sites of cancer related to use of Tobacco relative to all sites of cancers , Aurangabad, 2005-2009

Site	Male		Female	
	N	%	N	%
Lip	8	0.7	-	-
Tongue	79	6.9	31	2.6
Oral Cavity	88	7.7	39	3.3
Oropharynx	26	2.3	8	0.7
Hypopharynx	37	3.2	9	0.8
Pharynx	10	0.9	2	0.2
Oesophagus	77	6.7	64	5.4
Larynx	91	7.9	11	0.9
Lung	115	10.0	43	3.6
Urinary Bladder	22	1.9	11	0.9
T.R.C.	553	48.3	218	18.4
All Types	1145	100.0	1187	100.0

Childhood Cancers

Cancers in childhood constitutes one of the most important groups of tumours, not only because of the age occurrence implying different set of etiological factors from those commonly seen in adult cancers, but also because in the past 2-3 decades, with advances particularly in chemotherapy, many of the childhood cancers have gained markabley high potency for care.

The proportions of childhood cancers relative to all sites of cancers is % in males % in females. The number and relative proportion of broad types of childhood cancers are given in Table N. Leukemias and lymphomas, constitutes the vast majority of Childhood cancers.

Table N: Number (N) & Proportion (%) of specific types of cancer in Childhood , Aurangabad, 2005-2009

Site	Male		Female	
	N	%	N	%
Leukemia	16	42.1	17	56.7
Lymphoma	8	21.1	4	13.3
C.N.S.Tumours	5	13.2	2	6.7
Retinoblastomas	-	-	1	3.3
Renal Tumours	3	7.9	3	10.0
Hepatic Tumours	-	-	-	-
Bone Tumours	2	5.3	3	10.0
Soft Tissue Sarcomas	-	-	-	-
Other Carcinomas	4	10.5	5	16.7
All Types	38	100.0	30	100.0

Tables

Table 1: Estimated Resident Population by Age and Sex as on 1st July 2007, Aurangabad, Total Population (All Religious Communities).

Age group	Male		Female		Total	
	#	%	#	%	#	%
00--04	62087	10.4	51419	9.4	113506	9.9
05--09	65951	11.0	59337	10.9	125288	11.0
10--14	77330	12.9	67082	12.3	144412	12.6
15--19	65605	11.0	53933	9.9	119538	10.5
20--24	55925	9.4	55931	10.3	111856	9.8
25--29	53193	8.9	56330	10.3	109523	9.6
30--34	50797	8.5	46680	8.6	97477	8.5
35--39	44919	7.5	40873	7.5	85792	7.5
40--44	35659	6.0	26130	4.8	61789	5.4
45--49	25333	4.2	20736	3.8	46069	4.0
50--54	17392	2.9	13111	2.4	30503	2.7
55--59	11108	1.9	11877	2.2	22985	2.0
60--64	9718	1.6	13351	2.5	23069	2.0
65--69	10099	1.7	13200	2.4	23299	2.0
70--74	6613	1.1	7641	1.4	14254	1.2
75+	5448	0.9	6994	1.3	12442	1.1
Total	597177	100.0	544625	100.0	1141802	100.0

Table 2: Estimated Resident Population by Religion and Sex, Aurangabad (As on 1st July 2007)

Religion	Male		Female		Total	
	N	%	N	%	N	%
Hindu	321295	28.3	286705	24.9	607439	53.2
Muslim	175974	15.5	164654	14.3	339115	29.7
Christian	5677	0.5	5757	0.5	12560	1.1
Others	93096	8.2	87508	7.6	182688	16.0
Total	597177	52.6	544625	47.3	1141802	100.0

Table 3: Number of Incidence Cases of Cancer by Site group and Year of Registration, with percentages, Aurangabad, Male 2005-2009.

ICD10	DESCRIPTION	2005	2006	2007	2008	2009	Total
C00-C14	Lip, Oral Cavity & Pharynx	49	46	52	51	64	262
C15-C26	Digestive Organs	42	40	50	44	52	228
C30-C39	Respiratory System	40	50	41	49	46	226
C40,C41,C49	Bone & Connective Tissue	9	4	5	11	7	36
C44	Skin	5	1	4	6	2	18
C50	Breast	2	0	1	2	0	5
C60-C63	Male Genital Organs	12	12	12	18	9	63
C64-C68	Urinary Organs	3	7	7	13	10	40
C69-C72	Eye & Nervous System	8	9	7	7	9	40
C73-C75	Thyroid and Other Endogland	1	0	2	2	1	6
C76-C80	Illdefined, Lymphnodes, Sec	3	15	15	17	9	59
C81-C90	Lymphatic System	10	20	8	16	19	73
C91-C96	Leukemias	27	16	12	19	15	89
Total	All Sites	211	220	216	255	243	1145

Table 4: Number of Incidence Cases of Cancer by Site group and Year of Registration, with percentages, Aurangabad, Female 2005-2009.

ICD10	DESCRIPTION	2005	2006	2007	2008	2009	Total
C00-C14	Lip, Oral Cavity & Pharynx	18	24	25	19	10	96
C15-C26	Digestive Organs	27	26	28	39	32	152
C30-C39	Respiratory System	8	16	10	20	14	68
C40,C41,C49	Bone & Connective Tissue	4	4	2	5	5	20
C44	Skin	4	7	3	4	3	21
C50	Breast	49	57	55	74	76	311
C51-C58	Female Genital Organs	52	46	69	94	74	335
C64-C68	Urinary Organs	4	5	3	5	3	20
C69-C72	Eye & Nervous System	5	2	2	9	6	24
C73-C75	Thyroid and Other Endogland	1	2	5	5	3	16
C76-C80	Illdefined, Lymphnodes, Sec	1	11	7	5	5	29
C81-C90	Lymphatic System	6	7	6	9	11	39
C91-C96	Leukemias	13	10	16	7	10	56
Total	All Sites	192	217	231	295	252	1187

Table 5: Number of Incidence Cases of Cancer by Site (ICD-10 and Age) with Percentages, Aurangabad, 2005-2009, Male.

ICD-10	SITE	0	5	10	15	20	25	30	35	40	45	50	55	60	65	70	75	Total	%
C00	Lip	0	0	0	0	0	0	2	3	1	0	1	0	0	0	0	1	8	0.7
C01-02	Tongue	0	0	0	0	1	2	9	14	7	5	10	10	4	9	4	4	79	6.9
C03	Gum	0	0	0	0	0	2	0	2	1	2	3	3	3	3	0	1	20	1.7
C04-06	Other Mouth	0	0	0	0	2	1	3	12	11	5	6	7	7	8	3	3	68	5.9
C07-08	Salivary Gland	0	0	0	0	1	0	0	2	0	0	0	1	1	0	0	1	6	0.5
C09-10	Oropharynx	0	0	0	0	0	0	1	1	2	0	1	3	5	9	1	3	26	2.3
C11	Nasopharynx	0	1	0	1	2	0	1	0	0	0	1	2	2	0	0	0	10	0.9
C12-13	Hypopharynx	0	0	0	0	0	0	0	1	4	1	2	4	10	5	6	4	37	3.2
C14	Other Oral	0	0	0	0	0	0	0	0	1	1	2	2	1	1	0	0	8	0.7
C15	Oesophagus	0	0	0	0	0	3	1	4	2	5	13	11	9	9	12	8	77	6.7
C16	Stomach	0	0	0	1	0	0	0	3	0	4	5	2	5	3	3	2	28	2.4
C17	Small Intenstine	0	0	0	0	0	0	0	0	0	1	0	0	0	0	0	0	1	0.1
C18	Colon	0	0	0	0	1	2	2	1	5	0	7	2	4	4	4	1	33	2.9
C19-21	Rectum	0	0	0	3	1	4	1	3	5	2	8	6	2	4	4	1	44	3.8
C22	Liver	0	0	0	0	0	0	1	2	0	3	0	5	3	7	2	3	26	2.3
C23-24	Gall Bladder	0	0	0	0	0	0	0	0	0	2	2	1	3	0	0	1	9	0.8
C25	Pancreas	0	0	0	0	0	1	0	2	3	0	0	0	2	0	2	0	10	0.9
C30-31	Nose, sinus	0	0	0	1	1	1	2	0	0	1	1	0	1	0	0	0	8	0.7
C32	Larynx	0	0	0	0	0	1	0	2	2	7	11	11	17	23	14	3	91	7.9
C33-34	Lung	0	0	0	1	0	1	3	5	7	12	6	11	20	27	11	11	115	10.0
C37-38	Mediastinum, Plura	0	0	0	0	0	0	0	1	1	0	4	3	1	0	1	1	12	1.0
C40-41	Bone	0	1	1	4	3	1	3	0	1	3	1	1	2	3	0	2	26	2.3
C44	Skin Others	0	0	0	0	0	1	0	0	1	1	3	3	2	3	2	2	18	1.6
C48	Retroperitonium	0	0	0	0	0	0	0	0	1	0	0	0	0	1	0	0	2	0.2
C49	Connective & Soft tissue	0	0	0	1	0	1	0	0	2	0	1	0	2	1	0	0	8	0.7
C50	Breast	0	0	0	0	0	0	0	0	1	1	2	0	0	0	1	0	5	0.4
C60	Penis	0	0	0	0	0	0	1	1	0	1	2	1	1	1	2	0	10	0.9
C61	Prostate	0	0	0	0	0	0	0	1	1	1	2	5	5	8	3	11	37	3.2
C62	Testis	0	0	0	1	0	2	2	4	1	2	0	1	1	1	0	0	15	1.3
C63	Other Male Gen Org	0	0	0	0	0	0	0	0	0	1	0	0	0	0	0	0	1	0.1
C64-65	Kidney	1	0	2	0	1	0	0	1	1	2	0	2	4	3	1	0	18	1.6
C66-68	Urinary Bladder	0	0	0	0	0	0	1	0	2	1	3	1	1	3	6	4	22	1.9
C70-72	Brain	2	2	1	1	2	4	3	7	2	1	4	4	6	0	0	1	40	3.5
C73	Thyroid	0	0	0	0	0	0	0	1	0	1	1	0	0	0	0	1	4	0.3
C74-75	Oth Endocrine Gland	0	1	0	0	0	1	0	0	0	0	0	0	0	0	0	0	2	0.2
C76	Oth III Def Site	0	0	0	0	0	0	0	0	0	0	0	1	0	1	1	0	3	0.3
C77	Lymphnodes	0	0	0	0	0	0	1	0	1	1	0	2	1	1	1	1	9	0.8
C78	Sec Resp & Dig	0	0	0	0	0	0	0	1	1	0	0	0	2	0	1	1	6	0.5
C79	Sec Others	0	0	0	0	0	0	0	0	0	2	2	2	1	1	1	0	9	0.8
C80	Unk Primary	1	1	0	0	1	0	0	1	4	4	2	4	7	4	1	2	32	2.8
C81	Hodgkin Lymphoma	0	1	2	0	0	1	3	0	0	5	0	0	0	1	0	1	14	1.2
C82-85	N.H. Lymphoma	1	1	3	5	6	2	4	4	4	3	5	4	3	3	3	2	53	4.6
C90	Multiple Myeloma	0	0	0	0	0	0	1	0	1	1	0	0	1	2	0	0	6	0.5
C91	Lymphoid Leukemia	2	3	1	6	2	1	0	0	1	2	2	6	4	1	1	0	32	2.8
C92	Myeloid Leukemia	1	2	4	1	4	2	1	3	2	8	6	7	1	2	1	1	46	4.0
C93-95	Other Leukemia	0	2	1	1	1	0	0	1	3	0	0	2	0	0	0	0	11	1.0
Total	All Site	8	15	15	27	29	34	46	83	82	92	119	130	144	152	92	77	1145	100.0

Table 6: Number of Incidence Cases of Cancer by Site (ICD-10 and Age) with Percentages, Aurangabad, 2005-2009, Female.

ICD-10	SITE	0	5	10	15	20	25	30	35	40	45	50	55	60	65	70	75	Total	%
C01-02	Tongue	0	0	0	1	0	0	3	0	5	4	4	1	3	5	3	2	31	2.6
C03	Gum	0	0	0	0	0	0	0	0	0	3	2	1	1	0	0	0	7	0.6
C04-06	Other Mouth	0	0	0	0	0	0	0	2	2	5	8	0	5	5	1	4	32	2.7
C07-08	Salivary Gland	0	0	0	0	0	0	0	0	1	1	0	0	1	1	0	0	4	0.3
C09-10	Oropharynx	0	1	0	0	0	0	0	0	1	0	1	0	3	0	1	1	8	0.7
C11	Nasopharynx	0	0	1	0	0	1	0	0	0	0	0	0	0	0	0	0	2	0.2
C12-13	Hypopharynx	0	0	0	0	0	0	1	1	0	1	1	2	0	0	2	1	9	0.8
C14	Other Oral	0	0	0	0	0	0	0	0	0	0	1	0	0	2	0	0	3	0.3
C15	Oesophagus	0	0	0	0	1	0	1	2	10	6	2	6	11	9	9	7	64	5.4
C16	Stomach	0	0	0	0	0	1	0	2	2	5	3	2	1	1	1	1	19	1.6
C18	Colon	0	0	0	0	0	0	1	1	4	3	3	4	1	4	0	1	22	1.9
C19-21	Rectum	0	0	0	0	1	1	0	2	0	2	3	1	4	3	0	1	18	1.5
C22	Liver	0	0	0	0	0	0	0	1	2	1	5	3	2	1	3	0	18	1.5
C23-24	Gall Bladder	0	0	0	0	0	0	0	1	0	0	1	0	1	1	0	0	4	0.3
C25	Pancreas	0	0	0	0	0	0	0	1	0	0	3	2	1	0	0	0	7	0.6
C30-31	Nose, sinus	0	0	0	0	0	0	0	0	0	1	0	0	1	0	1	1	4	0.3
C32	Larynx	0	0	0	0	1	1	0	0	1	0	0	1	3	2	1	1	11	0.9
C33-34	Lung	0	0	1	1	0	0	0	3	3	4	4	1	7	11	4	4	43	3.6
C37-38	Mediastinum, Plura	0	0	0	1	0	0	0	3	0	0	0	0	0	3	2	1	10	0.8
C40-41	Bone	0	1	2	0	0	2	0	0	1	0	0	0	0	1	0	0	7	0.6
C43	Skin Melanoma	0	0	0	0	0	0	0	1	0	0	0	0	0	0	0	0	1	0.1
C44	Skin Others	0	0	0	0	0	0	0	4	3	1	1	1	4	3	2	1	20	1.7
C48	Retroperitonium	0	0	0	0	0	0	0	2	0	1	0	1	0	0	0	0	4	0.3
C49	Connective & Soft tissue	0	0	0	2	1	1	2	0	1	0	0	0	1	1	0	0	9	0.8
C50	Breast	0	0	0	0	2	3	22	24	52	46	49	34	31	30	14	4	311	26.2
C51-52	Other Fem Gen Org	0	0	0	0	0	0	0	1	0	0	1	1	1	0	0	0	4	0.3
C53	Cervix Uteri	0	0	0	0	2	1	6	21	26	34	34	29	35	33	11	10	242	20.4
C54	Corpus Uteri	0	0	0	0	0	0	0	0	1	4	3	3	5	4	0	0	20	1.7
C56	Ovary	0	0	0	2	4	1	1	8	3	6	12	5	13	6	3	1	65	5.5
C57-58	Oth Unsp Fem Gen Org	0	0	0	1	1	0	1	1	0	0	0	0	0	0	0	0	4	0.3
C64-65	Kidney	1	2	0	0	0	1	0	1	1	1	0	0	2	0	0	0	9	0.8
C66-68	Urinary Bladder	0	0	0	0	0	0	0	2	0	1	2	1	3	2	0	0	11	0.9
C69	Eye	1	0	0	0	0	0	0	0	0	0	0	0	1	0	0	0	2	0.2
C70-72	Brain	1	0	1	1	1	3	2	2	1	3	1	1	2	0	2	1	22	1.9
C73	Thyroid	0	0	0	1	1	1	2	5	0	1	1	1	2	0	0	1	16	1.3
C76	Oth III Def Site	0	0	0	0	0	0	1	0	0	0	0	0	0	0	0	0	1	0.1
C77	Lymphnodes	0	0	0	0	0	0	0	0	0	0	1	0	1	1	0	0	3	0.3
C78	Sec Resp & Dig	0	0	0	0	0	0	0	0	0	1	0	0	0	0	0	0	1	0.1
C79	Sec Others	0	0	0	0	0	0	2	0	0	2	0	0	0	0	0	0	4	0.3
C80	Unk Primary	1	0	1	0	0	0	0	0	0	4	2	0	2	6	3	1	20	1.7
C81	Hodgkin Lymphoma	1	1	0	0	0	0	0	0	0	1	1	0	1	0	0	0	5	0.4
C82-85	N.H. Lymphoma	2	0	0	0	0	2	1	0	1	1	2	3	4	3	5	3	27	2.3
C90	Multiple Myeloma	0	0	0	0	0	0	0	0	1	1	1	0	2	1	0	1	7	0.6
C91	Lymphoid Leukemia	5	4	2	3	2	1	2	0	0	0	1	1	0	0	0	0	21	1.8
C92	Myeloid Leukemia	2	0	1	1	5	1	0	0	5	2	2	2	3	3	0	0	27	2.3
C93-95	Other Leukemia	0	3	0	0	2	1	0	0	0	0	0	0	1	1	0	0	8	0.7
Total	All Site	14	12	9	14	24	22	48	91	127	146	155	107	159	143	68	48	1187	100.0

Table 7: Average Annual Age-Specific, World Age Adjusted, Truncated (35-64) Incidence Rates of Cancer Cases Per 100,000 Persons, by site, Aurangabad, 2005-2009, Male.

ICD-10	SITE	0	5	10	15	20	25	30	35	40	45	50	55	60	65	70	75	CR	AAR	TR
C00	Lip	0.0	0.0	0.0	0.0	0.0	0.0	0.8	1.3	0.6	0.0	1.1	0.0	0.0	0.0	0.0	3.7	0.3	0.3	0.6
C01-02	Tongue	0.0	0.0	0.0	0.0	0.4	0.8	3.5	6.2	3.9	3.9	11.5	18.0	8.2	17.8	12.1	14.7	2.6	3.8	8.0
C03	Gum	0.0	0.0	0.0	0.0	0.0	0.8	0.0	0.9	0.6	1.6	3.4	5.4	6.2	5.9	0.0	3.7	0.7	1.1	2.6
C04-06	Other Mouth	0.0	0.0	0.0	0.0	0.7	0.4	1.2	5.3	6.2	3.9	6.9	12.6	14.4	15.8	9.1	11.0	2.3	3.4	7.6
C07-08	Salivary Gland	0.0	0.0	0.0	0.0	0.4	0.0	0.0	0.9	0.0	0.0	0.0	1.8	2.1	0.0	0.0	3.7	0.2	0.3	0.7
C09-10	Oropharynx	0.0	0.0	0.0	0.0	0.0	0.0	0.4	0.4	1.1	0.0	1.1	5.4	10.3	17.8	3.0	11.0	0.9	1.6	2.5
C11	Nasopharynx	0.0	0.3	0.0	0.3	0.7	0.0	0.4	0.0	0.0	0.0	1.1	3.6	4.1	0.0	0.0	0.0	0.3	0.5	1.2
C12-13	Hypopharynx	0.0	0.0	0.0	0.0	0.0	0.0	0.0	0.4	2.2	0.8	2.3	7.2	20.6	9.9	18.1	14.7	1.2	2.4	4.6
C14	Other Oral	0.0	0.0	0.0	0.0	0.0	0.0	0.0	0.0	0.6	0.8	2.3	3.6	2.1	2.0	0.0	0.0	0.3	0.5	1.4
C15	Oesophagus	0.0	0.0	0.0	0.0	0.0	1.1	0.4	1.8	1.1	3.9	14.9	19.8	18.5	17.8	36.3	29.4	2.6	4.7	8.7
C16	Stomach	0.0	0.0	0.0	0.3	0.0	0.0	0.0	1.3	0.0	3.2	5.7	3.6	10.3	5.9	9.1	7.3	0.9	1.6	3.6
C17	Small Intenstine	0.0	0.0	0.0	0.0	0.0	0.0	0.0	0.0	0.0	0.8	0.0	0.0	0.0	0.0	0.0	0.0	0.0	0.0	0.2
C18	Colon	0.0	0.0	0.0	0.0	0.4	0.8	0.8	0.4	2.8	0.0	8.0	3.6	8.2	7.9	12.1	3.7	1.1	1.8	3.5
C19-21	Rectum	0.0	0.0	0.0	0.9	0.4	1.5	0.4	1.3	2.8	1.6	9.2	10.8	4.1	7.9	12.1	3.7	1.5	2.2	4.5
C22	Liver	0.0	0.0	0.0	0.0	0.0	0.0	0.4	0.9	0.0	2.4	0.0	9.0	6.2	13.9	6.0	11.0	0.9	1.6	2.6
C23-24	Gall Bladder	0.0	0.0	0.0	0.0	0.0	0.0	0.0	0.0	0.0	1.6	2.3	1.8	6.2	0.0	0.0	3.7	0.3	0.6	1.7
C25	Pancreas	0.0	0.0	0.0	0.0	0.0	0.4	0.0	0.9	1.7	0.0	0.0	0.0	4.1	0.0	6.0	0.0	0.3	0.5	1.0
C30-31	Nose, sinus	0.0	0.0	0.0	0.3	0.4	0.4	0.8	0.0	0.0	0.8	1.1	0.0	2.1	0.0	0.0	0.0	0.3	0.3	0.6
C32	Larynx	0.0	0.0	0.0	0.0	0.0	0.4	0.0	0.9	1.1	5.5	12.6	19.8	35.0	45.5	42.3	11.0	3.0	5.7	10.6
C33-34	Lung	0.0	0.0	0.0	0.3	0.0	0.4	1.2	2.2	3.9	9.5	6.9	19.8	41.2	53.5	33.3	40.4	3.9	6.9	12.0
C37-38	Mediastinum, Plura	0.0	0.0	0.0	0.0	0.0	0.0	0.0	0.4	0.6	0.0	4.6	5.4	2.1	0.0	3.0	3.7	0.4	0.7	1.9
C40-41	Bone	0.0	0.3	0.3	1.2	1.1	0.4	1.2	0.0	0.6	2.4	1.1	1.8	4.1	5.9	0.0	7.3	0.9	1.1	1.5
C44	Skin Others	0.0	0.0	0.0	0.0	0.0	0.4	0.0	0.0	0.6	0.8	3.4	5.4	4.1	5.9	6.0	7.3	0.6	1.1	2.0
C48	Retroperitonium	0.0	0.0	0.0	0.0	0.0	0.0	0.0	0.0	0.6	0.0	0.0	0.0	0.0	2.0	0.0	0.0	0.1	0.1	0.1
C49	Connective & Soft tissu	0.0	0.0	0.0	0.3	0.0	0.4	0.0	0.0	1.1	0.0	1.1	0.0	4.1	2.0	0.0	0.0	0.3	0.4	0.9
C50	Breast	0.0	0.0	0.0	0.0	0.0	0.0	0.0	0.0	0.6	0.8	2.3	0.0	0.0	0.0	3.0	0.0	0.2	0.3	0.6
C60	Penis	0.0	0.0	0.0	0.0	0.0	0.0	0.4	0.4	0.0	0.8	2.3	1.8	2.1	2.0	6.0	0.0	0.3	0.5	1.1
C61	Prostate	0.0	0.0	0.0	0.0	0.0	0.0	0.0	0.4	0.6	0.8	2.3	9.0	10.3	15.8	9.1	40.4	1.2	2.5	3.2
C62	Testis	0.0	0.0	0.0	0.3	0.0	0.8	0.8	1.8	0.6	1.6	0.0	1.8	2.1	2.0	0.0	0.0	0.5	0.6	1.3
C63	Other Male Gen Org	0.0	0.0	0.0	0.0	0.0	0.0	0.0	0.0	0.0	0.8	0.0	0.0	0.0	0.0	0.0	0.0	0.0	0.0	0.2
C64-65	Kidney	0.3	0.0	0.5	0.0	0.4	0.0	0.0	0.4	0.6	1.6	0.0	3.6	8.2	5.9	3.0	0.0	0.6	1.0	2.0
C66-68	Urinary Bladder	0.0	0.0	0.0	0.0	0.0	0.0	0.4	0.0	1.1	0.8	3.4	1.8	2.1	5.9	18.1	14.7	0.7	1.3	1.4
C70-72	Brain	0.6	0.6	0.3	0.3	0.7	1.5	1.2	3.1	1.1	0.8	4.6	7.2	12.3	0.0	0.0	3.7	1.3	1.8	4.2
C73	Thyroid	0.0	0.0	0.0	0.0	0.0	0.0	0.0	0.4	0.0	0.8	1.1	0.0	0.0	0.0	0.0	3.7	0.1	0.2	0.4
C74-75	Oth Endocrine Gland	0.0	0.3	0.0	0.0	0.0	0.4	0.0	0.0	0.0	0.0	0.0	0.0	0.0	0.0	0.0	0.0	0.1	0.1	0.0
C76	Oth III Def Site	0.0	0.0	0.0	0.0	0.0	0.0	0.0	0.0	0.0	0.0	0.0	1.8	0.0	2.0	3.0	0.0	0.1	0.2	0.2
C77	Lymphnodes	0.0	0.0	0.0	0.0	0.0	0.0	0.4	0.0	0.6	0.8	0.0	3.6	2.1	2.0	3.0	3.7	0.3	0.5	1.0
C78	Sec Resp & Dig	0.0	0.0	0.0	0.0	0.0	0.0	0.0	0.4	0.6	0.0	0.0	0.0	4.1	0.0	3.0	3.7	0.2	0.4	0.7
C79	Sec Others	0.0	0.0	0.0	0.0	0.0	0.0	0.0	0.0	0.0	1.6	2.3	3.6	2.1	2.0	3.0	0.0	0.3	0.6	1.4
C80	Unk Primary	0.3	0.3	0.0	0.0	0.4	0.0	0.0	0.4	2.2	3.2	2.3	7.2	14.4	7.9	3.0	7.3	1.1	1.9	4.3
C81	Hodgkin Lymphoma	0.0	0.3	0.5	0.0	0.0	0.4	1.2	0.0	0.0	3.9	0.0	0.0	0.0	2.0	0.0	3.7	0.5	0.5	0.8
C82-85	N.H. Lymphoma	0.3	0.3	0.8	1.5	2.1	0.8	1.6	1.8	2.2	2.4	5.7	7.2	6.2	5.9	9.1	7.3	1.8	2.3	3.9
C90	Multiple Myeloma	0.0	0.0	0.0	0.0	0.0	0.0	0.4	0.0	0.6	0.8	0.0	0.0	2.1	4.0	0.0	0.0	0.2	0.3	0.5
C91	Lymphoid Leukemia	0.6	0.9	0.3	1.8	0.7	0.4	0.0	0.0	0.6	1.6	2.3	10.8	8.2	2.0	3.0	0.0	1.1	1.6	3.2
C92	Myeloid Leukemia	0.3	0.6	1.0	0.3	1.4	0.8	0.4	1.3	1.1	6.3	6.9	12.6	2.1	4.0	3.0	3.7	1.5	2.1	4.7
C93-95	Other Leukemia	0.0	0.6	0.3	0.3	0.4	0.0	0.0	0.4	1.7	0.0	0.0	3.6	0.0	0.0	0.0	0.0	0.4	0.4	0.9
Total	All Site	2.6	4.5	3.9	8.2	10.4	12.8	18.1	37.0	46.0	72.6	136.8	234.1	296.4	301.0	278.2	282.7	38.3	62.4	120.6

Table 8: Average Annual Age-Specific, World Age Adjusted, Truncated (35-64) Incidence Rates of Cancer Cases Per 100,000 Persons, by site, Aurangabad, 2005-2009, Female

ICD-10	SITE	0	5	10	15	20	25	30	35	40	45	50	55	60	65	70	75	CR	AAR	TR
C01-02	Tongue	0.0	0.0	0.0	0.4	0.0	0.0	1.3	0.0	3.8	3.9	6.1	1.7	4.5	7.6	7.9	5.7	1.1	1.6	3.3
C03	Gum	0.0	0.0	0.0	0.0	0.0	0.0	0.0	0.0	0.0	2.9	3.1	1.7	1.5	0.0	0.0	0.0	0.3	0.5	1.5
C04-06	Other Mouth	0.0	0.0	0.0	0.0	0.0	0.0	0.0	1.0	1.5	4.8	12.2	0.0	7.5	7.6	2.6	11.4	1.2	1.9	4.4
C07-08	Salivary Gland	0.0	0.0	0.0	0.0	0.0	0.0	0.0	0.0	0.8	1.0	0.0	0.0	1.5	1.5	0.0	0.0	0.1	0.2	0.5
C09-10	Oropharynx	0.0	0.3	0.0	0.0	0.0	0.0	0.0	0.0	0.8	0.0	1.5	0.0	4.5	0.0	2.6	2.9	0.3	0.4	1.0
C11	Nasopharynx	0.0	0.0	0.3	0.0	0.0	0.4	0.0	0.0	0.0	0.0	0.0	0.0	0.0	0.0	0.0	0.0	0.1	0.1	0.0
C12-13	Hypopharynx	0.0	0.0	0.0	0.0	0.0	0.0	0.4	0.5	0.0	1.0	1.5	3.4	0.0	0.0	5.2	2.9	0.3	0.5	1.0
C14	Other Oral	0.0	0.0	0.0	0.0	0.0	0.0	0.0	0.0	0.0	0.0	1.5	0.0	0.0	3.0	0.0	0.0	0.1	0.2	0.2
C15	Oesophagus	0.0	0.0	0.0	0.0	0.4	0.0	0.4	1.0	7.7	5.8	3.1	10.1	16.5	13.6	23.6	20.0	2.4	3.4	6.7
C16	Stomach	0.0	0.0	0.0	0.0	0.0	0.4	0.0	1.0	1.5	4.8	4.6	3.4	1.5	1.5	2.6	2.9	0.7	1.0	2.8
C18	Colon	0.0	0.0	0.0	0.0	0.0	0.0	0.4	0.5	3.1	2.9	4.6	6.7	1.5	6.1	0.0	2.9	0.8	1.2	3.0
C19-21	Rectum	0.0	0.0	0.0	0.0	0.4	0.4	0.0	1.0	0.0	1.9	4.6	1.7	6.0	4.5	0.0	2.9	0.7	1.0	2.3
C22	Liver	0.0	0.0	0.0	0.0	0.0	0.0	0.0	0.5	1.5	1.0	7.6	5.1	3.0	1.5	7.9	0.0	0.7	1.1	2.8
C23-24	Gall Bladder	0.0	0.0	0.0	0.0	0.0	0.0	0.0	0.5	0.0	0.0	1.5	0.0	1.5	1.5	0.0	0.0	0.1	0.2	0.5
C25	Pancreas	0.0	0.0	0.0	0.0	0.0	0.0	0.0	0.5	0.0	0.0	4.6	3.4	1.5	0.0	0.0	0.0	0.3	0.5	1.5
C30-31	Nose, sinus	0.0	0.0	0.0	0.0	0.0	0.0	0.0	0.0	0.0	1.0	0.0	0.0	1.5	0.0	2.6	2.9	0.1	0.2	0.4
C32	Larynx	0.0	0.0	0.0	0.0	0.4	0.4	0.0	0.0	0.8	0.0	0.0	1.7	4.5	3.0	2.6	2.9	0.4	0.6	0.9
C33-34	Lung	0.0	0.0	0.3	0.4	0.0	0.0	0.0	1.5	2.3	3.9	6.1	1.7	10.5	16.7	10.5	11.4	1.6	2.2	4.0
C37-38	Mediastinum, Plura	0.0	0.0	0.0	0.4	0.0	0.0	0.0	1.5	0.0	0.0	0.0	0.0	0.0	4.5	5.2	2.9	0.4	0.4	0.3
C40-41	Bone	0.0	0.3	0.6	0.0	0.0	0.7	0.0	0.0	0.8	0.0	0.0	0.0	0.0	1.5	0.0	0.0	0.3	0.2	0.1
C43	Skin Melanoma	0.0	0.0	0.0	0.0	0.0	0.0	0.0	0.5	0.0	0.0	0.0	0.0	0.0	0.0	0.0	0.0	0.0	0.0	0.1
C44	Skin Others	0.0	0.0	0.0	0.0	0.0	0.0	0.0	2.0	2.3	1.0	1.5	1.7	6.0	4.5	5.2	2.9	0.7	1.0	2.2
C48	Retroperitonium	0.0	0.0	0.0	0.0	0.0	0.0	0.0	1.0	0.0	1.0	0.0	1.7	0.0	0.0	0.0	0.0	0.1	0.2	0.6
C49	Connective & Soft tissue	0.0	0.0	0.0	0.7	0.4	0.4	0.9	0.0	0.8	0.0	0.0	0.0	1.5	1.5	0.0	0.0	0.3	0.3	0.3
C50	Breast	0.0	0.0	0.0	0.0	0.7	1.1	9.4	11.7	39.8	44.4	74.7	57.3	46.4	45.5	36.6	11.4	11.4	16.7	44.0
C51-52	Other Fem Gen Org	0.0	0.0	0.0	0.0	0.0	0.0	0.0	0.5	0.0	0.0	1.5	1.7	1.5	0.0	0.0	0.0	0.1	0.2	0.8
C53	Cervix Uteri	0.0	0.0	0.0	0.0	0.7	0.4	2.6	10.3	19.9	32.8	51.9	48.8	52.4	50.0	28.8	28.6	8.9	13.3	33.6
C54	Corpus Uteri	0.0	0.0	0.0	0.0	0.0	0.0	0.0	0.0	0.8	3.9	4.6	5.1	7.5	6.1	0.0	0.0	0.7	1.2	3.3
C56	Ovary	0.0	0.0	0.0	0.7	1.4	0.4	0.4	3.9	2.3	5.8	18.3	8.4	19.5	9.1	7.9	2.9	2.4	3.5	8.9
C57-58	Oth Unsp Fem Gen Org	0.0	0.0	0.0	0.4	0.4	0.0	0.4	0.5	0.0	0.0	0.0	0.0	0.0	0.0	0.0	0.0	0.1	0.1	0.1
C64-65	Kidney	0.4	0.7	0.0	0.0	0.0	0.4	0.0	0.5	0.8	1.0	0.0	0.0	3.0	0.0	0.0	0.0	0.3	0.4	0.8
C66-68	Urinary Bladder	0.0	0.0	0.0	0.0	0.0	0.0	0.0	1.0	0.0	1.0	3.1	1.7	4.5	3.0	0.0	0.0	0.4	0.6	1.7
C69	Eye	0.4	0.0	0.0	0.0	0.0	0.0	0.0	0.0	0.0	0.0	0.0	0.0	1.5	0.0	0.0	0.0	0.1	0.1	0.2
C70-72	Brain	0.4	0.0	0.3	0.4	0.4	1.1	0.9	1.0	0.8	2.9	1.5	1.7	3.0	0.0	5.2	2.9	0.8	1.0	1.7
C73	Thyroid	0.0	0.0	0.0	0.4	0.4	0.4	0.9	2.4	0.0	1.0	1.5	1.7	3.0	0.0	0.0	2.9	0.6	0.7	1.5
C76	Oth III Def Site	0.0	0.0	0.0	0.0	0.0	0.0	0.4	0.0	0.0	0.0	0.0	0.0	0.0	0.0	0.0	0.0	0.0	0.0	0.0
C77	Lymphnodes	0.0	0.0	0.0	0.0	0.0	0.0	0.0	0.0	0.0	0.0	1.5	0.0	1.5	1.5	0.0	0.0	0.1	0.2	0.4
C78	Sec Resp & Dig	0.0	0.0	0.0	0.0	0.0	0.0	0.0	0.0	0.0	1.0	0.0	0.0	0.0	0.0	0.0	0.0	0.0	0.1	0.2
C79	Sec Others	0.0	0.0	0.0	0.0	0.0	0.0	0.9	0.0	0.0	1.9	0.0	0.0	0.0	0.0	0.0	0.0	0.1	0.2	0.4
C80	Unk Primary	0.4	0.0	0.3	0.0	0.0	0.0	0.0	0.0	0.0	3.9	3.1	0.0	3.0	9.1	7.9	2.9	0.7	1.1	1.6
C81	Hodgkin Lymphoma	0.4	0.3	0.0	0.0	0.0	0.0	0.0	0.0	0.0	1.0	1.5	0.0	1.5	0.0	0.0	0.0	0.2	0.3	0.6
C82-85	N.H. Lymphoma	0.8	0.0	0.0	0.0	0.0	0.7	0.4	0.0	0.8	1.0	3.1	5.1	6.0	4.5	13.1	8.6	1.0	1.4	2.3
C90	Multiple Myeloma	0.0	0.0	0.0	0.0	0.0	0.0	0.0	0.0	0.8	1.0	1.5	0.0	3.0	1.5	0.0	2.9	0.3	0.4	1.0
C91	Lymphoid Leukemia	1.9	1.3	0.6	1.1	0.7	0.4	0.9	0.0	0.0	0.0	1.5	1.7	0.0	0.0	0.0	0.0	0.8	0.8	0.5
C92	Myeloid Leukemia	0.8	0.0	0.3	0.4	1.8	0.4	0.0	0.0	3.8	1.9	3.1	3.4	4.5	4.5	0.0	0.0	1.0	1.3	2.6
C93-95	Other Leukemia	0.0	1.0	0.0	0.0	0.7	0.4	0.0	0.0	0.0	0.0	0.0	0.0	1.5	1.5	0.0	0.0	0.3	0.3	0.2
Total	All Site	5.4	4.0	2.7	5.2	8.6	7.8	20.6	44.5	97.2	140.8	236.4	180.2	238.2	216.7	178.0	137.3	43.6	62.6	146.8

Table 9: Incidence Cases of Cancer by Most Valid Basis of Diagnosis and Site (ICD-10) with Percentages, Aurangabad, 2005-2009, Male.

ICD-10	SITE	Microscopic		Clinical		Clin Invst		DCO		Total	
		#	%	#	%	#	%	#	%	#	%
C00	Lip	8	100.0	0	0.0	0	0.0	0	0.0	8	100.0
C01-02	Tongue	78	98.7	0	0.0	0	0.0	1	1.3	79	100.0
C03	Gum	19	95.0	1	5.0	0	0.0	0	0.0	20	100.0
C04-06	Other Mouth	65	95.6	0	0.0	2	2.9	1	1.5	68	100.0
C07-08	Salivary Gland	4	66.7	0	0.0	2	33.3	0	0.0	6	100.0
C09-10	Oropharynx	25	96.2	0	0.0	0	0.0	1	3.8	26	100.0
C11	Nasopharynx	10	100.0	0	0.0	0	0.0	0	0.0	10	100.0
C12-13	Hypopharynx	36	97.3	0	0.0	1	2.7	0	0.0	37	100.0
C14	Other Oral	7	87.5	0	0.0	0	0.0	1	12.5	8	100.0
C15	Oesophagus	74	96.1	0	0.0	1	1.3	2	2.6	77	100.0
C16	Stomach	26	92.9	0	0.0	0	0.0	2	7.1	28	100.0
C17	Small Intenstine	1	100.0	0	0.0	0	0.0	0	0.0	1	100.0
C18	Colon	31	93.9	1	3.0	0	0.0	1	3.0	33	100.0
C19-21	Rectum	41	93.2	2	4.5	0	0.0	1	2.3	44	100.0
C22	Liver	24	92.3	1	3.8	0	0.0	1	3.8	26	100.0
C23-24	Gall Bladder	9	100.0	0	0.0	0	0.0	0	0.0	9	100.0
C25	Pancreas	8	80.0	1	10.0	0	0.0	1	10.0	10	100.0
C30-31	Nose, sinus	7	87.5	1	12.5	0	0.0	0	0.0	8	100.0
C32	Larynx	87	95.6	0	0.0	1	1.1	3	3.3	91	100.0
C33-34	Lung	51	44.3	6	5.2	35	30.4	23	20.0	115	100.0
C37-38	Mediastinum, Plura	5	41.7	1	8.3	6	50.0	0	0.0	12	100.0
C40-41	Bone	26	100.0	0	0.0	0	0.0	0	0.0	26	100.0
C44	Skin Others	18	100.0	0	0.0	0	0.0	0	0.0	18	100.0
C48	Retroperitonium	0	0.0	0	0.0	0	0.0	2	100.0	2	100.0
C49	Connective & Soft tissue	8	100.0	0	0.0	0	0.0	0	0.0	8	100.0
C50	Breast	5	100.0	0	0.0	0	0.0	0	0.0	5	100.0
C60	Penis	10	100.0	0	0.0	0	0.0	0	0.0	10	100.0
C61	Prostate	32	86.5	2	5.4	0	0.0	3	8.1	37	100.0
C62	Testis	12	80.0	3	20.0	0	0.0	0	0.0	15	100.0
C63	Other Male Gen Org	1	100.0	0	0.0	0	0.0	0	0.0	1	100.0
C64-65	Kidney	17	94.4	0	0.0	0	0.0	1	5.6	18	100.0
C66-68	Urinary Bladder	21	95.5	0	0.0	0	0.0	1	4.5	22	100.0
C70-72	Brain	39	97.5	0	0.0	0	0.0	1	2.5	40	100.0
C73	Thyroid	3	75.0	0	0.0	1	25.0	0	0.0	4	100.0
C74-75	Oth Endocrine Gland	2	100.0	0	0.0	0	0.0	0	0.0	2	100.0
C76	Oth III Def Site	3	100.0	0	0.0	0	0.0	0	0.0	3	100.0
C77	Lymphnodes	6	66.7	2	22.2	0	0.0	1	11.1	9	100.0
C78	Sec Resp & Dig	2	33.3	0	0.0	0	0.0	4	66.7	6	100.0
C79	Sec Others	6	66.7	2	22.2	0	0.0	1	11.1	9	100.0
C80	Unk Primary	17	53.1	5	15.6	0	0.0	10	31.3	32	100.0
C81	Hodgkin Lymphma	14	100.0	0	0.0	0	0.0	0	0.0	14	100.0
C82-85	N.H. Lymphoma	53	100.0	0	0.0	0	0.0	0	0.0	53	100.0
C90	Multiple Myeloma	6	100.0	0	0.0	0	0.0	0	0.0	6	100.0
C91	Lymphoid Leukemia	32	100.0	0	0.0	0	0.0	0	0.0	32	100.0
C92	Myeloid Leukemia	46	100.0	0	0.0	0	0.0	0	0.0	46	100.0
C93-95	Other Leukemia	11	100.0	0	0.0	0	0.0	0	0.0	11	100.0
Total	All Site	1006	87.9	28	2.4	49	4.3	62	5.4	1145	100.0

Table 10: Incidence Cases of Cancer by Most Valid Basis of Diagnosis and Site (ICD-10) with Percentages, Aurangabad, 2005-2009, Female.

ICD-10	SITE	Microscopic		Clinical		Clin Invst		DCO		Total	
		#	%	#	%	#	%	#	%	#	%
C01-02	Tongue	29	93.5	0	0.0	1	3.2	1	3.2	31	100.0
C03	Gum	7	100.0	0	0.0	0	0.0	0	0.0	7	100.0
C04-06	Other Mouth	29	90.6	0	0.0	1	3.1	2	6.3	32	100.0
C07-08	Salivary Gland	3	75.0	1	25.0	0	0.0	0	0.0	4	100.0
C09-10	Oropharynx	7	87.5	0	0.0	0	0.0	1	12.5	8	100.0
C11	Nasopharynx	2	100.0	0	0.0	0	0.0	0	0.0	2	100.0
C12-13	Hypopharynx	9	100.0	0	0.0	0	0.0	0	0.0	9	100.0
C14	Other Oral	3	100.0	0	0.0	0	0.0	0	0.0	3	100.0
C15	Oesophagus	61	95.3	0	0.0	1	1.6	2	3.1	64	100.0
C16	Stomach	18	94.7	1	5.3	0	0.0	0	0.0	19	100.0
C18	Colon	20	90.9	1	4.5	1	4.5	0	0.0	22	100.0
C19-21	Rectum	17	94.4	0	0.0	0	0.0	1	5.6	18	100.0
C22	Liver	17	94.4	0	0.0	0	0.0	1	5.6	18	100.0
C23-24	Gall Bladder	3	75.0	1	25.0	0	0.0	0	0.0	4	100.0
C25	Pancreas	4	57.1	2	28.6	0	0.0	1	14.3	7	100.0
C30-31	Nose, sinus	4	100.0	0	0.0	0	0.0	0	0.0	4	100.0
C32	Larynx	10	90.9	0	0.0	1	9.1	0	0.0	11	100.0
C33-34	Lung	13	30.2	4	9.3	21	48.8	5	11.6	43	100.0
C37-38	Mediastinum, Plura	5	50.0	2	20.0	3	30.0	0	0.0	10	100.0
C40-41	Bone	7	100.0	0	0.0	0	0.0	0	0.0	7	100.0
C43	Skin Melanoma	1	100.0	0	0.0	0	0.0	0	0.0	1	100.0
C44	Skin Others	20	100.0	0	0.0	0	0.0	0	0.0	20	100.0
C48	Retroperitonium	3	75.0	0	0.0	1	25.0	0	0.0	4	100.0
C49	Connective & Soft tissue	9	100.0	0	0.0	0	0.0	0	0.0	9	100.0
C50	Breast	302	97.1	1	0.3	3	1.0	5	1.6	311	100.0
C51-52	Other Fem Gen Org	4	100.0	0	0.0	0	0.0	0	0.0	4	100.0
C53	Cervix Uteri	237	97.9	1	0.4	0	0.0	4	1.7	242	100.0
C54	Corpus Uteri	19	95.0	0	0.0	0	0.0	1	5.0	20	100.0
C56	Ovary	62	95.4	2	3.1	0	0.0	1	1.5	65	100.0
C57-58	Oth Unsp Fem Gen Org	4	100.0	0	0.0	0	0.0	0	0.0	4	100.0
C64-65	Kidney	9	100.0	0	0.0	0	0.0	0	0.0	9	100.0
C66-68	Urinary Bladder	10	90.9	0	0.0	0	0.0	1	9.1	11	100.0
C69	Eye	1	50.0	1	50.0	0	0.0	0	0.0	2	100.0
C70-72	Brain	19	86.4	0	0.0	1	4.5	2	9.1	22	100.0
C73	Thyroid	15	93.8	0	0.0	0	0.0	1	6.3	16	100.0
C76	Oth III Def Site	1	100.0	0	0.0	0	0.0	0	0.0	1	100.0
C77	Lymphnodes	0	0.0	1	33.3	0	0.0	2	66.7	3	100.0
C78	Sec Resp & Dig	1	100.0	0	0.0	0	0.0	0	0.0	1	100.0
C79	Sec Others	3	75.0	1	25.0	0	0.0	0	0.0	4	100.0
C80	Unk Primary	8	40.0	4	20.0	0	0.0	8	40.0	20	100.0
C81	Hodgkin Lymphoma	5	100.0	0	0.0	0	0.0	0	0.0	5	100.0
C82-85	N.H. Lymphoma	27	100.0	0	0.0	0	0.0	0	0.0	27	100.0
C90	Multiple Myeloma	7	100.0	0	0.0	0	0.0	0	0.0	7	100.0
C91	Lymphoid Leukemia	21	100.0	0	0.0	0	0.0	0	0.0	21	100.0
C92	Myeloid Leukemia	27	100.0	0	0.0	0	0.0	0	0.0	27	100.0
C93-95	Other Leukemia	8	100.0	0	0.0	0	0.0	0	0.0	8	100.0
Total	All Site	1091	91.9	23	1.9	34	2.9	39	3.3	1187	100.0

Table 11: Incidence Cases of Cancer by Religion and Site (ICD-10) with Crude Rates per 100,000 Population, Aurangabad, 2005-2009, Male.

ICD-10	SITE	Hindu		Muslim		Others		Total	
		#	%	#	%	#	%	#	%
C00	Lip	6	0.4	2	0.2	0	0.0	8	0.3
C01-02	Tongue	58	3.6	20	2.3	1	0.2	79	2.6
C03	Gum	15	0.9	4	0.5	1	0.2	20	0.7
C04-06	Other Mouth	47	2.9	20	2.3	1	0.2	68	2.3
C07-08	Salivary Gland	6	0.4	0	0.0	0	0.0	6	0.2
C09-10	Oropharynx	20	1.2	6	0.7	0	0.0	26	0.9
C11	Nasopharynx	5	0.3	5	0.6	0	0.0	10	0.3
C12-13	Hypopharynx	31	1.9	5	0.6	1	0.2	37	1.2
C14	Other Oral	6	0.4	2	0.2	0	0.0	8	0.3
C15	Oesophagus	67	4.2	10	1.1	0	0.0	77	2.6
C16	Stomach	22	1.4	6	0.7	0	0.0	28	0.9
C17	Small Intestine	1	0.1	0	0.0	0	0.0	1	0.0
C18	Colon	26	1.6	7	0.8	0	0.0	33	1.1
C19-21	Rectum	32	2.0	12	1.4	0	0.0	44	1.5
C22	Liver	17	1.1	9	1.0	0	0.0	26	0.9
C23-24	Gall Bladder	4	0.2	4	0.5	1	0.2	9	0.3
C25	Pancreas	6	0.4	4	0.5	0	0.0	10	0.3
C30-31	Nose, sinus	5	0.3	3	0.3	0	0.0	8	0.3
C32	Larynx	67	4.2	24	2.7	0	0.0	91	3.0
C33-34	Lung	72	4.5	42	4.8	1	0.2	115	3.9
C37-38	Mediastinum, Plura	8	0.5	4	0.5	0	0.0	12	0.4
C40-41	Bone	17	1.1	8	0.9	1	0.2	26	0.9
C44	Skin Others	15	0.9	3	0.3	0	0.0	18	0.6
C48	Retroperitoneum	1	0.1	1	0.1	0	0.0	2	0.1
C49	Connective & Soft tissue	8	0.5	0	0.0	0	0.0	8	0.3
C50	Breast	3	0.2	2	0.2	0	0.0	5	0.2
C60	Penis	9	0.6	1	0.1	0	0.0	10	0.3
C61	Prostate	25	1.6	12	1.4	0	0.0	37	1.2
C62	Testis	12	0.7	3	0.3	0	0.0	15	0.5
C63	Other Male Gen Org	0	0.0	1	0.1	0	0.0	1	0.0
C64-65	Kidney	10	0.6	7	0.8	1	0.2	18	0.6
C66-68	Urinary Bladder	18	1.1	4	0.5	0	0.0	22	0.7
C70-72	Brain	34	2.1	6	0.7	0	0.0	40	1.3
C73	Thyroid	3	0.2	1	0.1	0	0.0	4	0.1
C74-75	Oth Endocrine Gland	2	0.1	0	0.0	0	0.0	2	0.1
C76	Oth III Def Site	2	0.1	1	0.1	0	0.0	3	0.1
C77	Lymphnodes	6	0.4	3	0.3	0	0.0	9	0.3
C78	Sec Resp & Dig	4	0.2	1	0.1	1	0.2	6	0.2
C79	Sec Others	6	0.4	2	0.2	1	0.2	9	0.3
C80	Unk Primary	22	1.4	10	1.1	0	0.0	32	1.1
C81	Hodgkin Lymphoma	12	0.7	2	0.2	0	0.0	14	0.5
C82-85	N.H. Lymphoma	29	1.8	24	2.7	0	0.0	53	1.8
C90	Multiple Myeloma	4	0.2	2	0.2	0	0.0	6	0.2
C91	Lymphoid Leukemia	25	1.6	7	0.8	0	0.0	32	1.1
C92	Myeloid Leukemia	28	1.7	18	2.0	0	0.0	46	1.5
C93-95	Other Leukemia	9	0.6	2	0.2	0	0.0	11	0.4
Total	All Site	825	51.4	310	35.2	10	2.0	1145	38.3

Table 12: Incidence Cases of Cancer by Religion and Site (ICD-10) with Crude Rates per 100,000 Population, Aurangabad, 2005-2009, Female

ICD-10	SITE	Hindu		Muslim		Others		Total	
		#	%	#	%	#	%	#	%
C01-02	Tongue	24	1.7	7	0.9	0	0.0	31	1.1
C03	Gum	6	0.4	1	0.1	0	0.0	7	0.3
C04-06	Other Mouth	27	1.9	5	0.6	0	0.0	32	1.2
C07-08	Salivary Gland	4	0.3	0	0.0	0	0.0	4	0.1
C09-10	Oropharynx	5	0.3	3	0.4	0	0.0	8	0.3
C11	Nasopharynx	1	0.1	1	0.1	0	0.0	2	0.1
C12-13	Hypopharynx	8	0.6	1	0.1	0	0.0	9	0.3
C14	Other Oral	2	0.1	1	0.1	0	0.0	3	0.1
C15	Oesophagus	51	3.6	13	1.6	0	0.0	64	2.4
C16	Stomach	12	0.8	6	0.7	1	0.2	19	0.7
C18	Colon	14	1.0	8	1.0	0	0.0	22	0.8
C19-21	Rectum	12	0.8	6	0.7	0	0.0	18	0.7
C22	Liver	13	0.9	4	0.5	1	0.2	18	0.7
C23-24	Gall Bladder	3	0.2	0	0.0	1	0.2	4	0.1
C25	Pancreas	7	0.5	0	0.0	0	0.0	7	0.3
C30-31	Nose, sinus	1	0.1	3	0.4	0	0.0	4	0.1
C32	Larynx	11	0.8	0	0.0	0	0.0	11	0.4
C33-34	Lung	35	2.4	8	1.0	0	0.0	43	1.6
C37-38	Mediastinum, Plura	7	0.5	3	0.4	0	0.0	10	0.4
C40-41	Bone	6	0.4	1	0.1	0	0.0	7	0.3
C43	Skin Melanoma	1	0.1	0	0.0	0	0.0	1	0.0
C44	Skin Others	12	0.8	8	1.0	0	0.0	20	0.7
C48	Retroperitonium	2	0.1	2	0.2	0	0.0	4	0.1
C49	Connective & Soft tissue	4	0.3	5	0.6	0	0.0	9	0.3
C50	Breast	230	16.0	78	9.5	3	0.6	311	11.4
C51-52	Other Fem Gen Org	4	0.3	0	0.0	0	0.0	4	0.1
C53	Cervix Uteri	195	13.6	46	5.6	1	0.2	242	8.9
C54	Corpus Uteri	17	1.2	3	0.4	0	0.0	20	0.7
C56	Ovary	48	3.3	17	2.1	0	0.0	65	2.4
C57-58	Oth Unsp Fem Gen Org	4	0.3	0	0.0	0	0.0	4	0.1
C64-65	Kidney	4	0.3	5	0.6	0	0.0	9	0.3
C66-68	Urinary Bladder	9	0.6	2	0.2	0	0.0	11	0.4
C69	Eye	2	0.1	0	0.0	0	0.0	2	0.1
C70-72	Brain	18	1.3	4	0.5	0	0.0	22	0.8
C73	Thyroid	9	0.6	7	0.9	0	0.0	16	0.6
C76	Oth III Def Site	0	0.0	1	0.1	0	0.0	1	0.0
C77	Lymphnodes	1	0.1	2	0.2	0	0.0	3	0.1
C78	Sec Resp & Dig	1	0.1	0	0.0	0	0.0	1	0.0
C79	Sec Others	3	0.2	1	0.1	0	0.0	4	0.1
C80	Unk Primary	15	1.0	5	0.6	0	0.0	20	0.7
C81	Hodgkin Lymphoma	5	0.3	0	0.0	0	0.0	5	0.2
C82-85	N.H. Lymphoma	24	1.7	3	0.4	0	0.0	27	1.0
C90	Multiple Myeloma	6	0.4	1	0.1	0	0.0	7	0.3
C91	Lymphoid Leukemia	12	0.8	9	1.1	0	0.0	21	0.8
C92	Myeloid Leukemia	20	1.4	6	0.7	1	0.2	27	1.0
C93-95	Other Leukemia	5	0.3	3	0.4	0	0.0	8	0.3
Total	All Site	900	62.8	279	33.9	8	1.7	1187	43.6

Table 13: Incidence Cases of Cancer by Language and Site (ICD-10) with Percentages, Aurangabad, 2005-2009, Male

ICD-10	SITE	Marathi		Urdu		Hindi		Others		Total	
		#	%	#	%	#	%	#	%	#	%
C00	Lip	6	0.8	2	0.7	0	0.0	0	0.0	8	0.7
C01-02	Tongue	52	7.0	17	6.2	7	7.6	3	9.4	79	6.9
C03	Gum	13	1.7	4	1.4	1	1.1	2	6.3	20	1.7
C04-06	Other Mouth	43	5.8	17	6.2	6	6.5	2	6.3	68	5.9
C07-08	Salivary Gland	4	0.5	0	0.0	0	0.0	2	6.3	6	0.5
C09-10	Oropharynx	19	2.6	5	1.8	2	2.2	0	0.0	26	2.3
C11	Nasopharynx	5	0.7	5	1.8	0	0.0	0	0.0	10	0.9
C12-13	Hypopharynx	28	3.8	4	1.4	3	3.3	2	6.3	37	3.2
C14	Other Oral	6	0.8	2	0.7	0	0.0	0	0.0	8	0.7
C15	Oesophagus	59	7.9	8	2.9	5	5.4	5	15.6	77	6.7
C16	Stomach	18	2.4	3	1.1	6	6.5	1	3.1	28	2.4
C17	Small Intenstine	1	0.1	0	0.0	0	0.0	0	0.0	1	0.1
C18	Colon	24	3.2	7	2.5	2	2.2	0	0.0	33	2.9
C19-21	Rectum	25	3.4	12	4.3	5	5.4	2	6.3	44	3.8
C22	Liver	16	2.1	9	3.3	1	1.1	0	0.0	26	2.3
C23-24	Gall Bladder	3	0.4	4	1.4	1	1.1	1	3.1	9	0.8
C25	Pancreas	6	0.8	4	1.4	0	0.0	0	0.0	10	0.9
C30-31	Nose, sinus	5	0.7	3	1.1	0	0.0	0	0.0	8	0.7
C32	Larynx	62	8.3	22	8.0	6	6.5	1	3.1	91	7.9
C33-34	Lung	70	9.4	39	14.1	5	5.4	1	3.1	115	10.0
C37-38	Mediastinum, Plura	8	1.1	2	0.7	2	2.2	0	0.0	12	1.0
C40-41	Bone	14	1.9	8	2.9	2	2.2	2	6.3	26	2.3
C44	Skin Others	15	2.0	3	1.1	0	0.0	0	0.0	18	1.6
C48	Retroperitonium	2	0.3	0	0.0	0	0.0	0	0.0	2	0.2
C49	Connective & Soft tissue	7	0.9	0	0.0	1	1.1	0	0.0	8	0.7
C50	Breast	3	0.4	2	0.7	0	0.0	0	0.0	5	0.4
C60	Penis	9	1.2	1	0.4	0	0.0	0	0.0	10	0.9
C61	Prostate	25	3.4	9	3.3	3	3.3	0	0.0	37	3.2
C62	Testis	11	1.5	2	0.7	2	2.2	0	0.0	15	1.3
C63	Other Male Gen Org	0	0.0	1	0.4	0	0.0	0	0.0	1	0.1
C64-65	Kidney	9	1.2	7	2.5	2	2.2	0	0.0	18	1.6
C66-68	Urinary Bladder	15	2.0	4	1.4	1	1.1	2	6.3	22	1.9
C70-72	Brain	28	3.8	6	2.2	5	5.4	1	3.1	40	3.5
C73	Thyroid	2	0.3	1	0.4	1	1.1	0	0.0	4	0.3
C74-75	Oth Endocrine Gland	2	0.3	0	0.0	0	0.0	0	0.0	2	0.2
C76	Oth III Def Site	2	0.3	1	0.4	0	0.0	0	0.0	3	0.3
C77	Lymphnodes	5	0.7	3	1.1	1	1.1	0	0.0	9	0.8
C78	Sec Resp & Dig	4	0.5	1	0.4	0	0.0	1	3.1	6	0.5
C79	Sec Others	6	0.8	2	0.7	1	1.1	0	0.0	9	0.8
C80	Unk Primary	20	2.7	10	3.6	1	1.1	1	3.1	32	2.8
C81	Hodgkin Lymphoma	11	1.5	2	0.7	1	1.1	0	0.0	14	1.2
C82-85	N.H. Lymphoma	23	3.1	22	8.0	6	6.5	2	6.3	53	4.6
C90	Multiple Myeloma	3	0.4	1	0.4	2	2.2	0	0.0	6	0.5
C91	Lymphoid Leukemia	21	2.8	5	1.8	5	5.4	1	3.1	32	2.8
C92	Myeloid Leukemia	26	3.5	14	5.1	6	6.5	0	0.0	46	4.0
C93-95	Other Leukemia	9	1.2	2	0.7	0	0.0	0	0.0	11	1.0
Total	All Site	745	100.0	276	100.0	92	100.0	32	100.0	1145	100.0

Table 14: Incidence Cases of Cancer by Language and Site (ICD-10) with Percentages, Aurangabad, 2005-2009, Female.

ICD-10	SITE	Marathi		Urdu		Hindi		Others		Total	
		#	%	#	%	#	%	#	%	#	%
C01-02	Tongue	22	2.6	7	2.9	2	2.4	0	0.0	31	2.6
C03	Gum	6	0.7	0	0.0	0	0.0	1	4.3	7	0.6
C04-06	Other Mouth	25	3.0	5	2.1	1	1.2	1	4.3	32	2.7
C07-08	Salivary Gland	4	0.5	0	0.0	0	0.0	0	0.0	4	0.3
C09-10	Oropharynx	5	0.6	3	1.2	0	0.0	0	0.0	8	0.7
C11	Nasopharynx	1	0.1	1	0.4	0	0.0	0	0.0	2	0.2
C12-13	Hypopharynx	8	1.0	1	0.4	0	0.0	0	0.0	9	0.8
C14	Other Oral	2	0.2	1	0.4	0	0.0	0	0.0	3	0.3
C15	Oesophagus	44	5.2	12	5.0	6	7.3	2	8.7	64	5.4
C16	Stomach	13	1.5	6	2.5	0	0.0	0	0.0	19	1.6
C18	Colon	12	1.4	8	3.3	2	2.4	0	0.0	22	1.9
C19-21	Rectum	12	1.4	5	2.1	1	1.2	0	0.0	18	1.5
C22	Liver	11	1.3	3	1.2	3	3.7	1	4.3	18	1.5
C23-24	Gall Bladder	3	0.4	0	0.0	0	0.0	1	4.3	4	0.3
C25	Pancreas	7	0.8	0	0.0	0	0.0	0	0.0	7	0.6
C30-31	Nose, sinus	1	0.1	2	0.8	1	1.2	0	0.0	4	0.3
C32	Larynx	9	1.1	0	0.0	2	2.4	0	0.0	11	0.9
C33-34	Lung	32	3.8	8	3.3	2	2.4	1	4.3	43	3.6
C37-38	Mediastinum, Plura	7	0.8	3	1.2	0	0.0	0	0.0	10	0.8
C40-41	Bone	5	0.6	1	0.4	1	1.2	0	0.0	7	0.6
C43	Skin Melanoma	1	0.1	0	0.0	0	0.0	0	0.0	1	0.1
C44	Skin Others	9	1.1	6	2.5	3	3.7	2	8.7	20	1.7
C48	Retroperitonium	2	0.2	2	0.8	0	0.0	0	0.0	4	0.3
C49	Connective & Soft tissue	4	0.5	4	1.7	1	1.2	0	0.0	9	0.8
C50	Breast	217	25.8	63	26.0	24	29.3	7	30.4	311	26.2
C51-52	Other Fem Gen Org	4	0.5	0	0.0	0	0.0	0	0.0	4	0.3
C53	Cervix Uteri	187	22.3	39	16.1	14	17.1	2	8.7	242	20.4
C54	Corpus Uteri	17	2.0	2	0.8	1	1.2	0	0.0	20	1.7
C56	Ovary	45	5.4	15	6.2	4	4.9	1	4.3	65	5.5
C57-58	Oth Unsp Fem Gen Org	4	0.5	0	0.0	0	0.0	0	0.0	4	0.3
C64-65	Kidney	4	0.5	4	1.7	1	1.2	0	0.0	9	0.8
C66-68	Urinary Bladder	7	0.8	3	1.2	0	0.0	1	4.3	11	0.9
C69	Eye	2	0.2	0	0.0	0	0.0	0	0.0	2	0.2
C70-72	Brain	15	1.8	3	1.2	2	2.4	2	8.7	22	1.9
C73	Thyroid	8	1.0	6	2.5	2	2.4	0	0.0	16	1.3
C76	Oth III Def Site	0	0.0	1	0.4	0	0.0	0	0.0	1	0.1
C77	Lymphnodes	1	0.1	2	0.8	0	0.0	0	0.0	3	0.3
C78	Sec Resp & Dig	1	0.1	0	0.0	0	0.0	0	0.0	1	0.1
C79	Sec Others	3	0.4	0	0.0	1	1.2	0	0.0	4	0.3
C80	Unk Primary	14	1.7	4	1.7	2	2.4	0	0.0	20	1.7
C81	Hodgkin Lymphoma	5	0.6	0	0.0	0	0.0	0	0.0	5	0.4
C82-85	N.H. Lymphoma	23	2.7	3	1.2	1	1.2	0	0.0	27	2.3
C90	Multiple Myeloma	5	0.6	1	0.4	1	1.2	0	0.0	7	0.6
C91	Lymphoid Leukemia	9	1.1	9	3.7	3	3.7	0	0.0	21	1.8
C92	Myeloid Leukemia	20	2.4	6	2.5	0	0.0	1	4.3	27	2.3
C93-95	Other Leukemia	4	0.5	3	1.2	1	1.2	0	0.0	8	0.7
Total	All Site	840	100.0	242	100.0	82	100.0	23	100.0	1187	100.0

Table 15: Incidence Cases of Cancer by Marital Status and Site (ICD-10) with Percentages, Aurangabad, 2005-2009, Male.

ICD-10	SITE	Unmarried		Married		Widowed		Total	
		#	%	#	%	#	%	#	%
C00	Lip	0	0.0	8	0.8	0	0.0	8	0.7
C01-02	Tongue	1	1.2	78	7.4	0	0.0	79	6.9
C03	Gum	0	0.0	20	1.9	0	0.0	20	1.7
C04-06	Other Mouth	2	2.4	66	6.3	0	0.0	68	5.9
C07-08	Salivary Gland	0	0.0	6	0.6	0	0.0	6	0.5
C09-10	Oropharynx	0	0.0	26	2.5	0	0.0	26	2.3
C11	Nasopharynx	4	4.9	6	0.6	0	0.0	10	0.9
C12-13	Hypopharynx	0	0.0	36	3.4	1	10.0	37	3.2
C14	Other Oral	0	0.0	8	0.8	0	0.0	8	0.7
C15	Oesophagus	1	1.2	76	7.2	0	0.0	77	6.7
C16	Stomach	1	1.2	26	2.5	1	10.0	28	2.4
C17	Small Intenstine	0	0.0	1	0.1	0	0.0	1	0.1
C18	Colon	0	0.0	33	3.1	0	0.0	33	2.9
C19-21	Rectum	6	7.3	38	3.6	0	0.0	44	3.8
C22	Liver	0	0.0	26	2.5	0	0.0	26	2.3
C23-24	Gall Bladder	0	0.0	9	0.9	0	0.0	9	0.8
C25	Pancreas	0	0.0	10	0.9	0	0.0	10	0.9
C30-31	Nose, sinus	1	1.2	7	0.7	0	0.0	8	0.7
C32	Larynx	0	0.0	90	8.5	1	10.0	91	7.9
C33-34	Lung	1	1.2	110	10.4	4	40.0	115	10.0
C37-38	Mediastinum, Plura	0	0.0	12	1.1	0	0.0	12	1.0
C40-41	Bone	6	7.3	19	1.8	1	10.0	26	2.3
C44	Skin Others	0	0.0	18	1.7	0	0.0	18	1.6
C48	Retroperitonium	0	0.0	2	0.2	0	0.0	2	0.2
C49	Connective & Soft tissue	1	1.2	7	0.7	0	0.0	8	0.7
C50	Breast	0	0.0	5	0.5	0	0.0	5	0.4
C60	Penis	0	0.0	10	0.9	0	0.0	10	0.9
C61	Prostate	0	0.0	37	3.5	0	0.0	37	3.2
C62	Testis	0	0.0	15	1.4	0	0.0	15	1.3
C63	Other Male Gen Org	0	0.0	1	0.1	0	0.0	1	0.1
C64-65	Kidney	3	3.7	15	1.4	0	0.0	18	1.6
C66-68	Urinary Bladder	0	0.0	22	2.1	0	0.0	22	1.9
C70-72	Brain	8	9.8	32	3.0	0	0.0	40	3.5
C73	Thyroid	0	0.0	4	0.4	0	0.0	4	0.3
C74-75	Oth Endocrine Gland	1	1.2	1	0.1	0	0.0	2	0.2
C76	Oth III Def Site	0	0.0	3	0.3	0	0.0	3	0.3
C77	Lymphnodes	0	0.0	8	0.8	1	10.0	9	0.8
C78	Sec Resp & Dig	0	0.0	6	0.6	0	0.0	6	0.5
C79	Sec Others	0	0.0	9	0.9	0	0.0	9	0.8
C80	Unk Primary	2	2.4	30	2.8	0	0.0	32	2.8
C81	Hodgkin Lymphoma	3	3.7	11	1.0	0	0.0	14	1.2
C82-85	N.H. Lymphoma	13	15.9	39	3.7	1	10.0	53	4.6
C90	Multiple Myeloma	0	0.0	6	0.6	0	0.0	6	0.5
C91	Lymphoid Leukemia	13	15.9	19	1.8	0	0.0	32	2.8
C92	Myeloid Leukemia	11	13.4	35	3.3	0	0.0	46	4.0
C93-95	Other Leukemia	4	4.9	7	0.7	0	0.0	11	1.0
Total	All Site	82	100.0	1053	100.0	10	100.0	1145	100.0

Table 16: Incidence Cases of Cancer by Marital Status and Site (ICD-10) with Percentages, Aurangabad, 2005-2009, Female

ICD-10	SITE	Unmarried		Married		Widowed		Total	
		#	%	#	%	#	%	#	%
C01-02	Tongue	1	1.8	29	2.6	1	14.3	31	2.6
C03	Gum	0	0.0	7	0.6	0	0.0	7	0.6
C04-06	Other Mouth	0	0.0	32	2.8	0	0.0	32	2.7
C07-08	Salivary Gland	0	0.0	4	0.4	0	0.0	4	0.3
C09-10	Oropharynx	1	1.8	7	0.6	0	0.0	8	0.7
C11	Nasopharynx	1	1.8	1	0.1	0	0.0	2	0.2
C12-13	Hypopharynx	0	0.0	9	0.8	0	0.0	9	0.8
C14	Other Oral	0	0.0	3	0.3	0	0.0	3	0.3
C15	Oesophagus	0	0.0	62	5.5	2	28.6	64	5.4
C16	Stomach	0	0.0	19	1.7	0	0.0	19	1.6
C18	Colon	0	0.0	22	2.0	0	0.0	22	1.9
C19-21	Rectum	1	1.8	17	1.5	0	0.0	18	1.5
C22	Liver	0	0.0	17	1.5	1	14.3	18	1.5
C23-24	Gall Bladder	0	0.0	4	0.4	0	0.0	4	0.3
C25	Pancreas	0	0.0	7	0.6	0	0.0	7	0.6
C30-31	Nose, sinus	0	0.0	4	0.4	0	0.0	4	0.3
C32	Larynx	0	0.0	11	1.0	0	0.0	11	0.9
C33-34	Lung	1	1.8	41	3.6	1	14.3	43	3.6
C37-38	Mediastinum, Plura	1	1.8	9	0.8	0	0.0	10	0.8
C40-41	Bone	4	7.3	3	0.3	0	0.0	7	0.6
C43	Skin Melanoma	0	0.0	1	0.1	0	0.0	1	0.1
C44	Skin Others	0	0.0	20	1.8	0	0.0	20	1.7
C48	Retroperitonium	0	0.0	4	0.4	0	0.0	4	0.3
C49	Connective & Soft tissue	3	5.5	6	0.5	0	0.0	9	0.8
C50	Breast	0	0.0	310	27.6	1	14.3	311	26.2
C51-52	Other Fem Gen Org	0	0.0	4	0.4	0	0.0	4	0.3
C53	Cervix Uteri	1	1.8	241	21.4	0	0.0	242	20.4
C54	Corpus Uteri	0	0.0	20	1.8	0	0.0	20	1.7
C56	Ovary	2	3.6	63	5.6	0	0.0	65	5.5
C57-58	Oth Unsp Fem Gen Org	1	1.8	3	0.3	0	0.0	4	0.3
C64-65	Kidney	3	5.5	6	0.5	0	0.0	9	0.8
C66-68	Urinary Bladder	0	0.0	11	1.0	0	0.0	11	0.9
C69	Eye	1	1.8	1	0.1	0	0.0	2	0.2
C70-72	Brain	3	5.5	19	1.7	0	0.0	22	1.9
C73	Thyroid	1	1.8	15	1.3	0	0.0	16	1.3
C76	Oth III Def Site	0	0.0	1	0.1	0	0.0	1	0.1
C77	Lymphnodes	0	0.0	2	0.2	1	14.3	3	0.3
C78	Sec Resp & Dig	0	0.0	1	0.1	0	0.0	1	0.1
C79	Sec Others	0	0.0	4	0.4	0	0.0	4	0.3
C80	Unk Primary	2	3.6	18	1.6	0	0.0	20	1.7
C81	Hodgkin Lymphoma	2	3.6	3	0.3	0	0.0	5	0.4
C82-85	N.H. Lymphoma	2	3.6	25	2.2	0	0.0	27	2.3
C90	Multiple Myeloma	0	0.0	7	0.6	0	0.0	7	0.6
C91	Lymphoid Leukemia	14	25.5	7	0.6	0	0.0	21	1.8
C92	Myeloid Leukemia	6	10.9	21	1.9	0	0.0	27	2.3
C93-95	Other Leukemia	4	7.3	4	0.4	0	0.0	8	0.7
Total	All Site	55	100.0	1125	100.0	7	100.0	1187	100.0

Table 17: Incidence Cases of Cancer by Education and Site (ICD-10) with Percentages, Aurangabad, 2005-2009, Male.

ICD-10	SITE	Illiterate		Literate		Prim+Mid		Sec+Tech		College		Unknown		Total	
		#	%	#	%	#	%	#	%	#	%	#	%	#	%
C00	Lip	1	0.3	2	0.7	4	0.9	1	1.3	0	0.0	0	0.0	8	0.7
C01-02	Tongue	21	6.8	17	6.3	32	7.1	8	10.3	0	0.0	1	20.0	79	6.9
C03	Gum	3	1.0	5	1.9	9	2.0	1	1.3	2	5.9	0	0.0	20	1.7
C04-06	Other Mouth	21	6.8	14	5.2	27	6.0	6	7.7	0	0.0	0	0.0	68	5.9
C07-08	Salivary Gland	2	0.6	1	0.4	3	0.7	0	0.0	0	0.0	0	0.0	6	0.5
C09-10	Oropharynx	14	4.5	3	1.1	9	2.0	0	0.0	0	0.0	0	0.0	26	2.3
C11	Nasopharynx	2	0.6	4	1.5	3	0.7	1	1.3	0	0.0	0	0.0	10	0.9
C12-13	Hypopharynx	15	4.9	4	1.5	16	3.5	1	1.3	1	2.9	0	0.0	37	3.2
C14	Other Oral	2	0.6	1	0.4	5	1.1	0	0.0	0	0.0	0	0.0	8	0.7
C15	Oesophagus	23	7.5	17	6.3	31	6.9	6	7.7	0	0.0	0	0.0	77	6.7
C16	Stomach	8	2.6	5	1.9	10	2.2	2	2.6	3	8.8	0	0.0	28	2.4
C17	Small Intestine	0	0.0	1	0.4	0	0.0	0	0.0	0	0.0	0	0.0	1	0.1
C18	Colon	4	1.3	8	3.0	16	3.5	3	3.8	1	2.9	1	20.0	33	2.9
C19-21	Rectum	5	1.6	15	5.6	18	4.0	5	6.4	1	2.9	0	0.0	44	3.8
C22	Liver	7	2.3	6	2.2	11	2.4	1	1.3	1	2.9	0	0.0	26	2.3
C23-24	Gall Bladder	0	0.0	3	1.1	4	0.9	1	1.3	1	2.9	0	0.0	9	0.8
C25	Pancreas	1	0.3	1	0.4	4	0.9	4	5.1	0	0.0	0	0.0	10	0.9
C30-31	Nose, sinus	1	0.3	0	0.0	4	0.9	1	1.3	2	5.9	0	0.0	8	0.7
C32	Larynx	36	11.7	19	7.1	34	7.5	2	2.6	0	0.0	0	0.0	91	7.9
C33-34	Lung	29	9.4	35	13.1	41	9.1	8	10.3	1	2.9	1	20.0	115	10.0
C37-38	Mediastinum, Plura	6	1.9	0	0.0	4	0.9	2	2.6	0	0.0	0	0.0	12	1.0
C40-41	Bone	4	1.3	7	2.6	10	2.2	2	2.6	2	5.9	1	20.0	26	2.3
C44	Skin Others	3	1.0	4	1.5	9	2.0	2	2.6	0	0.0	0	0.0	18	1.6
C48	Retroperitoneum	0	0.0	0	0.0	1	0.2	1	1.3	0	0.0	0	0.0	2	0.2
C49	Connective & Soft tissue	2	0.6	1	0.4	5	1.1	0	0.0	0	0.0	0	0.0	8	0.7
C50	Breast	2	0.6	2	0.7	1	0.2	0	0.0	0	0.0	0	0.0	5	0.4
C60	Penis	3	1.0	3	1.1	3	0.7	1	1.3	0	0.0	0	0.0	10	0.9
C61	Prostate	16	5.2	4	1.5	13	2.9	2	2.6	2	5.9	0	0.0	37	3.2
C62	Testis	6	1.9	1	0.4	6	1.3	2	2.6	0	0.0	0	0.0	15	1.3
C63	Other Male Gen Org	0	0.0	0	0.0	0	0.0	0	0.0	1	2.9	0	0.0	1	0.1
C64-65	Kidney	5	1.6	2	0.7	10	2.2	0	0.0	1	2.9	0	0.0	18	1.6
C66-68	Urinary Bladder	9	2.9	4	1.5	6	1.3	2	2.6	1	2.9	0	0.0	22	1.9
C70-72	Brain	8	2.6	9	3.4	16	3.5	1	1.3	6	17.6	0	0.0	40	3.5
C73	Thyroid	1	0.3	1	0.4	2	0.4	0	0.0	0	0.0	0	0.0	4	0.3
C74-75	Oth Endocrine Gland	0	0.0	2	0.7	0	0.0	0	0.0	0	0.0	0	0.0	2	0.2
C76	Oth III Def Site	1	0.3	0	0.0	2	0.4	0	0.0	0	0.0	0	0.0	3	0.3
C77	Lymphnodes	3	1.0	5	1.9	0	0.0	1	1.3	0	0.0	0	0.0	9	0.8
C78	Sec Resp & Dig	0	0.0	3	1.1	3	0.7	0	0.0	0	0.0	0	0.0	6	0.5
C79	Sec Others	1	0.3	4	1.5	4	0.9	0	0.0	0	0.0	0	0.0	9	0.8
C80	Unk Primary	12	3.9	9	3.4	11	2.4	0	0.0	0	0.0	0	0.0	32	2.8
C81	Hodgkin Lymphoma	4	1.3	4	1.5	5	1.1	0	0.0	1	2.9	0	0.0	14	1.2
C82-85	N.H. Lymphoma	11	3.6	13	4.9	22	4.9	4	5.1	3	8.8	0	0.0	53	4.6
C90	Multiple Myeloma	2	0.6	0	0.0	3	0.7	1	1.3	0	0.0	0	0.0	6	0.5
C91	Lymphoid Leukemia	6	1.9	13	4.9	10	2.2	3	3.8	0	0.0	0	0.0	32	2.8
C92	Myeloid Leukemia	7	2.3	12	4.5	21	4.6	3	3.8	3	8.8	0	0.0	46	4.0
C93-95	Other Leukemia	1	0.3	4	1.5	4	0.9	0	0.0	1	2.9	1	20.0	11	1.0
Total	All Site	308	100.0	268	100.0	452	100.0	78	100.0	34	100.0	5	100.0	1145	100.0

Table 18: Incidence Cases of Cancer by Education and Site (ICD-10) with Percentages, Aurangabad, 2005-2009, Female

ICD-10	SITE	Illiterate		Literate		Prim+Mid		Sec+Tech		College		Unknown		Total	
		#	%	#	%	#	%	#	%	#	%	#	%	#	%
C01-02	Tongue	14	2.5	3	1.3	13	3.6	0	0.0	1	8.3	0	0.0	31	2.6
C03	Gum	2	0.4	2	0.9	3	0.8	0	0.0	0	0.0	0	0.0	7	0.6
C04-06	Other Mouth	24	4.3	4	1.8	4	1.1	0	0.0	0	0.0	0	0.0	32	2.7
C07-08	Salivary Gland	1	0.2	1	0.4	2	0.6	0	0.0	0	0.0	0	0.0	4	0.3
C09-10	Oropharynx	5	0.9	1	0.4	2	0.6	0	0.0	0	0.0	0	0.0	8	0.7
C11	Nasopharynx	1	0.2	0	0.0	1	0.3	0	0.0	0	0.0	0	0.0	2	0.2
C12-13	Hypopharynx	6	1.1	0	0.0	3	0.8	0	0.0	0	0.0	0	0.0	9	0.8
C14	Other Oral	2	0.4	1	0.4	0	0.0	0	0.0	0	0.0	0	0.0	3	0.3
C15	Oesophagus	31	5.6	15	6.7	18	5.0	0	0.0	0	0.0	0	0.0	64	5.4
C16	Stomach	7	1.3	6	2.7	4	1.1	0	0.0	2	16.7	0	0.0	19	1.6
C18	Colon	9	1.6	7	3.1	4	1.1	2	6.5	0	0.0	0	0.0	22	1.9
C19-21	Rectum	6	1.1	4	1.8	7	2.0	1	3.2	0	0.0	0	0.0	18	1.5
C22	Liver	8	1.4	6	2.7	4	1.1	0	0.0	0	0.0	0	0.0	18	1.5
C23-24	Gall Bladder	1	0.2	2	0.9	1	0.3	0	0.0	0	0.0	0	0.0	4	0.3
C25	Pancreas	3	0.5	1	0.4	3	0.8	0	0.0	0	0.0	0	0.0	7	0.6
C30-31	Nose, sinus	4	0.7	0	0.0	0	0.0	0	0.0	0	0.0	0	0.0	4	0.3
C32	Larynx	8	1.4	3	1.3	0	0.0	0	0.0	0	0.0	0	0.0	11	0.9
C33-34	Lung	22	3.9	8	3.6	12	3.4	1	3.2	0	0.0	0	0.0	43	3.6
C37-38	Mediastinum, Plura	6	1.1	0	0.0	4	1.1	0	0.0	0	0.0	0	0.0	10	0.8
C40-41	Bone	3	0.5	1	0.4	2	0.6	1	3.2	0	0.0	0	0.0	7	0.6
C43	Skin Melanoma	1	0.2	0	0.0	0	0.0	0	0.0	0	0.0	0	0.0	1	0.1
C44	Skin Others	10	1.8	3	1.3	5	1.4	2	6.5	0	0.0	0	0.0	20	1.7
C48	Retroperitonium	2	0.4	2	0.9	0	0.0	0	0.0	0	0.0	0	0.0	4	0.3
C49	Connective & Soft tissue	1	0.2	2	0.9	6	1.7	0	0.0	0	0.0	0	0.0	9	0.8
C50	Breast	109	19.6	59	26.2	127	35.5	8	25.8	6	50.0	2	50.0	311	26.2
C51-52	Other Fem Gen Org	2	0.4	0	0.0	2	0.6	0	0.0	0	0.0	0	0.0	4	0.3
C53	Cervix Uteri	144	25.9	34	15.1	59	16.5	4	12.9	0	0.0	1	25.0	242	20.4
C54	Corpus Uteri	11	2.0	3	1.3	6	1.7	0	0.0	0	0.0	0	0.0	20	1.7
C56	Ovary	27	4.8	18	8.0	18	5.0	2	6.5	0	0.0	0	0.0	65	5.5
C57-58	Oth Unsp Fem Gen Org	1	0.2	0	0.0	2	0.6	1	3.2	0	0.0	0	0.0	4	0.3
C64-65	Kidney	5	0.9	1	0.4	3	0.8	0	0.0	0	0.0	0	0.0	9	0.8
C66-68	Urinary Bladder	5	0.9	2	0.9	4	1.1	0	0.0	0	0.0	0	0.0	11	0.9
C69	Eye	2	0.4	0	0.0	0	0.0	0	0.0	0	0.0	0	0.0	2	0.2
C70-72	Brain	9	1.6	6	2.7	4	1.1	3	9.7	0	0.0	0	0.0	22	1.9
C73	Thyroid	4	0.7	4	1.8	7	2.0	1	3.2	0	0.0	0	0.0	16	1.3
C76	Oth III Def Site	0	0.0	0	0.0	1	0.3	0	0.0	0	0.0	0	0.0	1	0.1
C77	Lymphnodes	2	0.4	1	0.4	0	0.0	0	0.0	0	0.0	0	0.0	3	0.3
C78	Sec Resp & Dig	0	0.0	1	0.4	0	0.0	0	0.0	0	0.0	0	0.0	1	0.1
C79	Sec Others	2	0.4	0	0.0	2	0.6	0	0.0	0	0.0	0	0.0	4	0.3
C80	Unk Primary	13	2.3	5	2.2	2	0.6	0	0.0	0	0.0	0	0.0	20	1.7
C81	Hodgkin Lymphoma	4	0.7	0	0.0	1	0.3	0	0.0	0	0.0	0	0.0	5	0.4
C82-85	N.H. Lymphoma	15	2.7	3	1.3	6	1.7	1	3.2	1	8.3	1	25.0	27	2.3
C90	Multiple Myeloma	3	0.5	1	0.4	3	0.8	0	0.0	0	0.0	0	0.0	7	0.6
C91	Lymphoid Leukemia	7	1.3	9	4.0	5	1.4	0	0.0	0	0.0	0	0.0	21	1.8
C92	Myeloid Leukemia	12	2.2	3	1.3	8	2.2	2	6.5	2	16.7	0	0.0	27	2.3
C93-95	Other Leukemia	3	0.5	3	1.3	0	0.0	2	6.5	0	0.0	0	0.0	8	0.7
Total	All Site	557	100.0	225	100.0	358	100.0	31	100.0	12	100.0	4	100.0	1187	100.0

Table 19: Number of incidence cases of Cancer by Primary Histology (ICDO-3) and Sex with Percentages, 2005-2009, Aurangabad

ICD-O-3	HISTOLOGY	Male		Female		Total	
		#	%	#	%	#	%
800	Malignant Neoplasms, NOS	139	12.1	96	8.1	235	10.1
8001-80	05 Malignant Tumors	32	2.8	15	1.3	47	2.0
801-804	Malignant Epithelial Neoplasms	14	1.2	12	1.0	26	1.1
805-808	Squamous Cell Neoplasms	491	42.9	431	36.3	922	39.5
809-811	Basal Cell Neoplasms	0	0.0	3	0.3	3	0.1
812-813	Transitional Cell Carcinomas	19	1.7	9	0.8	28	1.2
814-838	Adenocarcinomas	182	15.9	163	13.7	345	14.8
839-842	Skin Appendage Neoplasms	0	0.0	2	0.2	2	0.1
844-849	Cystic, Mucinous & Serous Neoplasms	7	0.6	5	0.4	12	0.5
850-854	Ductal & Lobular Neoplasms	5	0.4	299	25.2	304	13.0
858	Thymic Epithelial Neoplasms	1	0.1	0	0.0	1	0.0
868-871	Paraganliomas & Glomus Tumors	1	0.1	0	0.0	1	0.0
872-879	Nevi & Melanomas	6	0.5	5	0.4	11	0.5
880	Soft Tissue Tumors & Sarcomas	18	1.6	12	1.0	30	1.3
881-883	Fibromatous Neoplasms	0	0.0	3	0.3	3	0.1
885-888	Lipomatous Neoplasms	0	0.0	1	0.1	1	0.0
889-899	Complex mixed and stromal Neoplasms	3	0.3	5	0.4	8	0.3
900-903	Fibroepithelial Neoplasms	0	0.0	1	0.1	1	0.0
906-909	Germ Cell Tumors	11	1.0	1	0.1	12	0.5
910	Triploblastic Neoplasms	0	0.0	4	0.3	4	0.2
918-924	Osseous and Chondromatous Neoplasms	10	0.9	3	0.3	13	0.6
925	Germ Cell Tumors	1	0.1	0	0.0	1	0.0
926	Miscellaneous Tumors	4	0.3	2	0.2	6	0.3
935-937	Miscellaneous bone Tumors	2	0.2	0	0.0	2	0.1
938-948	Gliomas	36	3.1	18	1.5	54	2.3
949-952	Neroepitheliomatous Neoplasms	1	0.1	2	0.2	3	0.1
953	Meningiomas	1	0.1	0	0.0	1	0.0
959	Malignant Lymphomas, NOS or Diffus	50	4.4	26	2.2	76	3.3
965-966	Hodgkins Lymphoma	13	1.1	5	0.4	18	0.8
967-972	Non Hodgkins Lymphoma	3	0.3	1	0.1	4	0.2
973	Plasma Cell Tumors	6	0.5	7	0.6	13	0.6
980-994	Leukemias	89	7.8	55	4.6	144	6.2
998	Myeloydplastic Syndromes	0	0.0	1	0.1	1	0.0
Total	All Sites	1145	100.0	1187	100.0	2332	100.0

Publications:

I. Research Papers:	
1.	Cancer Incidence in Greater Bombay: Assessment of cancer risk by age. Jussawalla DJ, Haenszel W, Deshpande VA and Natekar MV, British Journal of Cancer, 22, 623-636, 1968.
2.	Histological typing of cancer in Greater Bombay: An analysis of the community and the total countries, Jussawalla DJ, Deshpande VA, and Pai AN, Indian Journal of Cancer, 7, 1-13, 1970.
3.	Differences observed in the site incidence of cancer between the Parsi community and the total population of Greater Bombay: A critical Appraisal. Jussawalla DJ, Deshpande VA, Haenszel W, and Natekar MV, British Journal of Cancer, 24, 56-66, 1970.
4.	Assessment of risk patterns in cancer of the cervix: A comparison between Greater Bombay and Western Countries. Jussawalla DJ, Deshpande VA, and Standfast SJ, International Journal of Cancer, 7, 259-268, 1971.
5.	Evaluation of cancer risk in tobacco chewers and smokers: An epidemiologic assessment. Jussawalla DJ and Deshpande Va, Cancer, 28, 244-252, 1971.
6.	Epidemiology of oesophageal cancer: Special report of the International seminar, Jussawalla D, International Journal of Caner, 10, 436-441, 1972.
7.	Cancer Incidence Patterns in the subcontinent of India, Jussawalla DJ, Proceedings of the Royal Society of Medicine, 66, 308-312, 1973.
8.	Establishment of Cancer registration system in India, Jussawalla DJ, The Indian Journal of Cancer, 10, 125-27, 1973.
9.	Objectives, Planning, and Utility of Population Based Cancer Registries, Jussawalla DJ, Indian Academy of Medical Sciences, 10, 103-109, 1974.
10.	Public education in Cancer, Jussawalla DJ, Excerpta Medical, International Congress Series No.352, Bol.4, 1974.
11.	The persistence of difference in cancer incidence at various anatomical sites 1300 years after immigrations , A Study of the parsi community in India: Recent results in cancer research 50, 170-181, 1975.
12.	Cancer incidence in Greater Bombay, (1964-1972): A Comparative Study, Jussawalla DJ, Yeole BB and Natekar MV, Indian Journal of Cancer, 12, 135-143, 1975.
13.	Epidemiology of breast cancer in India, Jussawalla DJ, Yeole BB and Natekar MV, Indian Journal of Cancer, 12, 231-242, 1975.
14.	Cancer Registry is as an essential pre-requisite to cancer control, Jain DK, Indian Journal of Cancer, 12, 263-268, 1975.
15.	Epidemiology of breast cancer in Greater Bombay, Jussawalla DJ, Jain DK, In proceedings of the Second Asian Cancer Conference, Singapore, 203-212,1976.
16.	The problems of cervical and mammary cancer in India, Jussawalla DJ, and Jain DK, Indian Academy of Medical Science, 12,1-12,1976.
17.	Breast Cancer and religion and Greater Bombay: An epidemiological study of 2,130 women over a 9-year period, Jussawalla DJ,, Jain DK, British Journal of Cancer, 36, 634-638,1977.
18.	Lung Cancer in Greater Bombay: Correlations with religion and smoking habits, Jussawalla DJ, and Jain DK, British Journal of Cancer, 40, 437-447,1979.
19.	Cancer in the Sindhi Populations of Greater Bombay, Jussawalla DJ,, Yeole BB, Natekar MV and Rajgopalan TR, Cancer, Vol.46, 2107-2115, 1980.

20.	Difference in site patterns of cancer in Sindhi and Parshi sub-groups and General populations of Greater Bombay, Jussawalla DJ, Yeole BB, Natekar MV, Rajgopalan TR, Indian Journal of Cancer, 17, 78-88, 1980.
21.	Population base cancer registry: Need an importance to the community, Jussawalla DJ, and Yeole BB, Indian Journal of Cancer, Vol.17, 146-148, 1980.
22.	Geographical variations in cancer incidence in two urban populations in India, Jussawalla DJ, Yeole BB, Natekar MV, and Rajgopalan TR, Indian Journal of Cancer, 80, 91-88, 1981.
23.	Resources necessary for the efficient operation of Population based cancer registry. Jussawalla DJ, Yeole BB, Indian Journal of Cancer, 18, 171-175, 1981.
24.	Histological and epidemiological features of breast cancer in different religious groups in Greater Bombay, Jussawalla DJ, Yeole BB, Natekar MV, Journal of Surgical Oncology, 18, 269-279, 1981.
25.	Oesophageal Cancer in India, Jussawalla DJ, Journal of Cancer Research and Clinical Oncology, 99, 29-33, 1981.
26.	An Assessment of Cancer mortality in Greater Bombay, Jussawalla DJ, Yeole BB, Natekar MV, Indian Journal of Medical Research, New Delhi, 75, 68-82, 1982.
27.	Benign and Malignant ovarian tumors in a general hospital material from Greater Bombay, Doctor VM, Simha MR, Yeole BB, Natekar MV, and Jussawalla DJ. International Survey of Distribution of Histologic types of tumors of testis and ovary. UICC Technical Report Series, Geneva, 75, 281-290, 1983.
28.	Ovarian Cancer in Greater Bombay, Doctor VM, Sampat MB, Talwalkar GV, Yeole BB, Simha MR, Natekar MV, and Jussawalla DJ. International Survey of Distributions of Histologic Types of Tumors of Testis and Ovary. UICC Technical Report Series, Geneva, 75, 173-184, 1983.
29.	Epidemiology and Etiology of cancer of cervix in Greater Bombay, Jussawalla DJ, Yeole BB, Journal of Surgical Oncology, New York, 26, 53-62, 1984.
30.	Cancer Incidence in Aurangabad City, Jussawalla DJ, Sathe PV, Yeole BB, Natekar MV, Indian Journal of Cancer, Bombay, 21, 55-62, 1984.
31.	Population Based Cancer Registry, Yeole BB, In Principles and Practice of Statistics in Medicine Eds. Srivastava RN, Varma BN, Shukla GD, Himalaya Publishing House, Bombay, 241-249, 1985.
32.	Cancer in Indian Muslims. Jussawalla DJ, Yeole BB, Natekar MV, Cancer, Philadelphia, 55, 1149-1158, 1985.
33.	Cancer Incidence Indian Christians, Jussawalla DJ, Yeole BB, Natekar MV, British Journal of Cancer, 51, 883-891, 1985.
34.	Establishment of Cancer Registry System in India. Jussawalla DJ, Yeole BB, In Punjab University Alumni Associations magazine, "The FU Aluminus", Chandigarh, 1985.
35.	Cancer in young adults in Greater Bombay, Jussawalla DJ, Yeole BB, Journal of Surgical Oncology, 30, 244-251, 1985.
36.	Cancers of the Upper Alimentary and Rescuratory Tracts in Bombay, India: A Study of incidence over two decades, Jayant K, and Yeole BB, British Journal of Cancer, 56, 846-848, 1987.
37.	An Epidemiological study of malignant melanoma in Greater Bombay. Jussawalla DJ, Yeole BB, Indian Journal of Cancer, Bombay, 25, 70-76, 1988.
38.	An Assessment of Reliability and Completeness of Bombay Cancer Registry Data. Yeole BB, Jussawalla DJ, Indian Journal of Cancer, Bombay, 25, 177-190, 1988.

39.	Childhood cancers in Greater Bombay, Jussawalla DJ, Yeole BB, Natekar MV, Indian Journal of Cancer, Bombay, 25, 197-206, 1988.
40.	Cancer Incidence in Indian Christians, Yeole BB : In proceedings of the third annual conference of Indian Society of Medical Statistics, Himalaya Publishing House, 92-105, 1988.
41.	Epidemiology of Breast cancer in India with special reference of the Parsi Community. In Current Perspectives in Breast Cancer. Eds. Mithra I and Desai PB. Tata McGraw Hill Publishing Co. New Delhi, 11-19, 1988.
42.	Early Detection of Breast Cancer in Developing Countries, Mitra I, Yeole BB, and Jussawalla DJ. The Lancet, London, pp, 719-720, 1989.
43.	Declining Trend in Cervical Cancer Incidence in Greater Bombay. Yeole BB, Jayant K, and Jussawalla DJ, Journal of Surgical Oncology, New York, 42, pp 262-271, 1989.
44.	High Mortality rate from breast cancer in Greater Bombay, Potential for early detection by physical examination, Mitra I, Yeole BB, and Jussawalla DJ, Journal of Cancer Detection and Prevention, New York, 1989.
45.	Incidence and Etiology of Multiple Myeloma in Greater Bombay. Indian Journal of Cancer, 27, pp 88-93, 1990.
46.	Trends in Breast Cancer Incidence in Greater Bombay. An Epidemiological Assessment . Yeole BB, Jayant K and Jussawalla DJ. Who Bulletin, Geneva, 68, pp 245-249, 1990.
47.	Geographic Differences in Cancer Incidence by Sex of Various sites in City Wards in Greater Bombay. Jussawalla DJ, Yeole BB, and Natekar MV, Indian Journal of Cancer, 27, pp 20-27, 1990
48.	Tobacco Related Cancers in Bombay, India A study of incidence over two decades. Jayant K and Yeole BB. In control of Tobacco Related Cancers and other diseases , Eds, Gupta PC, Hamner JE, Murthy PR, Bombay, pp, 139-148, 1992.
49.	Cancer Incidence and Trends in Greater Bombay. Yeole B.B. and Jassawalla DJ. European Journal of Cancer, Oxford,25, PP 1926-1928,1992.
50.	Trends in Cancers of the Upper Alimentary and Respiratory Tracts in Women in Bombay, India. Yeole BB, Jayant K, Natekar MV, and Jassawalla DJ. International Journal of Oncology,Athens,3, PP 1015-1018, 1993
51.	Is Cancer of the Uterine Cervix on the Decline in Bombay City? Notani PN and Yeole BB. Indian Journal of Cancer, Bombay, 32, PP 149-151, 1995.
52.	Descriptive Epidemiological Assessment of Cancers of the Breast, Ovary and Uterine Corpus in Greater Bombay. Yeole BB, Jassawalla DJ. Oncology Reports, Athens,4, PP 455-462, 1997.
53.	Descriptive Epidemiology of Cancers of the Male Genital Organs in Greater Bombay. Yeole BB, Jassawalla DJ, Indian Journal of Cancer, Bombay, 31, PP 30-39, 1997.
54.	Cancer in Indian in the Year 2001. An Epidemiological Study. Yeole BB, Ph.D. Dissertation, University of Tampere, Finland, 1997.
55.	Vasectomy and Prostate Cancer : A Case Control Study in India. Platz EA, Yeole BB, Vho E, Jassawalla DJ, Giovannucci E and Ascherio A. International Journal of Epidemiology, Liverpool, 26,PP 933-938, 1997.
56.	Survival from Breast and Cervix Cancer in Bombay. Yeole BB, Jassawalla DJ, Sabnis SD and Sunny Lizzy. In Survival from Cancer in Developing Countries monograph, Eds Sankaranarayan R, Black RJ, and Parkin DM. IARC, Scientific

	Publication, 145, Lyon, 1997.
57.	Descriptive Epidemiology of Urinary Organs in Greater Bombay. Yeole BB and Jassawalla DJ. Indian Journal of Medical Research, New Delhi,106, PP, 517-523, 1997.
58.	Increasing Trends in Incidence of Adeno Carcinoma of the Cervix Uteri from 1965-1985 in Bombay. Krishnamurthy S, Yeole BB and Jassawalla DJ. Journal of Obstetrics and Gynecology Research Japan. 23, PP 521-527, 1997.
59.	Descriptive Epidemiology of Lymphatic Malignancies in Greater Bombay, Yeole BB and Jassawalla DJ. Oncology Reports, Athens,5, PP 1-7, 1998.
60.	Descriptive Epidemiology of Haemiopoitic Malignancies in Greater Bombay, Yeole BB, Jussawalla DJ, Advani SH, National Medical Journal of New Delhi,11, 115-120, 1998.
61.	Descriptive Epidemiology of Bone Cancers in Greater Bombay, Yeole BB and Jassawalla DJ. In Indian Journal of Cancer, Vol.35,PP 101-106, 1998.
62.	Descriptive Epidemiology of Thyroid Cancers in Greater Bombay, Yeole BB and Jassawalla DJ, In Indian Journal of Cancer, Vol.35,PP 57-64, 1998.
63.	Long Term Survival from Uterine Cervical Cancer in Bombay. India, Yeole BB, Sankaranarayan R and Jassawalla DJ, International Journal of Cancer, 78, 394-395,1998.
64.	Attributable Causes of Survival among Leading Cancer in Greater Sites in Greater Bombay, Ramarao G, Ramanakumar AV, Yeole BB. In Proceedings of International Conference on Stochastic Processes and Their Applications at Chennai, 199, PP 50-60,1998.
65.	Bladder Cancer in Bombay, India, Yeole BB, Ostomy International, Bombay,21, PP 26-27,1999.
66.	Trends and Predictions in Cancer Incidence in Greater Bombay, Yeole BB, Indian Journal of Cancer,36, PP 167-187,1999.
67.	Cancer Mortality in Greater Bombay, BB Yeole In "Counting the Death in India in the 21 st Century". Proceedings of the International Workshop on Certification of Causes of Death, Tata Institute of Fundamental Research, Bombay,India,1999.
68.	Trends in Cancer Incidence in Greater Bombay, Yeole BB,Cancer Strategy, IARC, Lyon, France 7, PP 1-6,2000.
69.	Survival from Head and Neck Cancer in Bombay, India, Yeole BB, Sankaranarayan R, Lizzy Sunny, Swaminathan R and Parkin DM, CANCER, USA,89/2,PP 437-444,2000.
70.	Population based Survival from Colo-Rectal Cancer in Mumbai (Bombay), India. Yeole BB, Lizzy Sunny, Swaminathan R, Sankaranarayan R and Parkin DM, European Journal of Cancer, UK, 2001.
71.	An Epidemiological Features of Childhood Cancers in Greater Bombay, Yeole BB, Advani SH and Lizzy Sunny, Indian pediatrics, New Delhi, Vol 38, 1270-1277,2001.
72.	An Assessment of Cancer Incidence Patterns in parsi and Non-Parsi Population. Yeole BB, Advani SH, Kurkure AP and Lizzy Sunny, Asian Pacific Journal of Cancer Prevention, Bangkok, Vol 2,PP 293-298, 2001.
73.	An Assessment of Improvement in Reliability and Completeness of Mumbai Cancer Registry data from 1965-1997, Yeole BB, Asian Pacific Organization for Cancer Prevention, Bangkok, Vol 2, PP 225-232,2001.
74.	Epidemiological assessment of Lung Cancer in India, BB Yeole, Proceedings of NAPCON-2001. Mumbai, PP 184-188, 2001.

75.	Population based Survival from Prostate Cancer in Bombay ,India , BB Yeole and Lizzy Sunny, Indian Journal of Cancer, Bombay, India, Vol 38, 126-132, 2001.
76.	Retinoblastoma : An Epidemiological Appraisal in Reference to Mumbai Population. India. Yeole BB and Advani SH, Asian Pacific Journal for Cancer Prevention, Bangkok, Vol. 13, PP 17-22, 2002.
77.	Cancer in Women in India, An Epidemiological assessment, BB Yeole. Published in Asian Pacific Journal for Cancer Prevention, Bangkok, Vol 3, PP 137-142, 2002.
78.	An Epidemiological Assessment of Increasing Incidence and Trends in Breast Cancer in Mumbai- India, during last Two Decades. BB Yeole, AP Kurkure, Published in Asian Pacific Journal for Cancer Prevention, Bangkok, Vol 14, PP 51-56,2003.
79.	Survival from Glottic and Supraglottic Laryngeal Carcinoma in Mumbai (Bombay), India BB Yeole,, R Sankarnarayan, and AV Ramanakumar. Oral Oncology, Vol..9, PP 659-663,2003.
80.	Survival from Oral Cancers in Mumbai (Bombay), India. BB Yeole, AV Ramanakumar and R Sankarnarayan. 'Cancer Cause and Control', Vol.14 , PP 945-952,2003.'
81.	Population base survival from Cancers having a Poor Prognosis in Mumbai (Bombay), India. BB Yeole, AV kumar. Asian Pacific J Cancer Prev,5,175-182,2004.
82.	Decreasing trend in the Incidence of Stomach Cancer in Mumbai, India, during 1988 to 1999. Lizzy Sunny, Yeole BB, Shiri R, Mathews S, Falah Hassani K, Advani SH, Asian Pacific J Cancer Prev,5 (2), 169-174,2004.
83.	Oral Cancer in Mumbai, India: A Fifteen Year perspective with Respect to Incidence Trends and Cumulative Ris. Lizzy Sunny, Yeole BB, Hakama M, Shiri R, PSRK Sastri, Mathews S, Advani SH, Asian Pacific J Cancer Prev,5 (3), 294-300,2004.
84.	Population-based Survival from Cancer of Breast, Cervix and Ovary in Women in Mumbai, India. BB Yeole, VR Kumar, Arun Kurkure, Lizzy Sunny. Asian Pacific J Cancer Prev,5 (3), 308-315, 2004.
85.	Cumulative Risk and Trends in Prostate Cancer Incidence in Mumbai, India, 1986 to 2000. Lizzy Sunny, Yeole BB, Hakama M, Kurkure AP , Mathews S, Shastri NG, Advani SH, Asian Pacific J Cancer Prev,5 (4), 401-405,2004.
86.	Coping Mechanism among Long- Terms survivors of Breast And Cervical Cancer in Mumbai, India. Agnihotram V, Ramanakumar, Yeole BB, Garimella ramarao, Asian Pacific J Cancer Prevention, Vol.6, 189-194,2005.
87.	Assessing Cancer Burden in Rural India: An Analysis by Cause of Death Statistics, AV Ramanakumar, BB Yeole, Asian Pacific J Cancer Prevention, Vol.6, 221-223,2005.
88.	An Epidemiology of Cancer in Particular Reference to India, BB Yeole. In : CANCER – A Cytogenetic and Molecular Approach. Bioved Research Society, Allahabad, India,31 –55,2005.
89.	Respiratory Cancer – Population Based Survival in Mumbai, India, BB Yeole, Asian Pacific Journal of Cancer Prevention, Vol.6, 449-454, 2005.
90.	Social Inequalities in Cancer with special reference to South Countries, AP Kurkure, BB Yeole, Asian Pacific Journal of Cancer Prevention, Vol7, 36-40, 2006.
91.	Epidemiological Assessment of Lung Cancer in India, BB Yeole, and AP Kurkure.

	In the Oncology Knowledge Bank; Lung Cancer, Vol.2006, 9-18, Mumbai, India, 2006.
92	Social inequalities in Cancer, AP Kurkure & BB Yeole. In Cancer Awareness, Prevention and Control : Strategies for South Asia, 29-39, UICC, Geneva, 2006.
93	Geographic Variation in Cancer Incidence and its Patterns in Urban Maharashtra, 2001. AP Kurkure, BB Yeole, and SS Koyande. Asian Pacific Journal of Cancer Prevention. Vol. 7, 385-390, 2006.
94	Role of Cancer Registries in Determining in Cancer Mortality in Asia. BB Yeole, Asian Pacific Journal of Cancer Prevention. Vol.7, 469-471, 2006.
95	Role of the cancer registries in determining cancer mortality in Asia, BB Yeole, Radiology And Oncology, 41(4), 211-214, 2007.
96	Cancer Incidence in Indians from Three Areas: Delhi and Mumbai, India, and British Columbia, Canada, Thomas Gregory Hislop, Chris D, Bajdik, Sita Ram Saroa, BB Yeole, Maroa Cristina Barrocetavena, J Immigrant Minority Health, 9, 221-227, 2007.
97	Trends in Cancer Incidence in Head and Neck Cancers in India, BB Yeole, Asian Pacific Journal of Cancer Prevention., Vol. 8, No 4, pp 607-612, 2008.
98	Trends in Brain Cancer Incidence in India, BB Yeole, Asian Pacific Journal of Cancer Prevention., Vol. 9, No 2, pp. 267-270, 2008.
99	Trends in Cancer Incidence in Female Breast, Cervix Uteri, Corpus Uteri, and Ovary in India, BB Yeole, APOJCP, Vol 9, No 1, pp 119-122, 2008.
100	Trends in the Prostate Cancer in India, BB Yeole. APOJCP, Vol.9, No 1, pp 141-144, 2008.
101	Trends in Cancer Incidence in Esophagus, Stomach, Colon, Rectum, and Liver in Males in India, BB Yeole, APOJCP, Vol9, No 1, pp 97-100, 2008.
102	Geriatric Cancers in India: An Epidemiological and Demographic Overview , BB Yeole. AP Kurkure, SS Koyande, APOJCP, Vol. 9, No 2, pp.271-274, 2008.
103	Trends in Incidence in Non Hodgkin's Lymphoma in India, BB Yeole, APOJCP, Vol 9, No 3, pp 433-436, 2008
104	An Epidemiological Assessment of Colorectal Cancers with special reference to India. Yeole BB, JCD, Vol-23, pp 29-33, 2008.

II.	Monographs :
1.	Cancer in Greater Bombay, 1964, Jussawalla DJ, Deshpande VA, Natekar MV, Bombay Cancer Registry, Indian Cancer Society, Mumbai, 1966.
2.	Cancer in Greater Bombay, 1964-66, , Jussawalla DJ, Deshpande VA, Natekar MV, Bombay Cancer Registry, Indian Cancer Society, Mumbai, 1966.
3.	Oesophageal Cancer- Monograph. Edited by Jussawalla DJ, Sir Richard Doll, UICC, Bangalore, India, 1971.
4.	Cancer in Greater Bombay, 1967-69, Jussawalla DJ, Yeole BB, Natekar MV, Bombay Cancer Registry, Indian Cancer Society, Mumbai, 1973.
5.	Cancer in Greater Bombay, 1970-72, Jussawalla DJ, Jain DK, Yeole BB, Natekar MV, Bombay Cancer Registry, Indian Cancer Society, Mumbai, 1976.
6.	Cancer Incidence in Poona City agglomeration 1972-74, Jussawalla DJ, Yeole BB, Sathe PB, Natekar MV, Bombay Cancer Registry, Indian Cancer Society, Mumbai, 1979.
7.	Trends in Cancer Incidence 1964-72, Jussawalla DJ, Jain DK, Yeole BB, Natekar MV, Rajgopalan TR, Bombay Cancer Registry, Indian Cancer Society, Mumbai, 1980.
8.	Cancer Incidence in Greater Bombay 1973-75, Jussawalla DJ, Jain DK, Yeole BB, Natekar MV, Bombay Cancer Registry, Indian Cancer Society, Mumbai, 1980.
9.	Cancer Morbidity and Mortality in Poona city agglomeration, 1975-77, Jussawalla DJ, Shahu U, Yeole BB and Natekar MV, Bombay Cancer Registry, Indian Cancer Society, 1979.
10.	Cancer Morbidity and Mortality in Pune city agglomeration, 1978-80, Jussawalla DJ, Shahu U, Yeole BB and Natekar MV, 1983.
11.	Cancer Morbidity and Mortality in Pune city agglomeration, 1978-80, Jussawalla DJ, Shahu U, Yeole BB and Natekar MV, 1983.
12.	Cancer Incidence in Greater Bombay (By Religion and Sex), 1973-78, Jussawalla DJ, Yeole BB and Natekar MV, 1984.
13.	Cancer Incidence in Aurangabad City, 1978-1980, Jussawalla DJ, Sathe PV, Yeole BB and Natekar MV, 1984.
14.	Cancer Morbidity and Mortality in Greater Bombay, 1983. Jussawalla DJ, Yeole BB and Natekar MV, 1984.
15.	Cancer Morbidity and Mortality in Greater Bombay, 1984. Jussawalla DJ, Yeole BB and Natekar MV, 1986.
16.	Cancer Morbidity and Mortality in Greater Bombay, 1985. Jussawalla DJ, Yeole BB and Natekar MV, 1987.
17.	Cancer Morbidity and Mortality in Nagpur City, 1980-84. Jussawalla DJ, Deshmukh NK, Gandhe ML, Yeole BB and Natekar MV, 1987.
18.	Cancer Morbidity and Mortality in Pune city, 1981-85. Jussawalla DJ, Natu M, Yeole BB and Natekar MV, 1988.
19.	Cancer Incidence in Greater Bombay by Age, Sex and Ward, 1979-84. Jussawalla DJ, Yeole BB and Natekar MV, 1988.
20.	Cancer Morbidity and Mortality in Greater Bombay, 1986-87. Jussawalla DJ, Yeole BB and Natekar MV, 1989.
21.	Cancer Morbidity and Mortality in Greater Bombay, 1988. Jussawalla DJ, Yeole BB and Natekar MV, 1990.
22.	Cancer Morbidity and Mortality in Greater Bombay, 1989. Jussawalla DJ, Yeole BB and Natekar MV, 1991.

23.	Cancer Morbidity and Mortality in Nagpur City, 1985-89. Jussawalla DJ, Yeole BB, Deshmukh NK, Natekar MV and Bapat GM, 1991.
24.	Cancer Morbidity and Mortality in Greater Bombay, 1990. Jussawalla DJ, Yeole BB and Natekar MV, 1992.
25.	Cancer Morbidity and Mortality in Pune City, 1986-90. Jussawalla DJ, Natu M, Yeole BB and Natekar MV, 1993.
26.	Cancer Morbidity and Mortality in Greater Bombay, 1991. Jussawalla DJ, Yeole BB and Natekar MV, 1993.
27.	Cancer Morbidity and Mortality in Greater Bombay, 1992. Jussawalla DJ, Yeole BB, Natekar MV and Lizzy Sunny, 1995.
28.	Cancer Morbidity and Mortality in Greater Bombay, 1993. Jussawalla DJ, Yeole BB, Natekar MV and Lizzy Sunny, 1995.
29.	Cancer Morbidity and Mortality in Greater Bombay, 1994. Jussawalla DJ, Yeole BB, Natekar MV and Lizzy Sunny, 1997.
30.	Cancer Morbidity and Mortality in Greater Bombay, 1995. Jussawalla DJ, Yeole BB and Lizzy Sunny, 1998.
31.	Cancer Morbidity and Mortality in Pune City, 1991-95. Jussawalla DJ, Yeole BB, Pratinidhi AK and Lizzy Sunny, 1998.
32.	Cancer Morbidity and Mortality in Nagpur City, 1990-94. Jussawalla DJ, Yeole BB, Deshmukh NK and Lizzy Sunny, 1998.
33.	Cancer Morbidity and Mortality in Greater Bombay, 1996. Jussawalla DJ, Yeole BB and Lizzy Sunny, 1999.
34.	Cancer Morbidity and Mortality in Greater Bombay, 1997. Jussawalla DJ, Yeole BB and Lizzy Sunny, 2001.
35.	Cancer Morbidity and Mortality in Greater Bombay, 1998. Kavarana NM, Kamat MR, Kurkure AP, Yeole BB and Lizzy Sunny, 2001.
36.	Cancer Morbidity and Mortality in Greater Bombay, 1999. Kavarana NM, Kamat MR, Kurkure AP, Yeole BB and Methar SK, 2001.
37.	Cancer Morbidity and Mortality in Pune City, 1996-2000 Kavarana NM, Kamat MR, Kurkure AP, Yeole BB, Pratinidhi AK, Koppikar CB, Sunny Lizzy and Kavita CJ, 2003.
38.	Cancer Morbidity and Mortality in Nagpur City, 1995-99. Kavarana NM, Kamat MR, Kurkure AP, Yeole BB, Varsha S, Sunny Lizzy and Kavita CJ, 2003.
39.	Cancer Morbidity and Mortality in Greater Bombay, 2000. Kavarana NM, Kamat MR, Kurkure AP, Yeole BB and Lizzy Sunny, 2003.
40.	Cancer Morbidity and Mortality in Greater Bombay, 2001. Kurkure AP, Yeole BB, Sunny Lizzy and Koyande SS, 2005.
41.	Cancer Incidence Patterns in Urban Maharashtra, 2001. Kurkure AP, Yeole BB, and Koyande SS, 2005.
42.	Cancer Incidence in Aurangabad City Agglomeration 1995-2004, Kurkure AP, Yeole BB, Shewalkar BK, Koyande SS, and Shastri NG, 2006
43.	Cancer Incidence and Mortality in Greater Bombay, 2002-04. Kurkure AP, Yeole BB and Koyande SS, 2008
44.	Cancer Incidence and Mortality in Poona City, 1991-2005 Kurkure AP, Yeole BB, JK Joshi, SS Jawdekar Koyande SS, KC Jadhav and RP Vagal , 2008.
45.	Cancer Incidence and Mortality in Nagpur City, 2000-2004, Kurkure AP, Yeole BB, Sagdeo Varsha, Koyande SS, Bandekar PP and Khandekar MV, 2008.
46.	Cancer Incidence and Mortality in Greater Bombay, 2005. Kurkure AP, Yeole BB and Koyande SS, 2009

47	Cancer Incidence and Mortality in Greater Bombay, 2006. Kurkure AP, Yeole BB and Koyande SS, 2009
48	Cancer Incidence and Mortality in Greater Bombay, 2007. Kurkure AP, and Koyande SS, 2012.
49	Cancer Incidence and Mortality in Greater Bombay, 2008. Kurkure AP, Koyande SS, and Thorat VR, 2012
50	Cancer Incidence and Mortality in Greater Bombay, 2009. Kurkure AP, Koyande SS, and Thorat VR, 2012
51	Cancer Morbidity and Mortality in Nagpur City, 2005-2009. Kurkure AP, Kamble KM, Koyande SS, Thorat VR, and Phadke AV, 2012.
52	Cancer Morbidity and Mortality in Aurangabad City, 2005-2009. Kurkure AP, Shewalkar BK, Koyande SS, Thorat VR, and Phadke AV, 2012.